

Rabbit IL-22 Protein, Ultra Low Endotoxin

Cat. No. IL2-OM122-UL

Description

Source	Recombinant Rabbit IL-22 Protein is expressed from HEK293 with His tag at the C-terminus. It contains Leu34-Ser187.
Accession	G1SFV3
Molecular Weight	The protein has a predicted MW of 19.2 kDa. Due to glycosylation, the protein migrates to 35-45 kDa based on Tris-Bis PAGE result.
Endotoxin	Less than 0.01 EU per µg by the LAL method.
Purity	> 95% as determined by Bis-Tris PAGE > 95% as determined by HPLC

Formulation and Storage

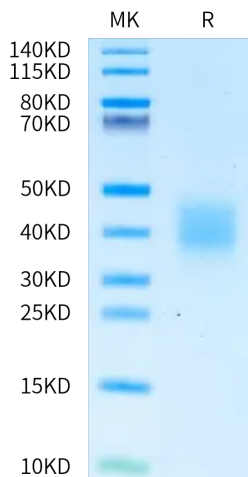
Formulation	Lyophilized from 0.22 µm filtered solution in PBS (pH 7.4). Normally 8% trehalose is added as protectant before lyophilization.
Reconstitution	Dissolve the lyophilized protein in distilled water. Please refer to the Certificate of Analysis for detailed instructions.
Storage	-20 to -80°C for 12 months as supplied from date of receipt. -80°C for 3 months after reconstitution. Recommend to aliquot the protein into smaller quantities for optimal storage. Please minimize freeze-thaw cycles.

Background

The cytokine interleukin-22 (IL-22) is a critical regulator of epithelial homeostasis. It has been implicated in multiple aspects of epithelial barrier function, including regulation of epithelial cell growth and permeability, production of mucus and antimicrobial proteins (AMPs), and complement production.

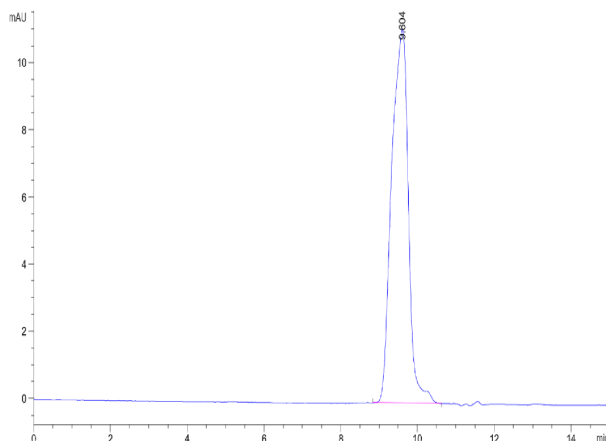
Assay Data

Bis-Tris PAGE



Rabbit IL-22 on Bis-Tris PAGE under reduced condition. The purity is greater than 95%.

SEC-HPLC



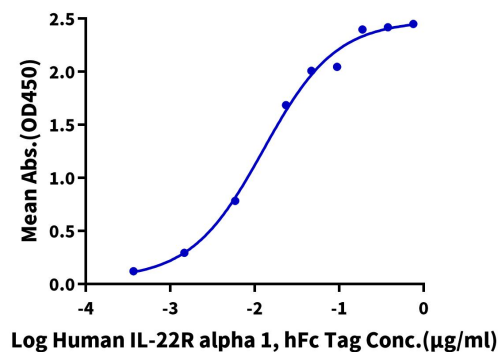
The purity of Rabbit IL-22 is greater than 95% as determined by SEC-HPLC.

Assay Data

ELISA Data

Rabbit IL-22, His Tag ELISA

0.1µg Rabbit IL-22, His Tag Per Well



Immobilized Rabbit IL-22, His Tag at 1µg/ml (100µl/well) on the plate. Dose response curve for Human IL-22R alpha 1, hFc Tag with the EC50 of 12.6ng/ml determined by ELISA.