

Sus scrofa IL-22 Protein, Ultra Low Endotoxin



Cat. No. IL2-SM122-UL

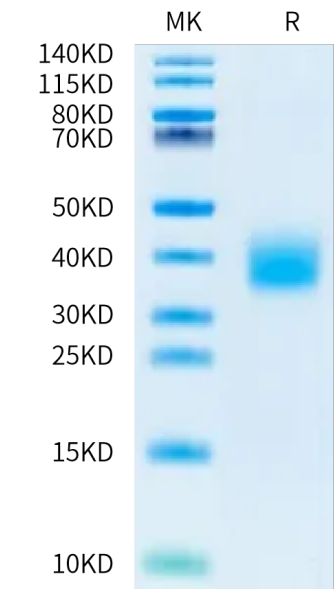
Description	
Source	Recombinant Sus scrofa IL-22 Protein is expressed from HEK293 with His tag at the C-terminus. It contains Val34-Asn190.
Accession	F1SH68
Molecular Weight	The protein has a predicted MW of 19.77 kDa. Due to glycosylation, the protein migrates to 35-45 kDa based on Tris-Bis PAGE result.
Endotoxin	Less than 0.01 EU per µg by the LAL method.
Purity	> 95% as determined by Bis-Tris PAGE > 95% as determined by HPLC

Formulation and Storage	
Formulation	Lyophilized from 0.22 µm filtered solution in PBS (pH 7.4). Normally 8% trehalose is added as protectant before lyophilization.
Reconstitution	Dissolve the lyophilized protein in distilled water. Please refer to the Certificate of Analysis for detailed instructions.
Storage	-20 to -80°C for 12 months as supplied from date of receipt.-80°C for 3 months after reconstitution.Recommend to aliquot the protein into smaller quantities for optimal storage. Please minimize freeze-thaw cycles.

Background	
The cytokine interleukin-22 (IL-22) is a critical regulator of epithelial homeostasis. It has been implicated in multiple aspects of epithelial barrier function, including regulation of epithelial cell growth and permeability, production of mucus and antimicrobial proteins (AMPs), and complement production.	

Assay Data

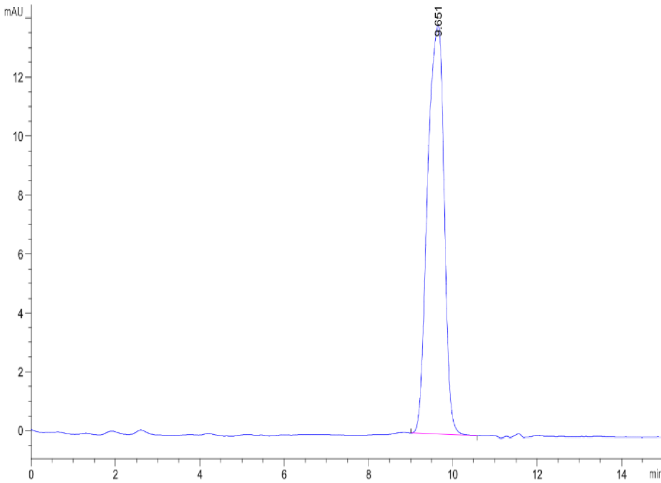
Bis-Tris PAGE



Sus scrofa IL-22 on Bis-Tris PAGE under reduced condition. The purity is greater than 95%.

SEC-HPLC

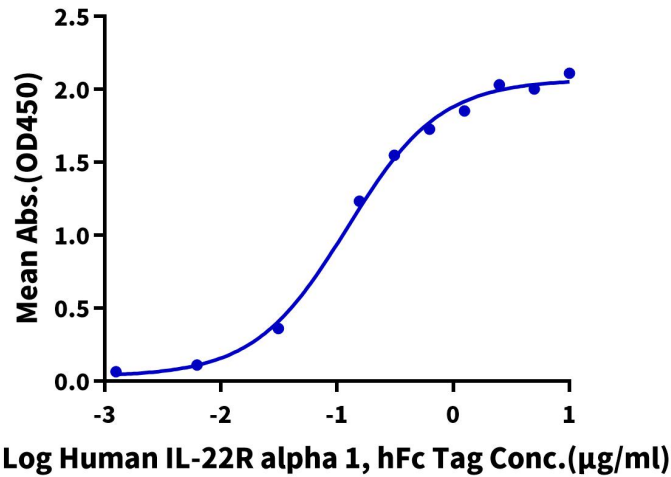
Assay Data



The purity of Sus scrofa IL-22 is greater than 95% as determined by SEC-HPLC.

ELISA Data

Sus scrofa IL-22, His Tag ELISA
0.2µg Sus scrofa IL-22, His Tag Per Well



Immobilized Sus scrofa IL-22, His Tag at 2µg/ml (100µl/well) on the plate. Dose response curve for Human IL-22R alpha 1, hFc Tag with the EC50 of 0.12µg/ml determined by ELISA (QC Test).