

Cynomolgus IL-6 Protein

Cat. No. IL6-CM001



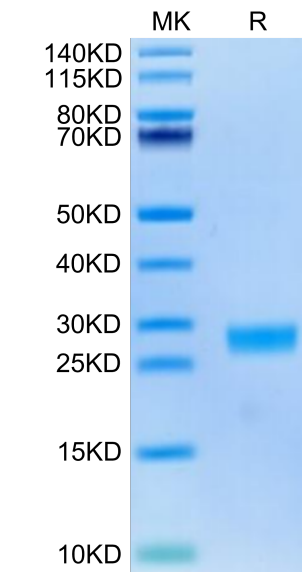
Description	
Source	Recombinant Cynomolgus IL-6 Protein is expressed from HEK293 with His tag at the C-Terminus. It contains Ala28-Met212.
Accession	P79341
Molecular Weight	The protein has a predicted MW of 22.06 kDa. Due to glycosylation, the protein migrates to 25-30 kDa based on Bis-Tris PAGE result.
Endotoxin	Less than 1EU per µg by the LAL method.
Purity	> 95% as determined by Bis-Tris PAGE > 95% as determined by HPLC

Formulation and Storage	
Formulation	Lyophilized from 0.22µm filtered solution in PBS (pH 7.4). Normally 8% trehalose is added as protectant before lyophilization.
Reconstitution	Centrifuge the tube before opening. Reconstituting to a concentration more than 100 µg/ml is recommended. Dissolve the lyophilized protein in distilled water.
Storage	-20 to -80°C for 12 months as supplied from date of receipt.-80°C for 3-6 months after reconstitution.2-8°C for 2-7 days after reconstitution.Recommend to aliquot the protein into smaller quantities for optimal storage. Please minimize freeze-thaw cycles.

Background	
IL-6 (Interleukin-6) is a pleiotropic cytokine that acts in the acute phase reaction, inflammation, hematopoiesis, bone metabolism, and cancer progression.Interleukin 6 has been shown to interact with interleukin-6 receptor and glycoprotein.	

Assay Data

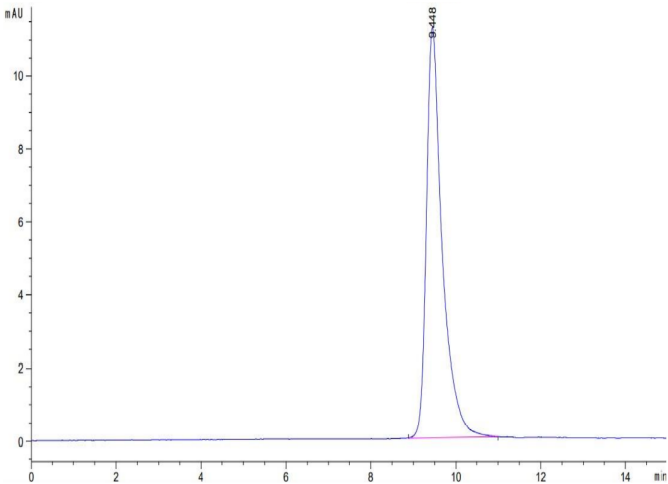
Bis-Tris PAGE



Cynomolgus IL-6 on Bis-Tris PAGE under reduced condition. The purity is greater than 95%.

SEC-HPLC

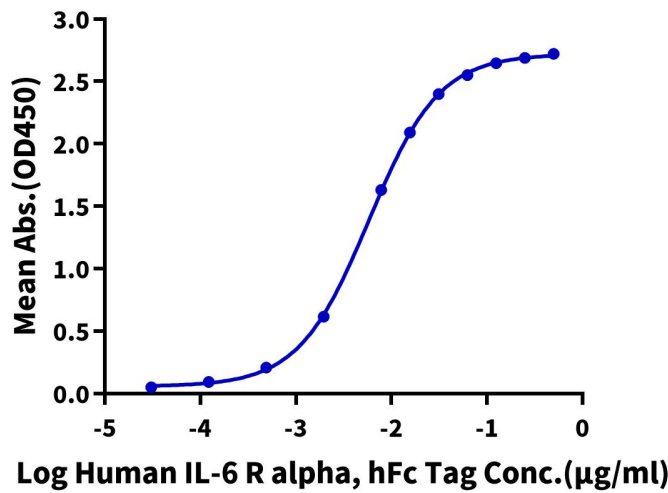
Assay Data



The purity of Cynomolgus IL-6 is greater than 95% as determined by SEC-HPLC.

ELISA Data

Cynomolgus IL-6, His Tag ELISA
0.5µg Cynomolgus IL-6, His Tag Per Well



Immobilized Cynomolgus IL-6, His Tag at 5µg/ml (100µl/well) on the plate. Dose response curve for Human IL-6 R alpha, hFc Tag with the EC50 of 5.8ng/ml determined by ELISA.