

# Biotinylated Cynomolgus IL-6 Protein

Cat. No. IL6-CM401B

## Description

<b>Source</b>	Recombinant Biotinylated Cynomolgus IL-6 Protein is expressed from HEK293 with His tag and Avi tag at the N-terminus. It contains Ala28-Met212.
<b>Accession</b>	P79341
<b>Molecular Weight</b>	The protein has a predicted MW of 23.87 kDa. Due to glycosylation, the protein migrates to 27-35 kDa based on Bis-Tris PAGE result.
<b>Endotoxin</b>	Less than 0.1EU per µg by the LAL method.
<b>Purity</b>	>95% as determined by Bis-Tris PAGE >95% as determined by HPLC

## Formulation and Storage

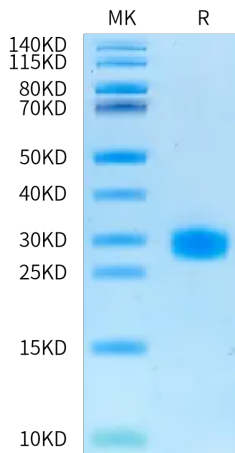
<b>Formulation</b>	Lyophilized from 0.22 µm filtered solution in PBS (pH 7.4). Normally 8% trehalose is added as protectant before lyophilization.
<b>Reconstitution</b>	Centrifuge the tube before opening. Reconstituting to a concentration more than 100 µg/ml is recommended. Dissolve the lyophilized protein in distilled water.
<b>Storage</b>	-20 to -80°C for 12 months as supplied from date of receipt. -80°C for 3 months after reconstitution. Recommend to aliquot the protein into smaller quantities for optimal storage. Please minimize freeze-thaw cycles.

## Background

IL-6 (Interleukin-6) is a pleiotropic cytokine that acts in the acute phase reaction, inflammation, hematopoiesis, bone metabolism, and cancer progression. Interleukin 6 has been shown to interact with interleukin-6 receptor and glycoprotein.

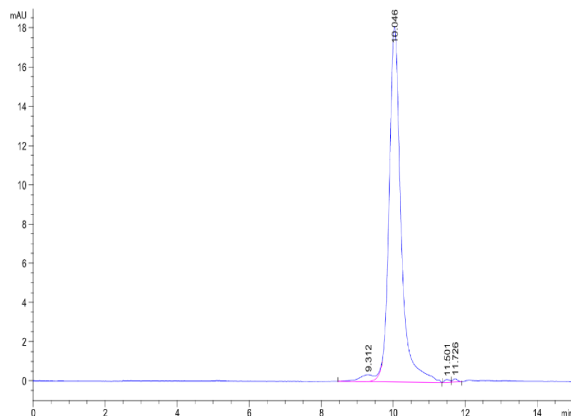
## Assay Data

### Bis-Tris PAGE



Biotinylated Cynomolgus IL-6 on Bis-Tris PAGE under reduced condition. The purity is greater than 95%.

### SEC-HPLC



The purity of Biotinylated Cynomolgus IL-6 is greater than 95% as determined by SEC-HPLC.

# Biotinylated Cynomolgus IL-6 Protein

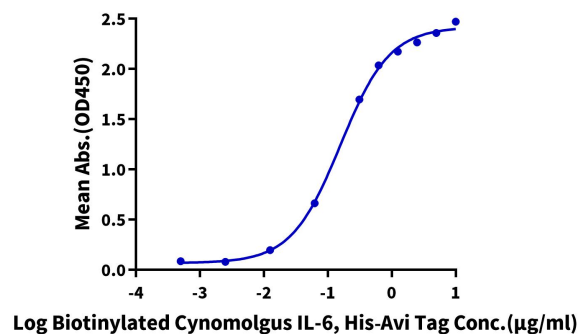
Cat. No. IL6-CM401B

## Assay Data

### ELISA Data

#### Biotinylated Cynomolgus IL-6, His-Avi Tag ELISA

0.1µg Human IL-6 R alpha, hFc Tag Per Well



Immobilized Human IL-6 R alpha, hFc Tag at 1µg/ml(100µl/well) on the plate. Dose response curve for Biotinylated Cynomolgus IL-6, His-Avi Tag with the EC50 of 0.16µg/ml determined by ELISA (QC Test).