

Human IL-6 Protein

Cat. No. IL6-HM201

Description

Source	Recombinant Human IL-6 Protein is expressed from HEK293 with hFc (IgG1) tag at the N-terminus. It contains Val30-Met212.
Accession	P05231
Molecular Weight	The protein has a predicted MW of 46.75 kDa. Due to glycosylation, the protein migrates to 52-62 kDa based on Bis-Tris PAGE result.
Endotoxin	Less than 0.1 EU per μg by the LAL method.
Purity	> 95% as determined by Bis-Tris PAGE

Formulation and Storage

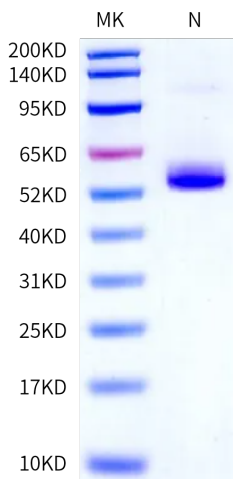
Formulation	Supplied as 0.22 μm filtered solution in PBS, 200mM L-arginine (pH 7.4).
Storage	Valid for 12 months from date of receipt when stored at -80°C . Recommend to aliquot the protein into smaller quantities for optimal storage. Please minimize freeze-thaw cycles.

Background

IL-6 (Interleukin-6) is a pleiotropic cytokine that acts in the acute phase reaction, inflammation, hematopoiesis, bone metabolism, and cancer progression. Interleukin 6 has been shown to interact with interleukin-6 receptor and glycoprotein.

Assay Data

Bis-Tris PAGE

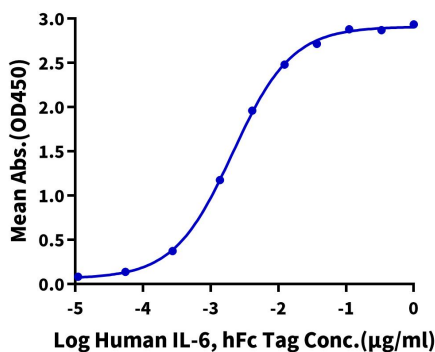


Human IL-6 on Bis-Tris PAGE under reduced condition. The purity is greater than 95%.

ELISA Data

Human IL-6, hFc Tag ELISA

0.1 μg Human IL-6 R alpha, His Tag Per Well



Immobilized Human IL-6 R alpha, His Tag (Cat. ILR-HM16R) at 1 $\mu\text{g}/\text{ml}$ (100 $\mu\text{l}/\text{well}$) on the plate. Dose response curve for Human IL-6, hFc Tag with the EC50 of 2.1ng/ml determined by ELISA.