

# Rhesus macaque IL-18 R1/CD218a Protein, Ultra Low Endotoxin



Cat. No. IL8-RM2R1-UL

## Description

Source	Recombinant Rhesus macaque IL-18 R1/CD218a Protein is expressed from HEK293 with hFc tag at the C-terminus.
	It contains Cys22-Gly329.
Accession	F7H8F9
Molecular Weight	The protein has a predicted MW of 61.96 kDa. Due to glycosylation, the protein migrates to 75-95 kDa based on Bis-Tris PAGE result.
Endotoxin	Less than 0.01 EU per µg by the LAL method.
Purity	> 95% as determined by Bis-Tris PAGE
	> 95% as determined by HPLC

## Formulation and Storage

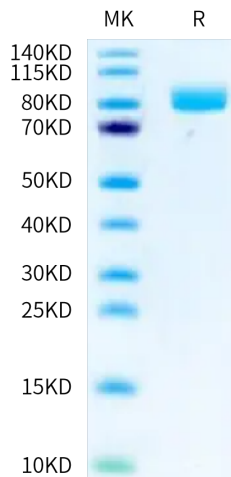
Formulation	Lyophilized from 0.22 µm filtered solution in PBS (pH 7.4). Normally 8% trehalose is added as protectant before lyophilization.
Reconstitution	Dissolve the lyophilized protein in distilled water. Please refer to the Certificate of Analysis for detailed instructions.
Storage	-20 to -80°C for 12 months as supplied from date of receipt. -80°C for 3 months after reconstitution. Recommend to aliquot the protein into smaller quantities for optimal storage. Please minimize freeze-thaw cycles.

## Background

Interleukin-18 (IL-18) is a member of the interleukin-1 family of cytokines produced constitutively by different cell types and by adipose tissue. Interleukin (IL)-18 was originally discovered as a factor that enhanced IFN-γ production from anti-CD3-stimulated Th1 cells, especially in the presence of IL-12. Upon stimulation with Ag plus IL-12, naïve T cells develop into IL-18 receptor (IL-18R) expressing Th1 cells, which increase IFN-γ production in response to IL-18 stimulation.

## Assay Data

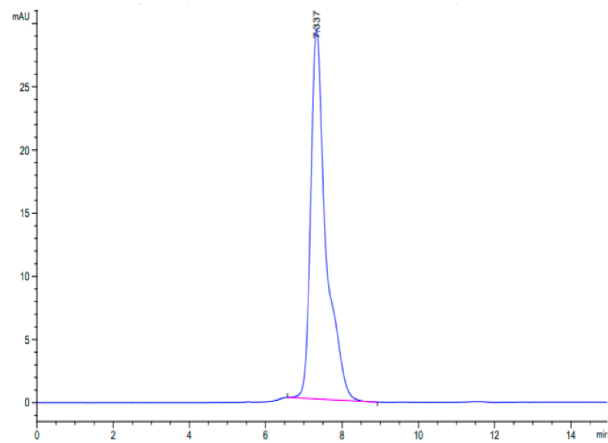
### Bis-Tris PAGE



Rhesus macaque IL-18 R1 on Bis-Tris PAGE under reduced condition. The purity is greater than 95%.

### SEC-HPLC

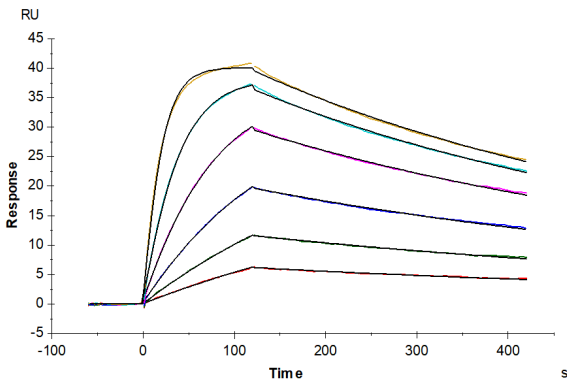
Assay Data



The purity of Rhesus macaque IL-18 R1 is greater than 95% as determined by SEC-HPLC.

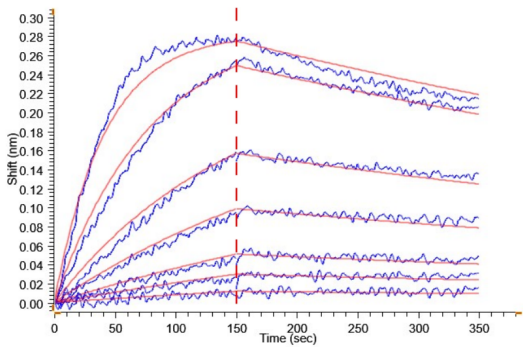
Assay Data

SPR Data



Rhesus macaque IL-18 R1, hFc Tag captured on CM5 Chip via Protein A can bind Human IL-18, No Tag with an affinity constant of 0.71 nM as determined in SPR assay (Biacore T200) (QC Test).

BLI Data



Loaded Rhesus macaque IL-18 R1, hFc Tag on ProA-Biosensor, can bind Human IL-18, No Tag with an affinity constant of 2.01 nM as determined in BLI assay (Gator).