

Rhesus macaque IL-18 R1/CD218a Protein

Cat. No. IL8-RM2R1

Description

| | |
|-------------------------|--|
| Source | Recombinant Rhesus macaque IL-18 R1/CD218a Protein is expressed from HEK293 with hFc tag at the C-terminus. It contains Cys22-Gly329. |
| Accession | F7H8F9 |
| Molecular Weight | The protein has a predicted MW of 61.96 kDa. Due to glycosylation, the protein migrates to 75-95 kDa based on Tris-Bis PAGE result. |
| Endotoxin | Less than 1EU per µg by the LAL method. |
| Purity | > 95% as determined by Tris-Bis PAGE > 95% as determined by HPLC |

Formulation and Storage

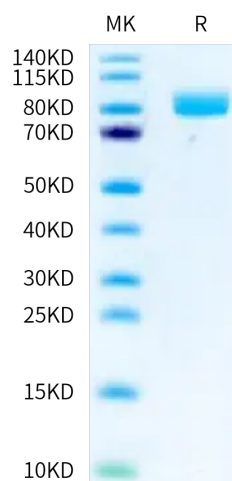
| | |
|-----------------------|---|
| Formulation | Lyophilized from 0.22 µm filtered solution in PBS (pH 7.4). Normally 8% trehalose is added as protectant before lyophilization. |
| Reconstitution | Centrifuge the tube before opening. Reconstituting to a concentration more than 100 µg/ml is recommended. Dissolve the lyophilized protein in distilled water. |
| Storage | -20 to -80°C for 12 months as supplied from date of receipt. -20 to -80°C for 3-6 months in unopened state after reconstitution. 2-8°C for 2-7 days after reconstitution. Recommend to aliquot the protein into smaller quantities for optimal storage. Please minimize freeze-thaw cycles. |

Background

Interleukin-18 (IL-18) is a member of the interleukin-1 family of cytokines produced constitutively by different cell types and by adipose tissue. Interleukin (IL)-18 was originally discovered as a factor that enhanced IFN-γ production from anti-CD3-stimulated Th1 cells, especially in the presence of IL-12. Upon stimulation with Ag plus IL-12, naive T cells develop into IL-18 receptor (IL-18R) expressing Th1 cells, which increase IFN-γ production in response to IL-18 stimulation.

Assay Data

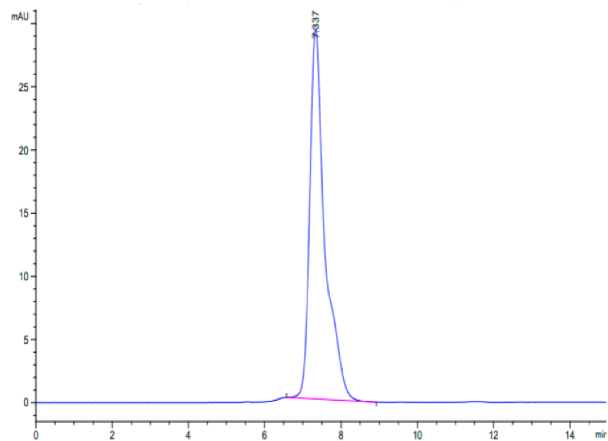
Tris-Bis PAGE



Rhesus macaque IL-18 R1 on Tris-Bis PAGE under reduced condition. The purity is greater than 95%.

SEC-HPLC

Assay Data



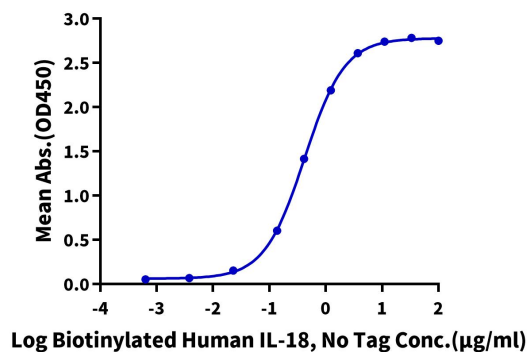
The purity of Rhesus macaque IL-18 R1 is greater than 95% as determined by SEC-HPLC.

Assay Data

ELISA Data

Rhesus macaque IL-18 R1, hFc Tag ELISA

0.1µg Rhesus macaque IL-18 R1, hFc Tag Per Well



Immobilized Rhesus macaque IL-18 R1, hFc Tag at 1µg/ml (100µl/well) on the plate. Dose response curve for Biotinylated Human IL-18, No Tag with the EC50 of 0.42µg/ml determined by ELISA.