

Human IL-17C Protein

Cat. No. ILC-HM417

Description

Source	Recombinant Human IL-17C Protein is expressed from HEK293 with His tag and Avi tag at the C-Terminus. It contains His19-Val197.
Accession	Q9P0M4
Molecular Weight	The protein has a predicted MW of 22.6 kDa. Due to glycosylation, the protein migrates to 25-28 kDa based on Bis-Tris PAGE result.
Endotoxin	Less than 1EU per µg by the LAL method.
Purity	> 95% as determined by Bis-Tris PAGE > 95% as determined by SEC-HPLC

Formulation and Storage

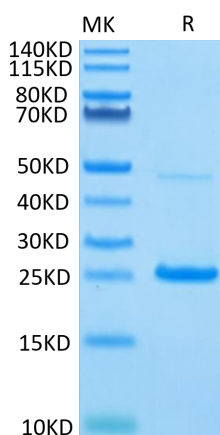
Formulation	Lyophilized from 0.22µm filtered solution in 50mM MES, 150mM NaCl (PH 6.0). Normally 8% trehalose is added as protectant before lyophilization.
Reconstitution	Centrifuge the tube before opening. Reconstituting to a concentration more than 100 µg/ml is recommended. Dissolve the lyophilized protein in 50mM MES, 150mM NaCl (PH 6.0).
Storage	-20 to -80°C for 12 months as supplied from date of receipt. -80°C for 3 months after reconstitution. Recommend to aliquot the protein into smaller quantities for optimal storage. Please minimize freeze-thaw cycles.

Background

Interleukin17C (IL17C) is a 1520 kDa glycosylated cytokine that plays an important role in mucosal immunity and chronic inflammation. The six IL17 cytokines (IL17AF) are encoded by separate genes but adopt a conserved cystine knot fold. IL17C is Cytokine that plays a crucial role in innate immunity of the epithelium, including to intestinal bacterial pathogens, in an autocrine manner. Stimulates the production of antibacterial peptides and proinflammatory molecules for host defense by signaling through the NF-kappa-B and MAPK pathways. Acts synergically with IL22 in inducing the expression of antibacterial peptides, including S100A8, S100A9, REG3A and REG3G.

Assay Data

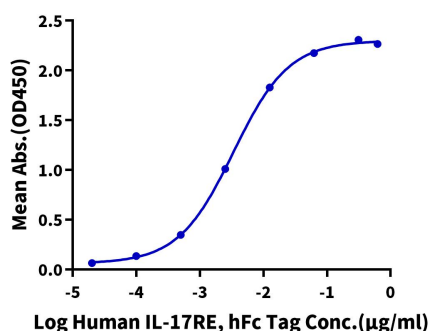
Bis-Tris PAGE



Human IL-17C on Bis-Tris PAGE under reduced condition. The purity is greater than 95%.

ELISA Data

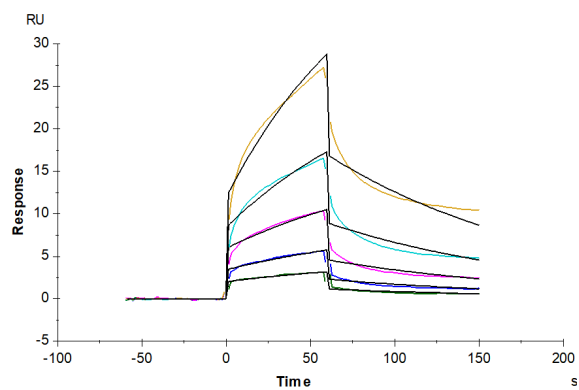
Human IL-17C, His Tag ELISA
0.1µg Human IL-17C, His Tag Per Well



Immobilized Human IL-17C, His Tag at 1µg/ml (100µl/well) on the plate. Dose response curve for Human IL-17RE, hFc Tag with the EC50 of 3.4ng/ml determined by ELISA (QC Test).

Assay Data

SPR Data



Human IL-17R alpha, hFc Tag captured on CM5 Chip via Protein A can bind Human IL-17C, His Tag with an affinity constant of 1.84 μ M as determined in SPR assay (Biacore T200).