

Human IL-1F10/IL-38 Protein

Cat. No. ILF-HY138

Description

Source	Recombinant Human IL-1F10/IL-38 Protein is expressed from Yeast with His tag at the C-terminus. It contains Met1-Trp152.
Accession	AAK68048.1
Molecular Weight	The protein has a predicted MW of 18.07 kDa. Due to glycosylation, the protein migrates to 20-23 kDa based on Bis-Tris PAGE result.
Endotoxin	Less than 1EU per μg by the LAL method.
Purity	> 95% as determined by Bis-Tris PAGE > 95% as determined by HPLC

Formulation and Storage

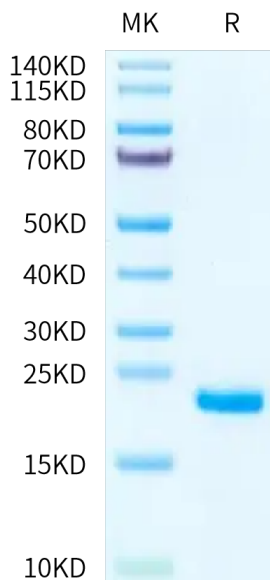
Formulation	Lyophilized from 0.22 μm filtered solution in PBS (pH 7.4). Normally 8% trehalose is added as protectant before lyophilization.
Reconstitution	Centrifuge the tube before opening. Reconstituting to a concentration more than 100 $\mu\text{g/ml}$ is recommended. Dissolve the lyophilized protein in distilled water.
Storage	-20 to -80°C for 12 months as supplied from date of receipt. -80°C for 3 months after reconstitution. Recommend to aliquot the protein into smaller quantities for optimal storage. Please minimize freeze-thaw cycles.

Background

Interleukin (IL)-38, a newly discovered IL-1 family cytokine, is expressed in several tissues and secreted by various cells. IL-38 has recently been reported to exert an anti-inflammatory function by binding to several receptors, including interleukin-36 receptor (IL-36R), interleukin-1 receptor accessory protein-like 1 (IL-1RAPL1), and interleukin-1 receptor 1 (IL-1R1) to block binding with other pro-inflammatory cytokines and inhibit subsequent signaling pathways; thereby regulating the differentiation and function of T cells, peripheral blood mononuclear cells, macrophages, and dendritic cells.

Assay Data

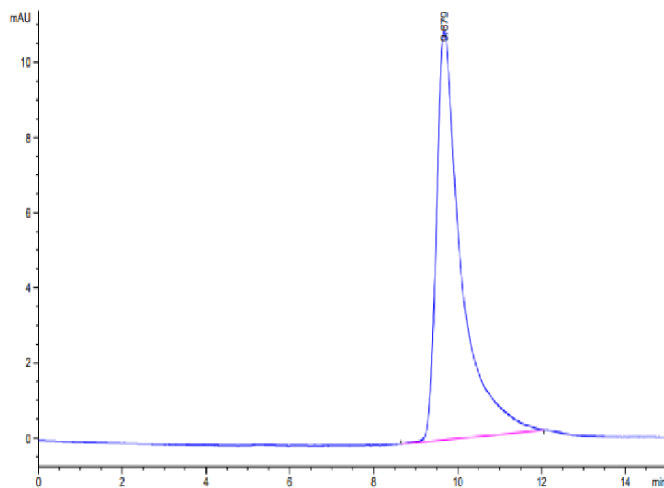
Bis-Tris PAGE



Human IL-1F10 on Bis-Tris PAGE under reduced condition. The purity is greater than 95%.

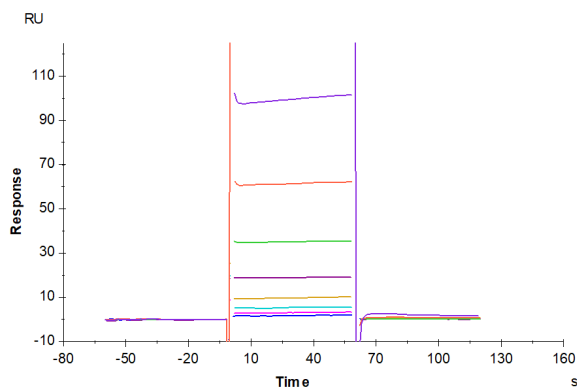
SEC-HPLC

Assay Data



The purity of Human IL-1F10 is greater than 95% as determined by SEC-HPLC.

SPR Data



Human IL-1 Rrp-2, hFc Tag captured on CM5 Chip via Protein A can bind Human IL-1F10, His Tag with an affinity constant of 35.38 μ M as determined in SPR assay (Biacore T200).