

Cynomolgus IL-31 RA Protein

Cat. No. ILR-CM1RA



Description

Source	Recombinant Cynomolgus IL-31 RA Protein is expressed from HEK293 with His tag at the C-terminus. It contains Ala20-Glu519.
Accession	XP_045249656.2
Molecular Weight	The protein has a predicted MW of 58.67 kDa. Due to glycosylation, the protein migrates to 90-120 kDa based on Bis-Tris PAGE result.
Endotoxin	Less than 0.1EU per µg by the LAL method.
Purity	>95% as determined by Bis-Tris PAGE >90% as determined by HPLC

Formulation and Storage

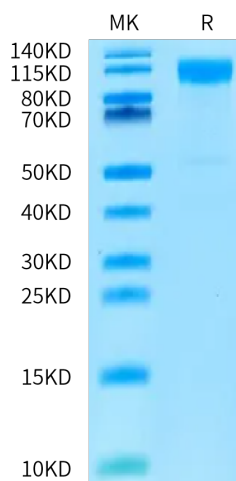
Formulation	Supplied as 0.22 µm filtered solution in PBS (pH 7.4).
Storage	Valid for 12 months from date of receipt when stored at -80°C. Recommend to aliquot the protein into smaller quantities for optimal storage. Please minimize freeze-thaw cycles.

Background

Interleukin-31 receptor A (IL-31RA) is a newly identified type I cytokine receptor, that is related to gp130, the common receptor of the interleukin (IL) -6 family cytokines. IL-31RA forms a functional receptor complex for IL-31 together with the beta subunit of oncostatin M receptor (OSMR beta). OSMR beta is expressed in a subset of small-sized nociceptive neurons of adult dorsal root ganglia (DRGs). IL-31 and OSM may thus have redundant functions in the development of OSMRbeta-expressing neurons.

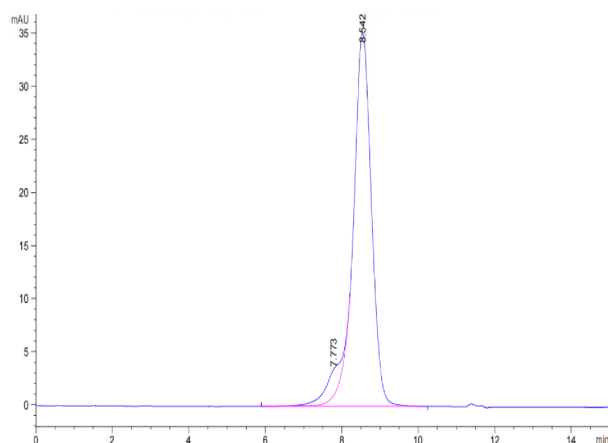
Assay Data

Bis-Tris PAGE



Cynomolgus IL-31 RA on Bis-Tris PAGE under reduced condition. The purity is greater than 95%.

SEC-HPLC



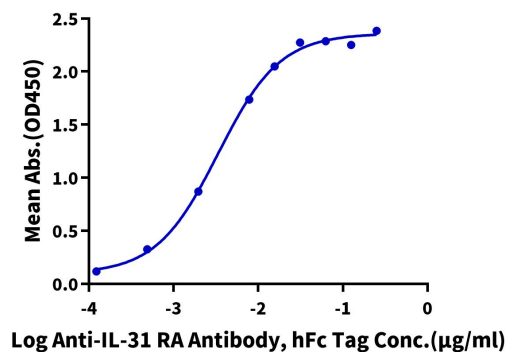
The purity of Cynomolgus IL-31 RA Protein is greater than 90% as determined by SEC-HPLC.

Assay Data

ELISA Data

Cynomolgus IL-31RA, His Tag ELISA

0.05µg Cynomolgus IL-31RA, His Tag Per Well



Immobilized Cynomolgus IL-31RA, His Tag at 0.5µg/ml (100µl/well) on the plate. Dose response curve for Anti-IL-31 RA Antibody, hFc Tag with the EC50 of 3.3ng/ml determined by ELISA (QC Test).