

# Cynomolgus IL-31 RA Protein

Cat. No. ILR-CM1RA



## Description

|                         |  |
|-------------------------|--|
| <b>Source</b>           | Recombinant Cynomolgus IL-31 RA Protein is expressed from HEK293 with His tag at the C-terminus.<br>It contains Ala20-Glu519.        |
| <b>Accession</b>        | XP_045249656.2   |
| <b>Molecular Weight</b> | The protein has a predicted MW of 58.67 kDa. Due to glycosylation, the protein migrates to 90-120 kDa based on Bis-Tris PAGE result. |
| <b>Endotoxin</b>        | Less than 1 EU per µg by the LAL method.   |
| <b>Purity</b>           | > 95% as determined by Bis-Tris PAGE<br>> 85% as determined by HPLC  |

## Formulation and Storage

|                       |   |
|-----------------------|---|
| <b>Formulation</b>    | Lyophilized from 0.22 µm filtered solution in PBS (pH 7.4). Normally 8% trehalose is added as protectant before lyophilization.   |
| <b>Reconstitution</b> | Dissolve the lyophilized protein in distilled water. Please refer to the Certificate of Analysis for detailed instructions.   |
| <b>Storage</b>        | -20 to -80°C for 12 months as supplied from date of receipt. -80°C for 3 months after reconstitution. Recommend to aliquot the protein into smaller quantities for optimal storage. Please minimize freeze-thaw cycles. |

## Background

Interleukin-31 receptor A (IL-31RA) is a newly identified type I cytokine receptor, that is related to gp130, the common receptor of the interleukin (IL) -6 family cytokines. IL-31RA forms a functional receptor complex for IL-31 together with the beta subunit of oncostatin M receptor (OSMR beta). OSMR beta is expressed in a subset of small-sized nociceptive neurons of adult dorsal root ganglia (DRGs). IL-31 and OSM may thus have redundant functions in the development of OSMRbeta-expressing neurons.

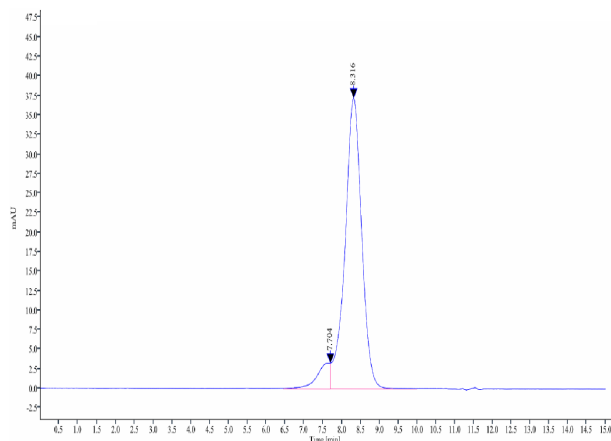
## Assay Data

### Bis-Tris PAGE



Cynomolgus IL-31 RA on Bis-Tris PAGE under reduced condition. The purity is greater than 95%.

### SEC-HPLC



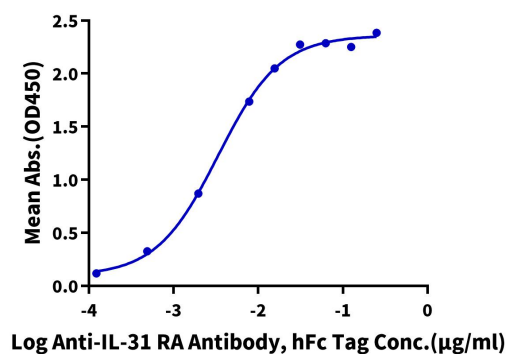
The purity of Cynomolgus IL-31 RA is greater than 85% as determined by SEC-HPLC.

Assay Data

ELISA Data

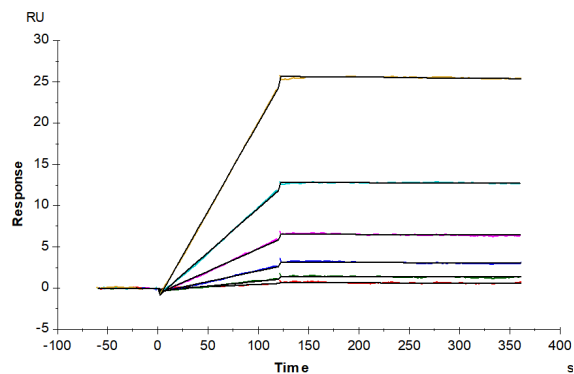
**Cynomolgus IL-31RA, His Tag ELISA**

0.05µg Cynomolgus IL-31RA, His Tag Per Well



Immobilized Cynomolgus IL-31RA, His Tag at 0.5µg/ml (100µl/well) on the plate. Dose response curve for Anti-IL-31 RA Antibody, hFc Tag with the EC50 of 3.3ng/ml determined by ELISA.

SPR Data



Cynomolgus IL-31, His Tag immobilized on CM5 Chip can bind Cynomolgus IL-31 RA, His Tag with an affinity constant of 6.83 nM as determined in SPR assay (Biacore T200).