

Human IL-22R alpha 1 Protein

Cat. No. ILR-HM122

Description

Source	Recombinant Human IL-22R alpha 1 Protein is expressed from HEK293 with His tag at the C-terminus. It contains His16-Thr228.
Accession	Q8N6P7
Molecular Weight	The protein has a predicted MW of 25.67 kDa. Due to glycosylation, the protein migrates to 35-45 kDa based on Bis-Tris PAGE result.
Endotoxin	Less than 1EU per μg by the LAL method.
Purity	> 95% as determined by Bis-Tris PAGE > 95% as determined by HPLC

Formulation and Storage

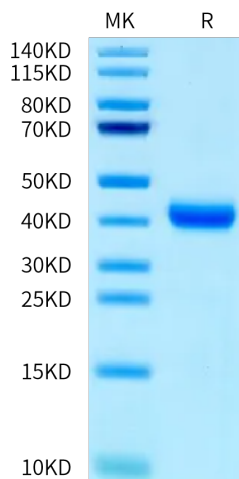
Formulation	Lyophilized from 0.22 μm filtered solution in PBS (pH 7.4). Normally 8% trehalose is added as protectant before lyophilization.
Reconstitution	Centrifuge the tube before opening. Reconstituting to a concentration more than 100 $\mu\text{g}/\text{ml}$ is recommended. Dissolve the lyophilized protein in distilled water.
Storage	-20 to -80°C for 12 months as supplied from date of receipt. -80°C for 3 months after reconstitution. Recommend to aliquot the protein into smaller quantities for optimal storage. Please minimize freeze-thaw cycles.

Background

IL-22 receptor, also known as IL-22 R alpha 1 and CRF2-9, is an approximately 65 kDa transmembrane glycoprotein in the type II cytokine receptor family (CRF). Component of the receptor for IL20, IL22 and IL24. Component of IL22 receptor formed by IL22RA1 and IL10RB enabling IL22 signaling via JAK/STAT pathways. IL22 also induces activation of MAPK1/MAPK3 and Akt kinases pathways. Component of one of the receptor for IL20 and IL24 formed by IL22RA1 and IL20RB also signaling through STATs activation. Mediates IL24 antiangiogenic activity as well as IL24 inhibitory effect on endothelial cell tube formation and differentiation.

Assay Data

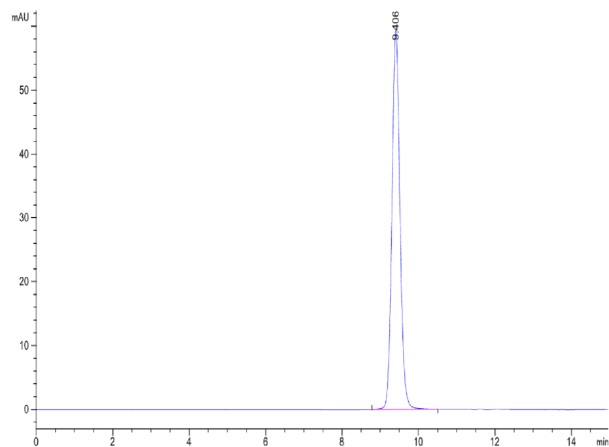
Bis-Tris PAGE



Human IL-22R alpha 1 on Bis-Tris PAGE under reduced condition. The purity is greater than 95%.

SEC-HPLC

Assay Data



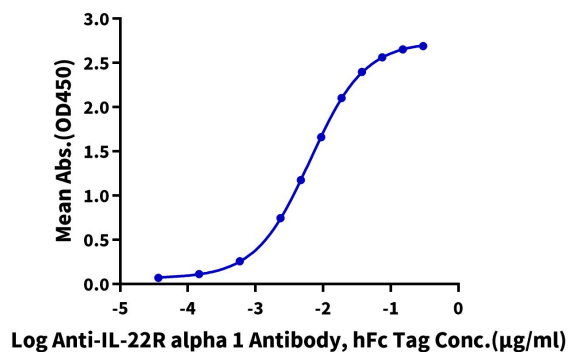
The purity of Human IL-22R alpha 1 is greater than 95% as determined by SEC-HPLC.

Assay Data

ELISA Data

Human IL-22R alpha 1, His Tag ELISA

0.05µg Human IL-22R alpha 1, His Tag Per Well



Immobilized Human IL-22R alpha 1, His Tag at 0.5µg/ml (100µl/well) on the plate. Dose response curve for Anti-IL-22R alpha 1 Antibody, hFc Tag with the EC50 of 6.4ng/ml determined by ELISA (QC Test).