

# Human IL-23R Protein

Cat. No. ILR-HM123

## Description

<b>Source</b>	Recombinant Human IL-23R Protein is expressed from HEK293 with His tag at the C-Terminus. It contains Gly24-Gly355.
<b>Accession</b>	Q5VWK5-1
<b>Molecular Weight</b>	The protein has a predicted MW of 39.15 kDa. Due to glycosylation, the protein migrates to 60-75 kDa based on Tris-Bis PAGE result.
<b>Endotoxin</b>	Less than 1EU per µg by the LAL method.
<b>Purity</b>	> 95% as determined by Tris-Bis PAGE > 95% as determined by HPLC

## Formulation and Storage

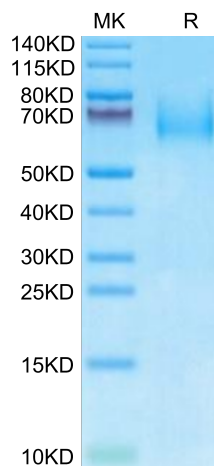
<b>Formulation</b>	Lyophilized from 0.22µm filtered solution in PBS (pH 7.4). Normally 8% trehalose is added as protectant before lyophilization.
<b>Reconstitution</b>	Centrifuge the tube before opening. Reconstituting to a concentration more than 100 µg/ml is recommended. Dissolve the lyophilized protein in distilled water.
<b>Storage</b>	-20 to -80°C for 12 months as supplied from date of receipt. -20 to -80°C for 3-6 months in unopened state after reconstitution. 2-8°C for 2-7 days after reconstitution. Recommend to aliquot the protein into smaller quantities for optimal storage. Please minimize freeze-thaw cycles.

## Background

Interleukin 23 (IL-23) is a heterodimeric cytokine composed of two disulfide-linked subunits, a p19 subunit that is unique to IL-23, and a p40 subunit that is shared with IL-12. The functional IL-23 receptor complex consists of two receptor subunits, the IL-12 receptor beta 1 subunit (IL-12 R beta 1) and the IL-23-specific receptor subunit (IL-23 R). This receptor associates with IL12RB1 to form the interleukin-23 receptor. Binds IL23 and mediates T-cells, NK cells and possibly certain macrophage/myeloid cells stimulation probably through activation of the Jak-Stat signaling cascade.

## Assay Data

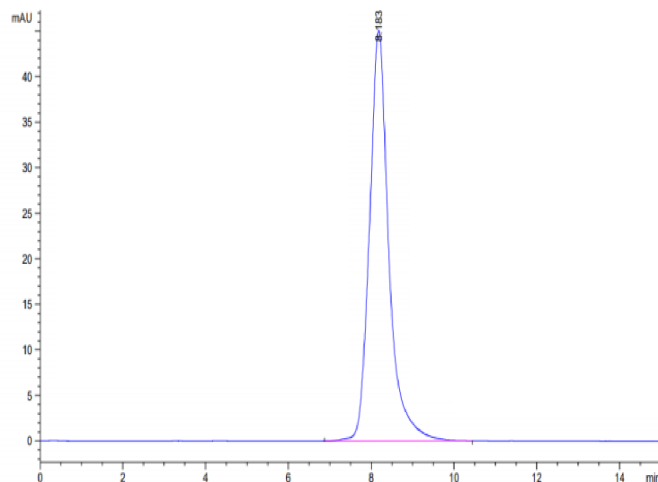
### Tris-Bis PAGE



Human IL-23R on Tris-Bis PAGE under reduced condition. The purity is greater than 95%.

### SEC-HPLC

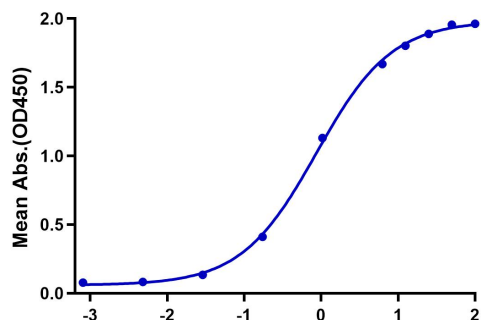
Assay Data



The purity of Human IL-23R is greater than 95% as determined by SEC-HPLC.

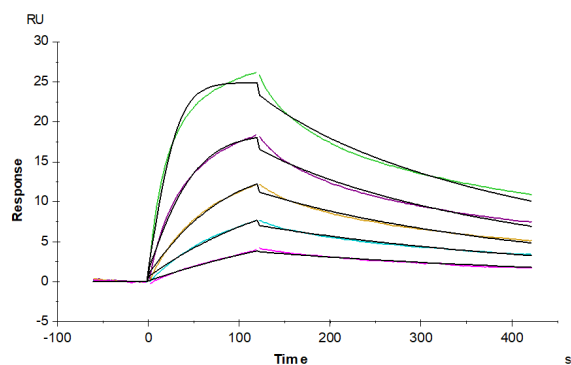
ELISA Data

**Human IL-23R, His Tag ELISA**  
0.5µg Human IL-23R, His Tag Per Well



Immobilized Human IL-23R, His Tag at 5µg/ml (100µl/well) on the plate. Dose response curve for Biotinylated Human IL-23 alpha&IL-12 beta, His Tag with the EC50 of 0.87µg/ml determined by ELISA (QC Test).

SPR Data



Human IL-23R, His Tag immobilized on CM5 Chip can bind Human IL-23 alpha&IL-12 beta, His Tag with an affinity constant of 5.72 nM as determined in SPR assay (Biacore T200).