

Human Soluble IL-6 R alpha/CD126 Protein, Ultra Low Endotoxin



Cat. No. ILR-HM126-UL

Description

Source	Recombinant Human Soluble IL-6 R alpha/CD126 Protein is expressed from HEK293 with His tag at the C-terminus.
	It contains Leu20-Pro355.
Accession	P08887-2
Molecular Weight	The protein has a predicted MW of 39.14 kDa. Due to glycosylation, the protein migrates to 60-80 kDa based on Bis-Tris PAGE result.
Endotoxin	Less than 0.01 EU per µg by the LAL method.
Purity	> 95% as determined by Bis-Tris PAGE
	> 95% as determined by HPLC

Formulation and Storage

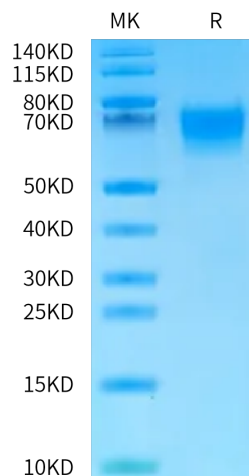
Formulation	Lyophilized from 0.22 µm filtered solution in PBS (pH 7.4). Normally 8% trehalose is added as protectant before lyophilization.
Reconstitution	Dissolve the lyophilized protein in distilled water. Please refer to the Certificate of Analysis for detailed instructions.
Storage	-20 to -80°C for 12 months as supplied from date of receipt. -80°C for 3 months after reconstitution. Recommend to aliquot the protein into smaller quantities for optimal storage. Please minimize freeze-thaw cycles.

Background

The multifunctional factor interleukin 6 (IL-6) exerts its activities through binding to a high-affinity receptor complex consisting of two membrane glycoproteins: an 80 kDa component receptor that binds IL-6 with low affinity (IL-6R alpha) and a signal-transducing component of 130 kDa (gp130) that does not bind IL-6 by itself, but is required for high-affinity binding of IL-6 by the complex. Both components of the receptor complex, IL-6R alpha and gp130 have been cloned, sequenced, and expressed.

Assay Data

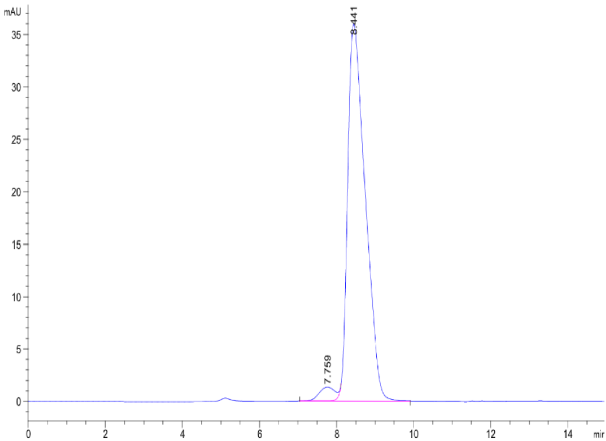
Bis-Tris PAGE



Human Soluble IL-6 R alpha on Bis-Tris PAGE under reduced condition. The purity is greater than 95%.

SEC-HPLC

Assay Data

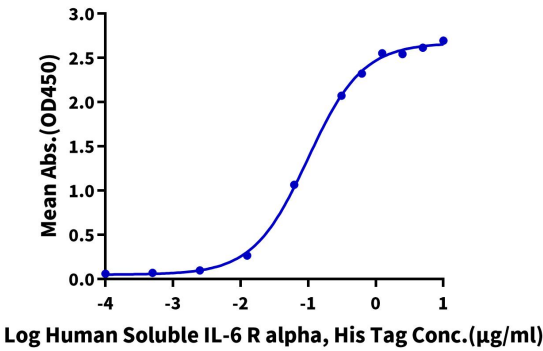


The purity of Human Soluble IL-6 R alpha is greater than 95% as determined by SEC-HPLC.

Assay Data

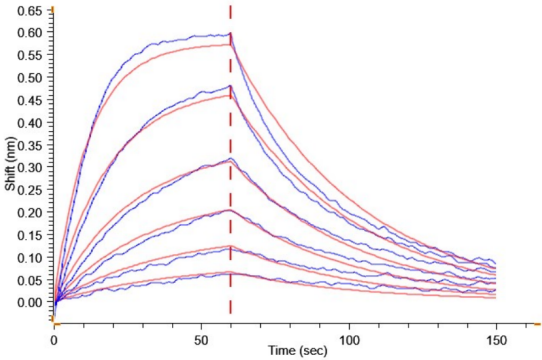
ELISA Data

Human Soluble IL-6 R alpha, His Tag ELISA
0.5µg Human IL-6, No Tag Per Well



Immobilized Human IL-6, No Tag at 5µg/ml (100µl/well) on the plate. Dose response curve for Human Soluble IL-6 R alpha, His Tag with the EC50 of 99.2ng/ml determined by ELISA (QC Test).

BLI Data



Loaded Human Soluble IL-6 R alpha, His Tag on Anti-His-Biosensor can bind Human IL-6, No Tag with an affinity constant of 18.80 nM as determined in BLI assay (Gator® Prime).