

Human IL-22R alpha 1 Protein

Cat. No. ILR-HM222



Description

Source	Recombinant Human IL-22R alpha 1 Protein is expressed from HEK293 with hFc tag at the C-Terminus It contains His16-Thr228.
Accession	Q8N6P7
Molecular Weight	The protein has a predicted MW of 51 kDa. Due to glycosylation, the protein migrates to 60-68 kDa based on Bis-Tris PAGE result.
Endotoxin	Less than 1 EU per µg by the LAL method.
Purity	>95% as determined by Bis-Tris PAGE >95% as determined by HPLC

Formulation and Storage

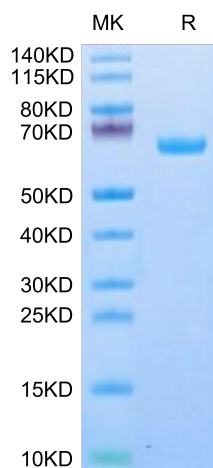
Formulation	Supplied as 0.22 µm filtered solution in PBS (pH 7.4).
Storage	Valid for 12 months from date of receipt when stored at -80°C. Recommend to aliquot the protein into smaller quantities for optimal storage. Please minimize freeze-thaw cycles.

Background

Interleukin (IL)-22 is a member of the IL-10 family of cytokines and represents an important effector molecule of activated Th22, Th1, and Th17 cells, as well as Tc-cell subsets, gammadelta T cells, natural killer (NK), and NKT cells. IL-22 mediates its effects via a heterodimeric transmembrane receptor complex consisting of IL-22R1 and IL-10R2 and subsequent Janus kinase-signal transducers and activators of transcription (JAK-STAT) signaling pathways including Jak1, Tyk2, and STAT3.

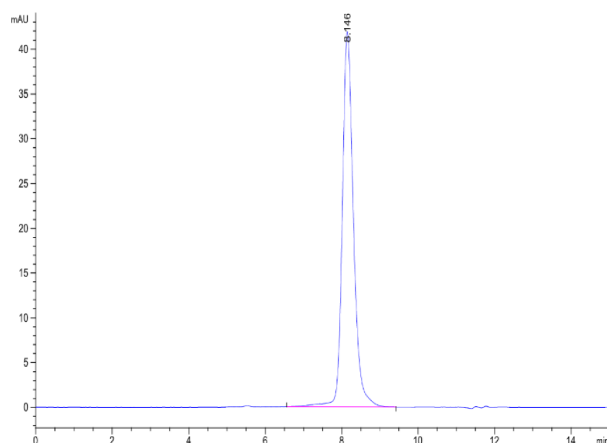
Assay Data

Bis-Tris PAGE



Human IL-22R alpha 1 on Bis-Tris PAGE under reduced condition. The purity is greater than 95%.

SEC-HPLC



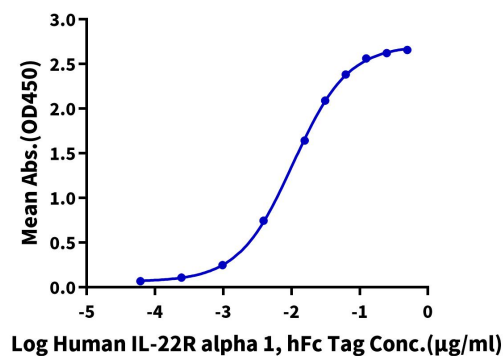
The purity of Human IL-22R alpha 1 is greater than 95% as determined by SEC-HPLC.

Assay Data

ELISA Data

Human IL-22R alpha 1, hFc Tag ELISA

0.2µg Human IL-22, His Tag Per Well

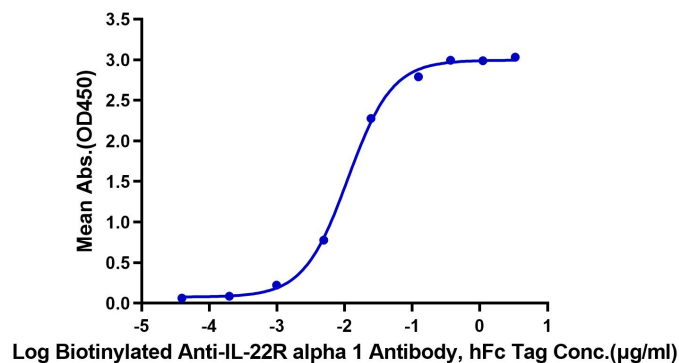


Immobilized Human IL-22, His Tag at 2 µg/ml (100 µl/Well) on the plate. Dose response curve for Human IL-22R alpha 1, hFc Tag with the EC50 of 10.6 ng/ml determined by ELISA (QC Test).

ELISA Data

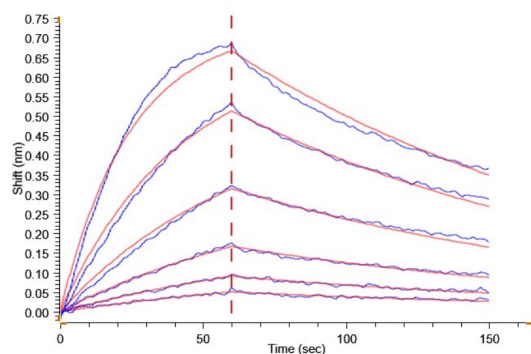
Human IL-22R alpha 1, hFc Tag ELISA

0.05µg Human IL-22R alpha 1, hFc Tag Per Well



Immobilized Human IL-22R alpha 1, hFc Tag at 0.5 µg/ml (100 µl/well) on the plate. Dose response curve for Biotinylated Anti-IL-22R alpha 1 Antibody, hFc Tag with the EC50 of 11.2 ng/ml determined by ELISA.

BLI Data



Loaded Human IL-22R alpha 1, hFc Tag on ProA-Biosensor can bind Human IL-22, His Tag with an affinity constant of 42.60 nM as determined in BLI assay (Gator® Prime).