

Human IL-22R alpha 1 Protein

Cat. No. ILR-HM222

Description

Source	Recombinant Human IL-22R alpha 1 Protein is expressed from HEK293 with hFc tag at the C-Terminus. It contains His16-Thr228.
Accession	Q8N6P7
Molecular Weight	The protein has a predicted MW of 51 kDa. Due to glycosylation, the protein migrates to 60-68 kDa based on Tris-Bis PAGE result.
Endotoxin	Less than 1EU per µg by the LAL method.
Purity	> 95% as determined by Tris-Bis PAGE > 95% as determined by HPLC

Formulation and Storage

Formulation	Lyophilized from 0.22µm filtered solution in PBS (pH 7.4). Normally 8% trehalose is added as protectant before lyophilization.
Reconstitution	Centrifuge the tube before opening. Reconstituting to a concentration more than 100 µg/ml is recommended. Dissolve the lyophilized protein in distilled water.
Storage	-20 to -80°C for 12 months as supplied from date of receipt. -20 to -80°C for 3-6 months in unopened state after reconstitution. 2-8°C for 2-7 days after reconstitution. Recommend to aliquot the protein into smaller quantities for optimal storage. Please minimize freeze-thaw cycles.

Background

Interleukin (IL)-22 is a member of the IL-10 family of cytokines and represents an important effector molecule of activated Th22, Th1, and Th17 cells, as well as Tc-cell subsets, gammadelta T cells, natural killer (NK), and NKT cells. IL-22 mediates its effects via a heterodimeric transmembrane receptor complex consisting of IL-22R1 and IL-10R2 and subsequent Janus kinase-signal transducers and activators of transcription (JAK-STAT) signaling pathways including Jak1, Tyk2, and STAT3.

Assay Data

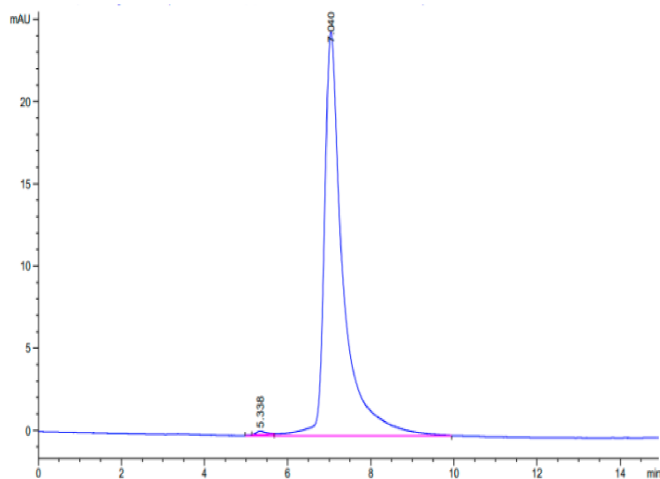
Tris-Bis PAGE



Human IL-22R alpha 1 on Tris-Bis PAGE under reduced condition. The purity is greater than 95%.

SEC-HPLC

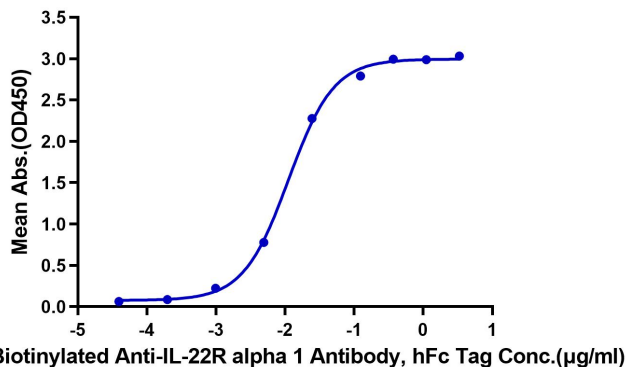
Assay Data



The purity of Human IL-22R alpha 1 is greater than 95% as determined by SEC-HPLC.

ELISA Data

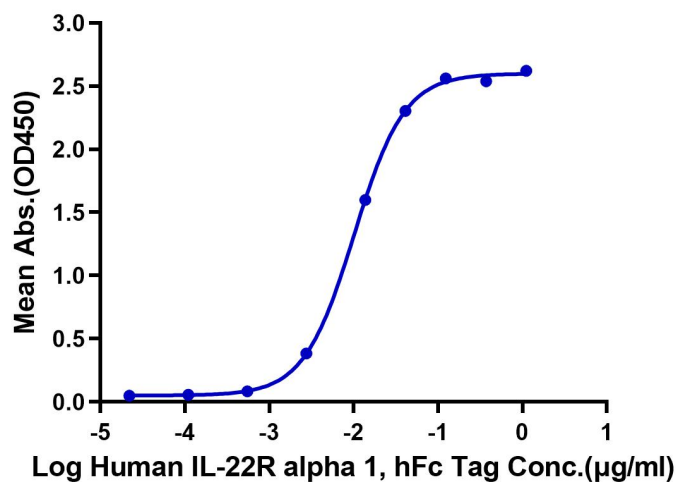
Human IL-22R alpha 1, hFc Tag ELISA
0.05µg Human IL-22R alpha 1, hFc Tag Per Well



Immobilized Human IL-22R alpha 1, hFc Tag at 0.5µg/ml (100µl/well) on the plate. Dose response curve for Biotinylated Anti-IL-22R alpha 1 Antibody, hFc Tag with the EC50 of 11.2ng/ml determined by ELISA (QC Test).

ELISA Data

Human IL-22R alpha 1, hFc Tag ELISA
0.2µg Human IL-22, His Tag Per Well



Immobilized Human IL-22, His Tag at 2µg/ml (100µl/Well) on the plate. Dose response curve for Human IL-22R alpha 1, hFc Tag with the EC50 of 10.2ng/ml determined by ELISA.