

Human IL-23R Protein

Cat. No. ILR-HM223



Description

Source	Recombinant Human IL-23R Protein is expressed from HEK293 with hFc tag at the C-Terminus.
	It contains Gly24-Gly355.
Accession	Q5VWK5-1
Molecular Weight	The protein has a predicted MW of 64.81 kDa. Due to glycosylation, the protein migrates to 80-110 kDa based on Bis-Tris PAGE result.
Endotoxin	Less than 1EU per µg by the LAL method.
Purity	> 95% as determined by Bis-Tris PAGE

Formulation and Storage

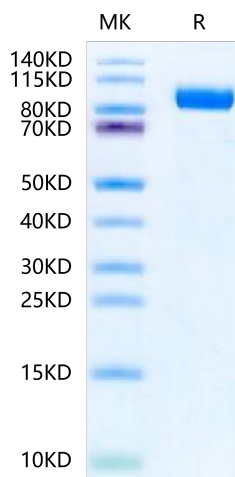
Formulation	Supplied as 0.22µm filtered solution in PBS (pH 7.4).
Storage	Valid for 12 months from date of receipt when stored at -80°C. Recommend to aliquot the protein into smaller quantities for optimal storage. Please minimize freeze-thaw cycles.

Background

Interleukin-23 (IL-23), a member of the IL-12 family of cytokines, is a heterodimeric cytokine. It is composed of subunits p40 (shared with IL-12) and p19 (an IL-12 p35-related subunit) and is secreted by several types of immune cells, such as natural killer cells and dendritic cells. The IL-23 receptor is composed of the subunit IL-12Rβ1 and the IL-23-specific subunit IL-23R. The binding of IL-23 to its specific cell surface receptor regulates a number of functions, including proliferation and differentiation of cells and secretion of cell factors.

Assay Data

Bis-Tris PAGE

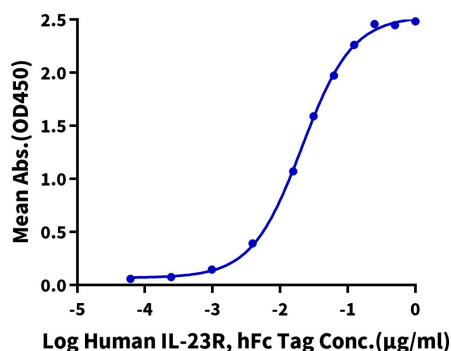


Human IL-23R on Bis-Tris PAGE under reduced condition. The purity is greater than 95%.

ELISA Data

Human IL-23R, hFc Tag ELISA

0.2µg Biotinylated Human IL-23 alpha&IL-12 beta, His Tag Per Well



Immobilized Biotinylated Human IL-23 alpha&IL-12 beta, His Tag at 2µg/ml (100µl/well) on the streptavidin precoated plate (5µg/ml). Dose response curve for Human IL-23R, hFc Tag with the EC50 of 21.0ng/ml determined by ELISA (QC Test).

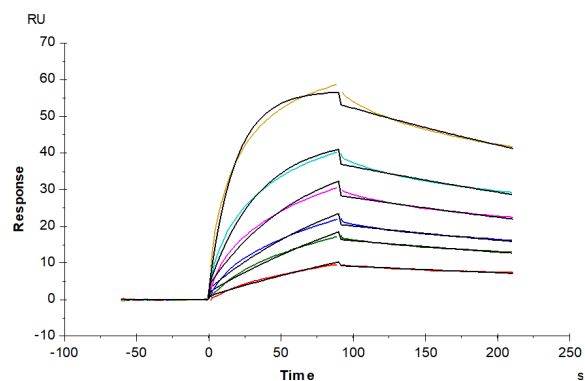
Human IL-23R Protein

Cat. No. ILR-HM223



Assay Data

SPR Data



Human IL-23R, hFc Tag captured on CM5 Chip via Protein A can bind Cynomolgus IL-23 alpha&IL-12 beta, His Tag with an affinity constant of 4.05 nM as determined in SPR assay (Biacore T200).