

Human IL-22R alpha 1&IL-10R beta Protein, Ultra Low Endotoxin



Cat. No. ILR-HM2AB-UL

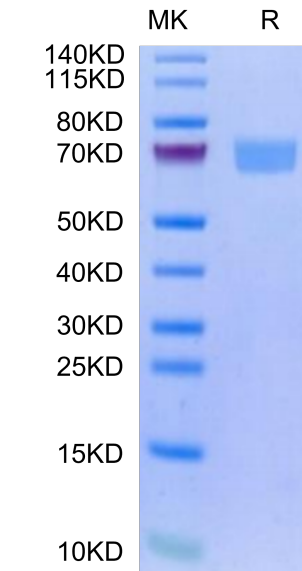
Description	
Source	Recombinant Human IL-22R alpha 1&IL-10R beta Protein is expressed from HEK293 with hFc tag and Avi Tag at the C-Terminus of IL-22R alpha 1 and IL-10R beta. It contains His16-Thr228 (IL-22R alpha 1) and Met20-Ser220 (IL-10R beta).
Accession	Q8N6P7(IL-22R alpha 1)&Q08334(IL-10R beta)
Molecular Weight	The protein has a predicted MW of 52.07 kDa (IL-22R alpha 1) and 48.85 kDa (IL-10R beta). Due to glycosylation, the protein migrates to 68-75 kDa based on Bis-Tris PAGE result.
Endotoxin	Less than 0.01 EU per µg by the LAL method.
Purity	> 95% as determined by Bis-Tris PAGE > 95% as determined by HPLC

Formulation and Storage	
Formulation	Lyophilized from 0.22µm filtered solution in PBS (pH 7.4). Normally 8% trehalose is added as protectant before lyophilization.
Reconstitution	Dissolve the lyophilized protein in distilled water. Please refer to the Certificate of Analysis for detailed instructions.
Storage	-20 to -80°C for 24 months as supplied from date of receipt.-80°C for 3 months after reconstitution.Recommend to aliquot the protein into smaller quantities for optimal storage. Please minimize freeze-thaw cycles.

Background	
IL-22Rα1 & IL-10Rβ are receptors for IL-22 and IL-10, mediate the activation of JAK-STAT, MAPK and other signaling pathways, and participate in the process of many inflammatory diseases. IL-22 Rα1 contains cytoplasmic motifs for interactions with signal transduction molecules, but formation of ternary complexes with IL10 Rβ or IL20 Rβ and the respective ligands is required for signal transduction.	

Assay Data

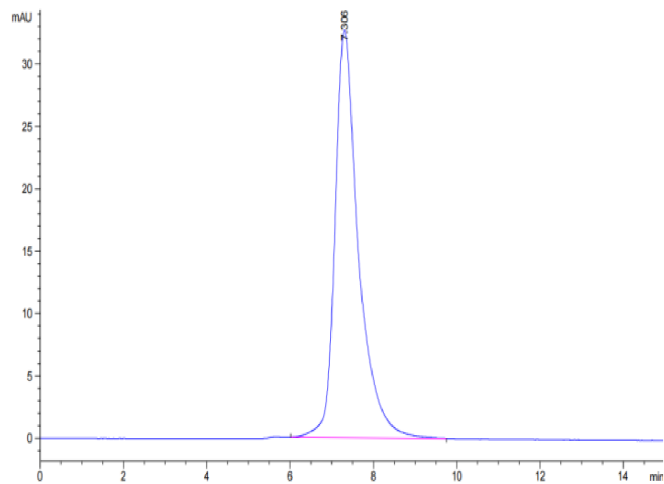
Bis-Tris PAGE



Human IL-22R alpha 1&IL-10R beta on Bis-Tris PAGE under reduced condition. The purity is greater than 95%.

SEC-HPLC

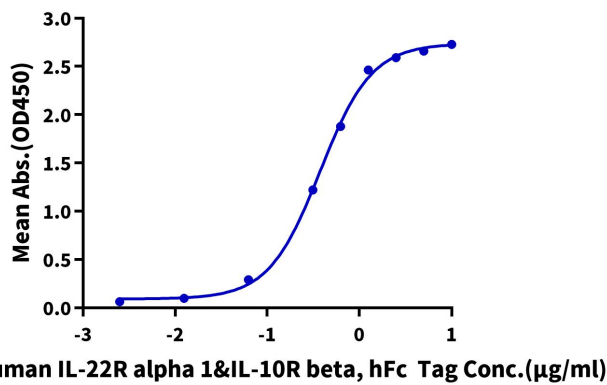
Assay Data



The purity of Human IL-22R alpha 1&IL-10R beta is greater than 95% as determined by SEC-HPLC.

ELISA Data

Human IL-22R alpha 1&IL-10R beta, hFc Tag ELISA
0.2µg Human IL-22, His Tag Per Well



Immobilized Human IL-22, His Tag at 2µg/ml (100µl/well) on the plate. Dose response curve for Human IL-22R alpha 1&IL-10R beta, hFc Tag with the EC50 of 0.37µg/ml determined by ELISA.