

Human IL-22R alpha 1&IL-10R beta Protein

Cat. No. ILR-HM2AB

Description

Source	Recombinant Human IL-22R alpha 1&IL-10R beta Protein is expressed from HEK293 with hFc tag and Avi Tag at the C-Terminus. It contains His16-Thr228 (IL-22R alpha 1) and Met20-Ser220 (IL-10R beta).
Accession	Q8N6P7(IL-22R alpha 1) & Q08334(IL-10R beta)
Molecular Weight	The protein has a predicted MW of 52.07 kDa (IL-22R alpha 1) and 48.85 kDa (IL-10R beta). Due to glycosylation, the protein migrates to 68-75 kDa based on Bis-Tris PAGE result.
Endotoxin	Less than 1EU per µg by the LAL method.
Purity	> 95% as determined by Bis-Tris PAGE > 95% as determined by HPLC

Formulation and Storage

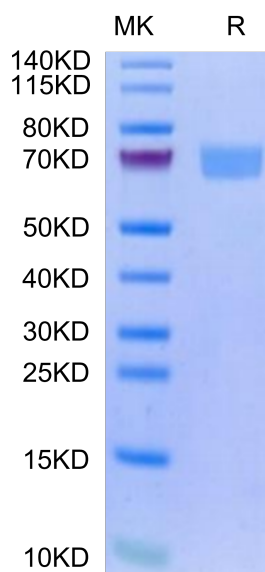
Formulation	Supplied as 0.22µm filtered solution in PBS (pH 7.4).
Storage	Valid for 12 months from date of receipt when stored at -80°C. Recommend to aliquot the protein into smaller quantities for optimal storage. Please minimize freeze-thaw cycles.

Background

IL-22Rα1 & IL-10Rβ are receptors for IL-22 and IL-10, mediate the activation of JAK-STAT, MAPK and other signaling pathways, and participate in the process of many inflammatory diseases. IL-22 Rα1 contains cytoplasmic motifs for interactions with signal transduction molecules, but formation of ternary complexes with IL10 Rβ or IL20 Rβ and the respective ligands is required for signal transduction.

Assay Data

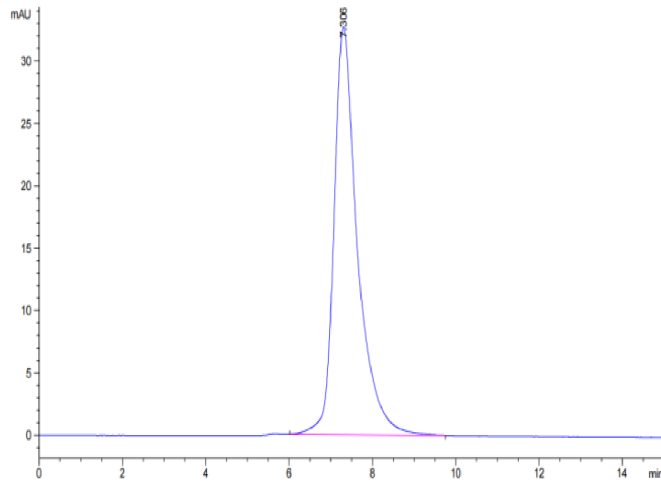
Bis-Tris PAGE



Human IL-22R alpha 1&IL-10R beta on Bis-Tris PAGE under reduced condition. The purity is greater than 95%.

SEC-HPLC

Assay Data

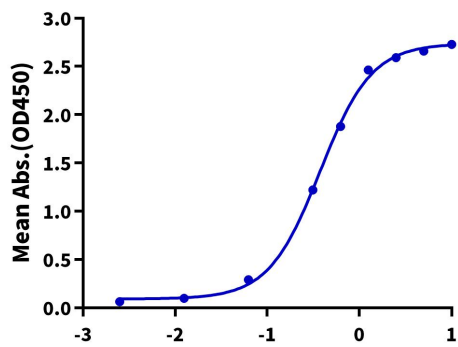


The purity of Human IL-22R alpha 1&IL-10R beta is greater than 95% as determined by SEC-HPLC.

ELISA Data

Human IL-22R alpha 1&IL-10R beta, hFc Tag ELISA

0.2µg Human IL-22, His Tag Per Well



Immobilized Human IL-22, His Tag at 2µg/ml (100µl/well) on the plate. Dose response curve for Human IL-22R alpha 1&IL-10R beta, hFc Tag with the EC50 of 0.37µg/ml determined by ELISA.