

Human IL-22R alpha 1&IL-10R beta Protein

Cat. No. ILR-HM2AB

Description

Source	Recombinant Human IL-22R alpha 1&IL-10R beta Protein is expressed from HEK293 with hFc tag and Avi Tag at the C-Terminus. It contains His16-Thr228(IL-22R alpha 1)&Met20-Ser220(IL-10R beta).
Accession	Q8N6P7(IL-22R alpha 1)&Q08334(IL-10R beta)
Molecular Weight	The protein has a predicted MW of 52.07 kDa(IL-22R alpha 1)&48.85 kDa(IL-10R beta). Due to glycosylation, the protein migrates to 68-75 kDa based on Tris-Bis PAGE result.
Endotoxin	Less than 1EU per µg by the LAL method.
Purity	> 95% as determined by Tris-Bis PAGE > 95% as determined by HPLC

Formulation and Storage

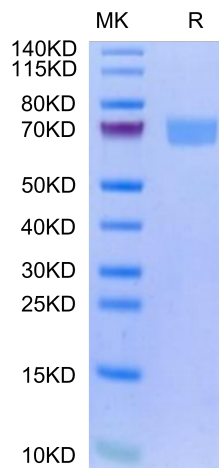
Formulation	Lyophilized from 0.22µm filtered solution in PBS (pH 7.4). Normally 8% trehalose is added as protectant before lyophilization.
Reconstitution	Centrifuge the tube before opening. Reconstituting to a concentration more than 100 µg/ml is recommended. Dissolve the lyophilized protein in distilled water.
Storage	-20 to -80°C for 12 months as supplied from date of receipt. -20 to -80°C for 3-6 months in unopened state after reconstitution. 2-8°C for 2-7 days after reconstitution. Recommend to aliquot the protein into smaller quantities for optimal storage. Please minimize freeze-thaw cycles.

Background

IL-22R α 1 & IL-10R β are receptors for IL-22 and IL-10, mediate the activation of JAK-STAT, MAPK and other signaling pathways, and participate in the process of many inflammatory diseases. IL-22 R α 1 contains cytoplasmic motifs for interactions with signal transduction molecules, but formation of ternary complexes with IL10 R β or IL20 R β and the respective ligands is required for signal transduction.

Assay Data

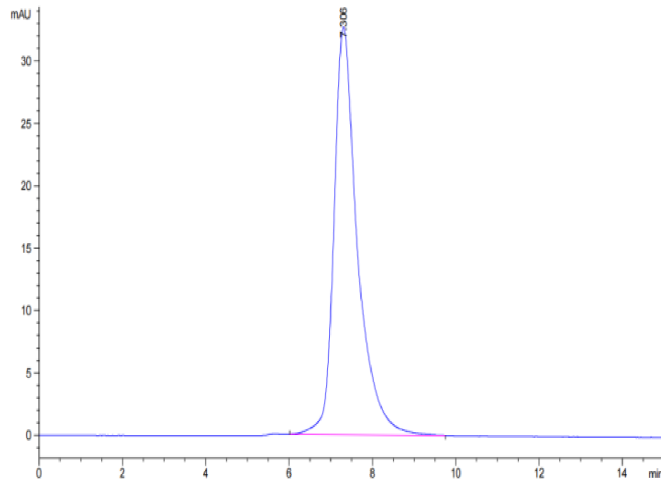
Tris-Bis PAGE



Human IL-22R alpha 1&IL-10R beta on Tris-Bis PAGE under reduced condition. The purity is greater than 95%.

SEC-HPLC

Assay Data

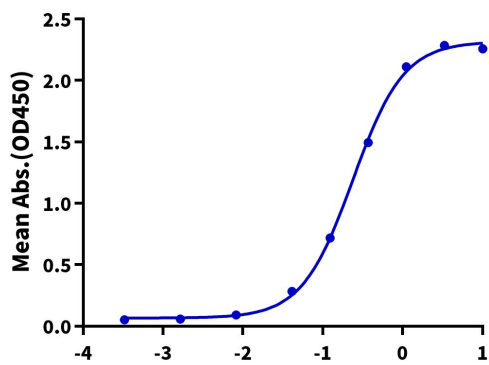


The purity of Human IL-22R alpha 1&IL-10R beta is greater than 95% as determined by SEC-HPLC.

ELISA Data

Human IL-22R alpha 1&IL-10R beta, hFc Tag ELISA

0.2µg Human IL-22, His Tag Per Well



Immobilized Human IL-22, His Tag at 2µg/ml (100µl/well) on the plate. Dose response curve for Human IL-22R alpha 1&IL-10R beta, hFc Tag with the EC50 of 0.24µg/ml determined by ELISA.