

Human IL-2 R beta&IL-2 R gamma Protein

Cat. No. ILR-HM2BG

Description

Source	Recombinant Human IL-2 R beta&IL-2 R gamma Protein is expressed from HEK293 with hFc tag at the C-Terminus. It contains Ala27-Thr240 (IL-2 R beta)&Leu23-Ala262 (IL-2 R gamma).
Accession	P14784(IL-2 R beta)&P31785-1(IL-2 R gamma)
Molecular Weight	The protein has a predicted MW of 51.3 kDa (IL-2 R beta)&54.6 kDa (IL-2 R gamma). Due to glycosylation, the protein migrates to 65-70 kDa&80-100 kDa based on Bis-Tris PAGE result.
Endotoxin	Less than 1EU per µg by the LAL method.
Purity	> 95% as determined by Bis-Tris PAGE > 95% as determined by HPLC

Formulation and Storage

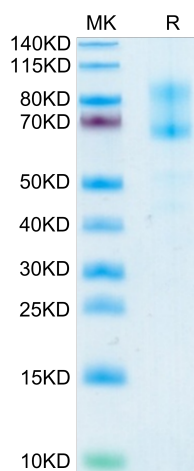
Formulation	Supplied as 0.22µm filtered solution in PBS (pH 7.4).
Storage	Valid for 12 months from date of receipt when stored at -80°C. Recommend to aliquot the protein into smaller quantities for optimal storage. Please minimize freeze-thaw cycles.

Background

Wilms' tumor 1 (WT1) is a transcription factor which plays a major role in cell proliferation, differentiation, survival, and apoptosis. WT1 was first identified as a tumor suppressor gene in Wilms' tumor. The expression of survival signaling genes, IL-2, IL-2RB, and IL-2RG, was also suppressed after WT1-siRNA treatment. In addition, the WT1 silencing also inhibited the S phase of the cell cycle and induced cell death. Moreover, transcriptional modulation of IL-2, IL-2RB, and IL2-2RG expression by WT1 was likely involved in this phenotypic change.

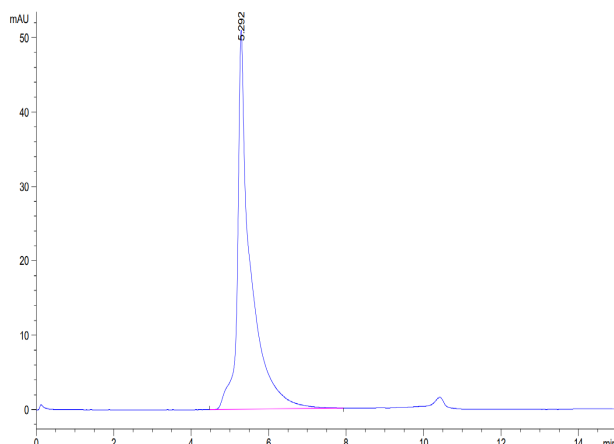
Assay Data

Bis-Tris PAGE



Human IL-2 R beta&IL-2 R gamma on Bis-Tris PAGE under reduced condition. The purity is greater than 95%.

SEC-HPLC



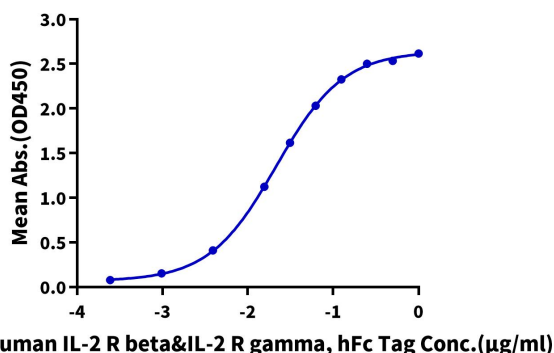
The purity of Human IL-2 R beta&IL-2 R gamma is greater than 95% as determined by SEC-HPLC.

Assay Data

ELISA Data

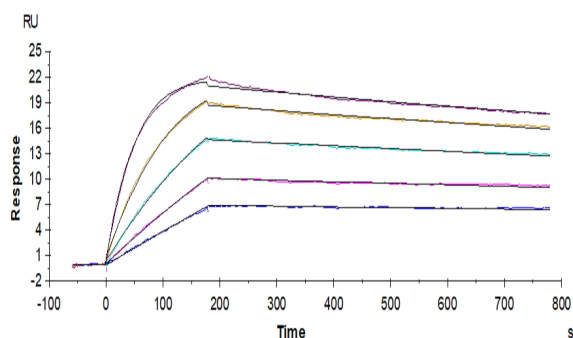
Human IL-2 R beta&IL-2 R gamma, hFc Tag ELISA

0.2µg Human IL-15Ra&IL-15, His Tag Per Well



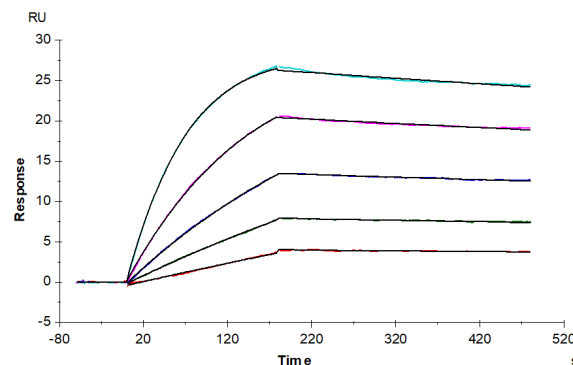
Immobilized Human IL-15RA&IL-15, His Tag at 2µg/ml (100µl/well) on the plate. Dose response curve for Human IL-2 R beta&IL-2 R gamma, hFc Tag with the EC50 of 21.5ng/ml determined by ELISA (QC Test).

SPR Data



Human IL-2 R beta&IL-2 R gamma, hFc Tag captured on CM5 Chip via Protein A can bind Human IL-2, No Tag with an affinity constant of 0.114 nM as determined in SPR assay (Biacore T200).

SPR Data



Human IL-2 R beta&IL-2 R gamma, hFc Tag captured on CM5 Chip via Protein A can bind Human IL-15Ra&IL-15, His Tag with an affinity constant of 0.084 nM as determined in SPR assay (Biacore T200).