

Human IL-31 RA Protein

Cat. No. ILR-HM2RA

Description

Source	Recombinant Human IL-31 RA Protein is expressed from HEK293 with hFc tag at the C-Terminus. It contains Ala20-Glu519.
Accession	Q8NI17-1
Molecular Weight	The protein has a predicted MW of 83.8 kDa. Due to glycosylation, the protein migrates to 110-135 kDa based on Tris-Bis PAGE result.
Endotoxin	Less than 1EU per µg by the LAL method.
Purity	> 95% as determined by Tris-Bis PAGE > 95% as determined by HPLC

Formulation and Storage

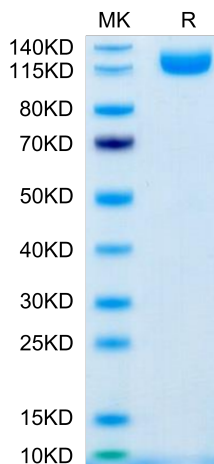
Formulation	Lyophilized from 0.22µm filtered solution in PBS (pH 7.4). Normally 8% trehalose is added as protectant before lyophilization.
Reconstitution	Centrifuge the tube before opening. Reconstituting to a concentration more than 100 µg/ml is recommended. Dissolve the lyophilized protein in distilled water.
Storage	-20 to -80°C for 12 months as supplied from date of receipt. -20 to -80°C for 3-6 months in unopened state after reconstitution. 2-8°C for 2-7 days after reconstitution. Recommend to aliquot the protein into smaller quantities for optimal storage. Please minimize freeze-thaw cycles.

Background

Interleukin-31 receptor A (IL-31RA) is a newly identified type I cytokine receptor, that is related to gp130, the common receptor of the interleukin (IL) -6 family cytokines. IL-31RA forms a functional receptor complex for IL-31 together with the beta subunit of oncostatin M receptor (OSMRbeta). OSMRbeta is expressed in a subset of small-sized nociceptive neurons of adult dorsal root ganglia (DRGs). IL-31 and OSM may thus have redundant functions in the development of OSMRbeta-expressing neurons.

Assay Data

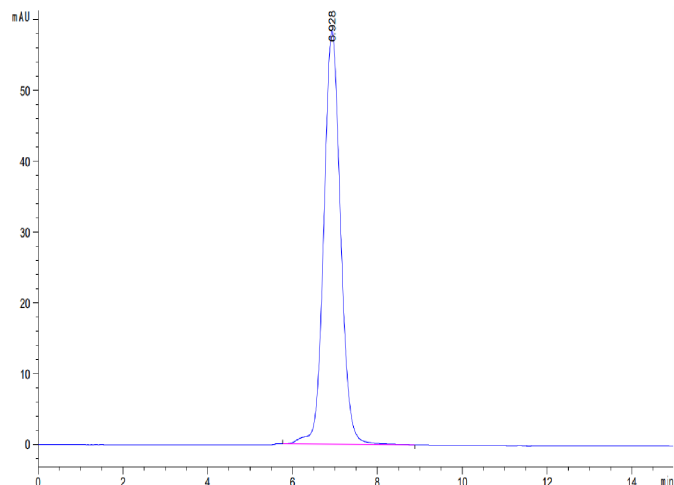
Tris-Bis PAGE



Human IL-31 RA on Tris-Bis PAGE under reduced condition. The purity is greater than 95%.

SEC-HPLC

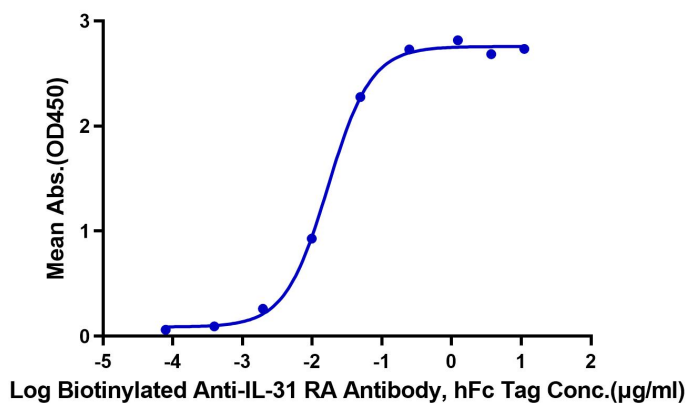
Assay Data



The purity of Human IL-31 RA is greater than 95% as determined by SEC-HPLC.

ELISA Data

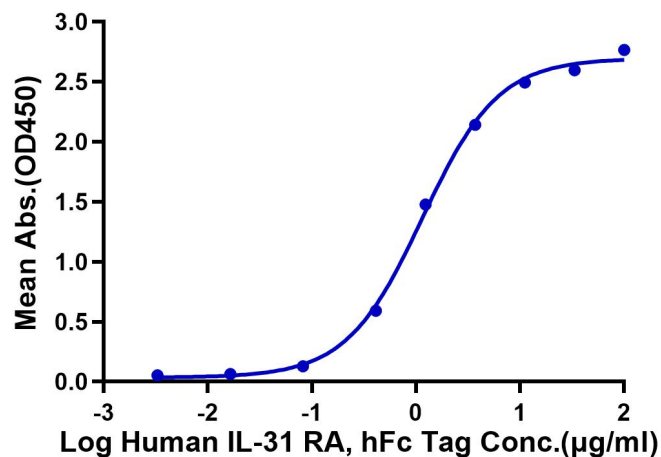
Human IL-31 RA, hFc Tag ELISA
0.5µg Human IL-31 RA, hFc Tag Per Well



Immobilized Human IL-31 RA, hFc Tag at 5µg/ml (100µl/well) on the plate. Dose response curve for Biotinylated Anti-IL-31 RA Antibody, hFc Tag with the EC50 of 16.9ng/ml determined by ELISA (QC Test).

ELISA Data

Human IL-31 RA, hFc Tag ELISA
0.5µg Human IL-31, His Tag Per Well



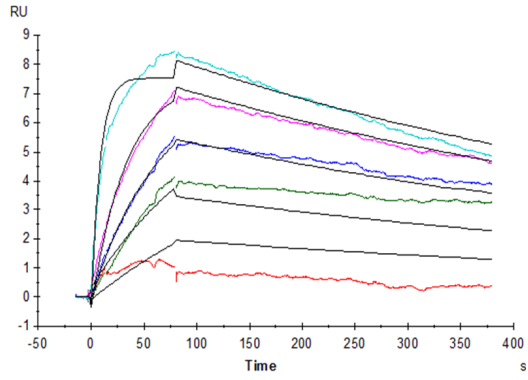
Immobilized Human IL-31, His Tag at 5µg/ml (100µl/Well) on the plate. Dose response curve for Human IL-31 RA, hFc Tag with the EC50 of 1.15µg/ml determined by ELISA.

SPR Data

Human IL-31 RA Protein

Cat. No. ILR-HM2RA

Assay Data



Human IL-31 RA, hFc Tag captured on Protein A chip, can bind Human IL-31, His Tag with an affinity constant of 1.5nM as determined in a SPR assay (Biacore T200).