

# Non-biotinylated Human IL-6 R alpha/CD126 Protein, Ultra Low Endotoxin



Cat. No. ILR-HM46R-UL

## Description

<b>Source</b>	Recombinant Human IL-6 R alpha/CD126 Protein is expressed from HEK293 with His tag and Avi tag at the C-Terminus. It contains Leu20-Pro365.
<b>Accession</b>	P08887-1
<b>Molecular Weight</b>	The protein has a predicted MW of 41.4 kDa. Due to glycosylation, the protein migrates to 65-78 kDa based on Bis-Tris PAGE result.
<b>Endotoxin</b>	Less than 0.01 EU per µg by the LAL method.
<b>Purity</b>	> 95% as determined by Bis-Tris PAGE > 95% as determined by HPLC

## Formulation and Storage

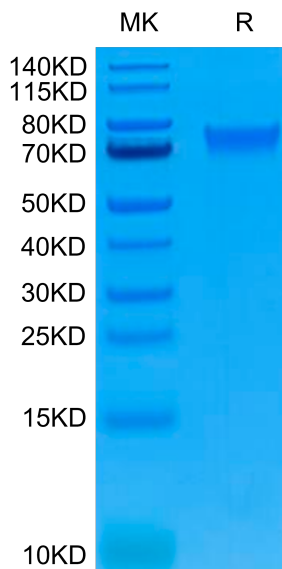
<b>Formulation</b>	Lyophilized from 0.22µm filtered solution in PBS (pH 7.4). Normally 8% trehalose is added as protectant before lyophilization.
<b>Reconstitution</b>	Dissolve the lyophilized protein in distilled water. Please refer to the Certificate of Analysis for detailed instructions.
<b>Storage</b>	-20 to -80°C for 12 months as supplied from date of receipt. -80°C for 3 months after reconstitution. Recommend to aliquot the protein into smaller quantities for optimal storage. Please minimize freeze-thaw cycles.

## Background

The multifunctional factor interleukin 6 (IL-6) exerts its activities through binding to a high-affinity receptor complex consisting of two membrane glycoproteins: an 80 kDa component receptor that binds IL-6 with low affinity (IL-6R alpha) and a signal-transducing component of 130 kDa (gp130) that does not bind IL-6 by itself, but is required for high-affinity binding of IL-6 by the complex. Both components of the receptor complex, IL-6R alpha and gp130 have been cloned, sequenced, and expressed.

## Assay Data

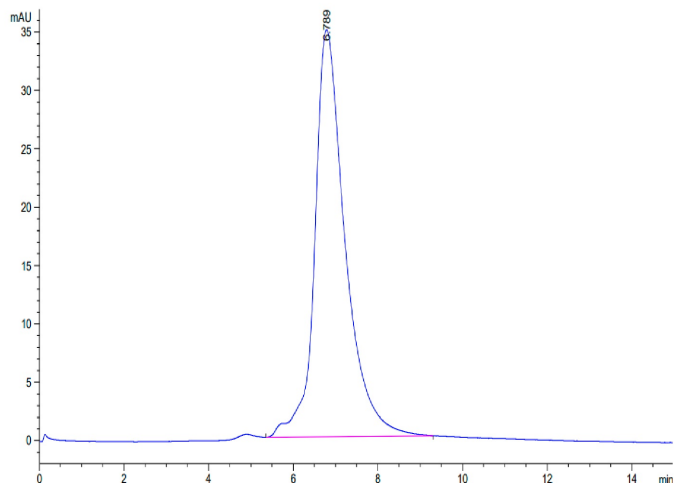
### Bis-Tris PAGE



Human IL-6 R alpha on Bis-Tris PAGE under reduced conditions. The purity is greater than 95%.

### SEC-HPLC

**Assay Data**

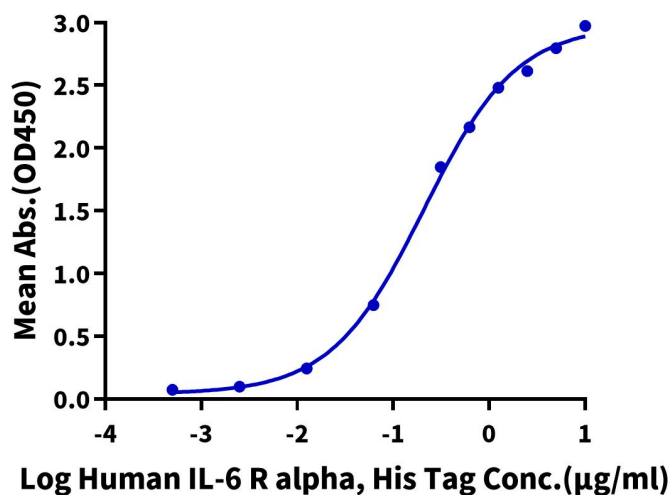


The purity of Human IL-6 R alpha is greater than 95% as determined by SEC-HPLC.

**ELISA Data**

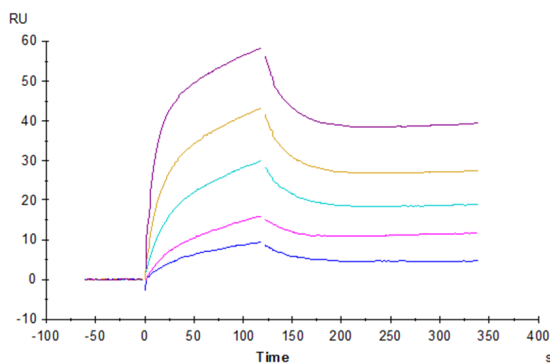
**Human IL-6 R alpha, His Tag ELISA**

0.5µg Human IL-6, No Tag Per Well



Immobilized Human IL-6, No Tag at 5µg/ml (100µl/well) on the plate. Dose response curve for Human IL-6 R alpha, His Tag with the EC50 of 0.21µg/ml determined by ELISA (QC Test).

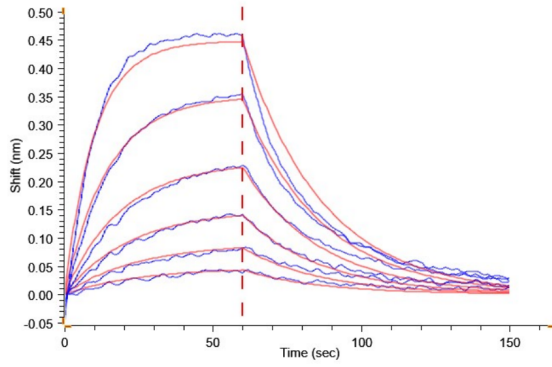
**SPR Data**



Human IL-6 R alpha, His Tag captured on CM5 Chip via anti-his antibody can bind Human IL-6, No Tag with an affinity constant of 0.22 nM as determined in SPR assay (Biacore T200).

**BLI Data**

Assay Data



Loaded Human IL-6 R alpha, His Tag on Anti-His-Biosensor can bind Human IL-6, No Tag with an affinity constant of 30.80 nM as determined in BLI assay .