

# Rat IL-22R alpha 1 Protein

Cat. No. ILR-RM222



## Description

Source	Recombinant Rat IL-22R alpha 1 Protein is expressed from HEK293 with hFc tag at the C-Terminus.
	It contains His16-Ala228.
Accession	NP_001178798.1
Molecular Weight	The protein has a predicted MW of 51.08 kDa. Due to glycosylation, the protein migrates to 55-70 kDa based on Bis-Tris PAGE result.
Endotoxin	Less than 1EU per µg by the LAL method.
Purity	> 95% as determined by Bis-Tris PAGE
	> 95% as determined by HPLC

## Formulation and Storage

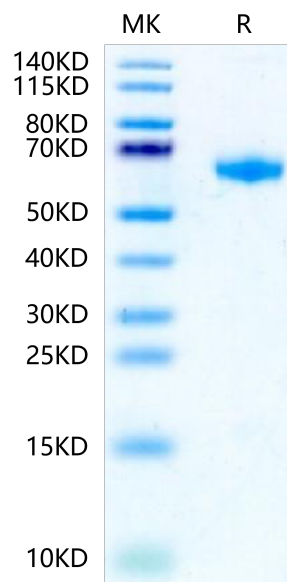
Formulation	Lyophilized from 0.22µm filtered solution in PBS, 100m L-Arginine (pH 7.4). Normally 8% trehalose is added as protectant before lyophilization.
Reconstitution	Centrifuge the tube before opening. Reconstituting to a concentration more than 100 µg/ml is recommended. Dissolve the lyophilized protein in distilled water.
Storage	-20 to -80°C for 12 months as supplied from date of receipt. -80°C for 3-6 months after reconstitution. 2-8°C for 2-7 days after reconstitution. Recommend to aliquot the protein into smaller quantities for optimal storage. Please minimize freeze-thaw cycles.

## Background

Interleukin (IL)-22 is a member of the IL-10 family of cytokines and represents an important effector molecule of activated Th22, Th1, and Th17 cells, as well as Tc-cell subsets, gammadelta T cells, natural killer (NK), and NKT cells. IL-22 mediates its effects via a heterodimeric transmembrane receptor complex consisting of IL-22R1 and IL-10R2 and subsequent Janus kinase-signal transducers and activators of transcription (JAK-STAT) signaling pathways including Jak1, Tyk2, and STAT3.

## Assay Data

### Bis-Tris PAGE



Rat IL-22R alpha 1 on Bis-Tris PAGE under reduced condition. The purity is greater than 95%.

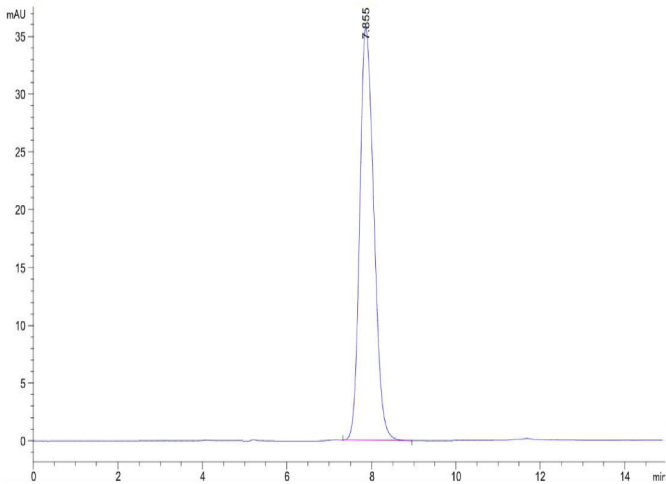
### SEC-HPLC

Rat IL-22R alpha 1 Protein

Cat. No. ILR-RM222



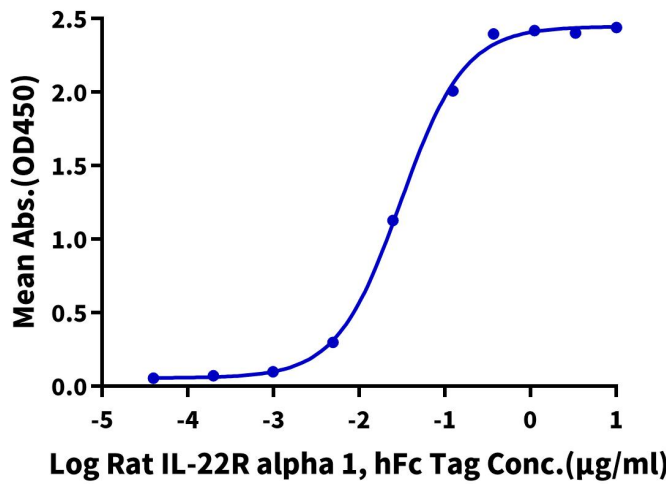
Assay Data



The purity of Rat IL-22R alpha 1 is greater than 95% as determined by SEC-HPLC.

ELISA Data

**Rat IL-22R alpha 1,hFc Tag ELISA**  
0.1µg Human IL-22, His Tag Per Well



Immobilized Human IL-22, His Tag at 1µg/ml (100µl/well) on the plate. Dose response curve for Rat IL-22R alpha 1, hFc Tag with the EC50 of 30.4ng/ml determined by ELISA.