

Cynomolgus Integrin alpha V beta 6 (ITGAV&ITGB6) Heterodimer Protein

Cat. No. ITG-CM1V6

Description

Source	Recombinant Cynomolgus Integrin alpha V beta 6 (ITGAV&ITGB6) Heterodimer Protein is expressed as a heterodimer of ITGAV and ITGB6 by co-expression in HEK293. Subunit ITGAV is fused with a His tag at the C-terminus and subunit ITGB6 contains no tag. It contains Phe31-Pro993 (ITGAV) acidic tail and Gly22-Pro709 (ITGB6) basic tail.
Accession	A0A2K5WCD3(ITGAV)&XP_045223090.2(ITGB6)
Molecular Weight	The protein has a predicted MW of 112.31 kDa (ITGAV) and 79.4 kDa (ITGB6). Due to glycosylation, the protein migrates to 120-160 kDa and 95-120 kDa based on Bis-Tris PAGE result.
Endotoxin	Less than 0.1 EU per µg by the LAL method.
Purity	> 95% as determined by Bis-Tris PAGE > 95% as determined by HPLC

Formulation and Storage

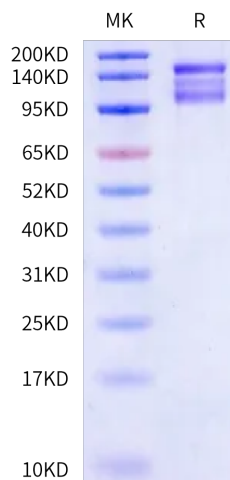
Formulation	Lyophilized from 0.22 µm filtered solution in PBS, 8% trehalose (pH 7.4).
Reconstitution	Dissolve the lyophilized protein in distilled water. Please refer to the Certificate of Analysis for detailed instructions.
Storage	-20 to -80°C for 12 months as supplied from date of receipt. -80°C for 3 months after reconstitution. Recommend to aliquot the protein into smaller quantities for optimal storage. Please minimize freeze-thaw cycles.

Background

ITGAV&ITGB6 is a receptor for fibronectin and cytotactin. It recognizes the sequence R-G-D in its ligands. Internalisation of integrin alpha-V/beta-6 via clathrin-mediated endocytosis promotes carcinoma cell invasion. ITGAV&ITGB6 acts as a receptor for fibrillin-1 (FBN1) and mediates R-G-D-dependent cell adhesion to FBN1.

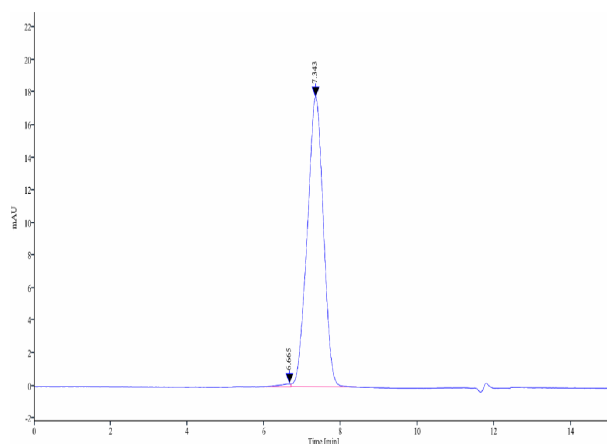
Assay Data

Bis-Tris PAGE



Cynomolgus ITGAV&ITGB6 on Bis-Tris PAGE under reduced condition. The purity is greater than 95%.

SEC-HPLC



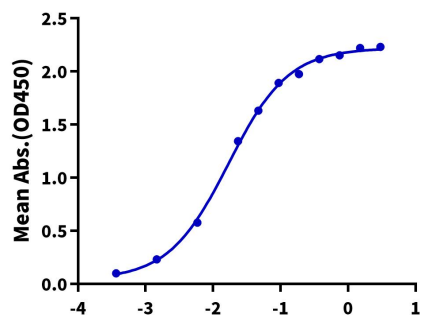
The purity of Cynomolgus ITGAV&ITGB6 is greater than 95% as determined by SEC-HPLC.

Assay Data

ELISA Data

Cynomolgus ITGAV&ITGB6, His Tag ELISA

0.2µg Cynomolgus ITGAV&ITGB6, His Tag Per Well



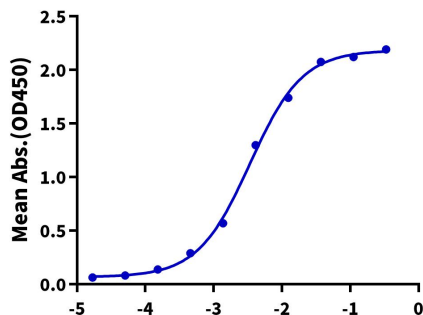
Log Biotinylated Human Latent TGF beta 1, His Avi Tag Conc.(µg/ml)

Immobilized Cynomolgus ITGAV&ITGB6, His Tag at 2µg/ml (100µl/well) on the plate. Dose response curve for Biotinylated Human Latent TGF beta 1, His Avi Tag (Cat. TG1-HM401B) with the EC50 of 16.9ng/ml determined by ELISA.

ELISA Data

Cynomolgus ITGAV&ITGB6, His Tag ELISA

0.05µg Cynomolgus ITGAV&ITGB6, His Tag Per Well



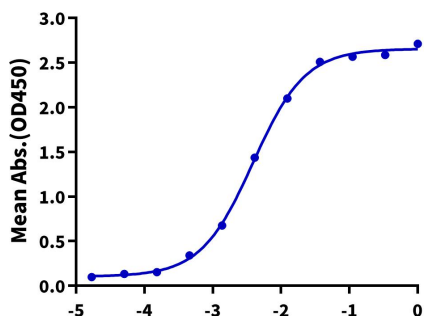
Log Anti-ITGAV&ITGB6 Antibody, hFc Tag Conc.(µg/ml)

Immobilized Cynomolgus ITGAV&ITGB6, His Tag at 0.5µg/ml (100µl/well) on the plate. Dose response curve for Anti-ITGAV&ITGB6 Antibody, hFc Tag with the EC50 of 3.4ng/ml determined by ELISA.

ELISA Data

Cynomolgus ITGAV&ITGB6, His Tag ELISA

0.2µg Cynomolgus ITGAV&ITGB6, His Tag Per Well



Log Anti-ITGB6 Antibody, hFc Tag Conc.(µg/ml)

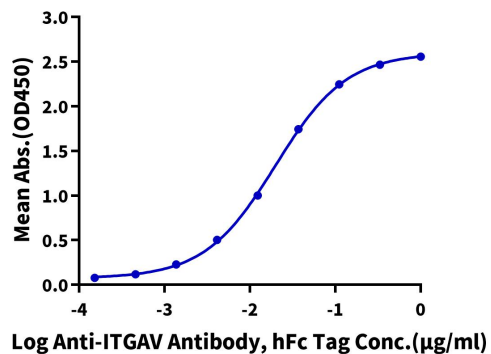
Immobilized Cynomolgus ITGAV&ITGB6, His Tag at 2µg/ml (100µl/well) on the plate. Dose response curve for Anti-ITGB6 Antibody, hFc Tag with the EC50 of 3.9ng/ml determined by ELISA.

ELISA Data

Assay Data

Cynomolgus ITGAV&ITGB6, His Tag ELISA

0.5µg Cynomolgus ITGAV&ITGB6, His Tag Per Well



Immobilized Cynomolgus ITGAV&ITGB6, His Tag at 5µg/ml (100µl/well) on the plate. Dose response curve for Anti-ITGAV Antibody, hFc Tag with the EC50 of 19.9ng/ml determined by ELISA.