

Human Integrin alpha V beta 6 (ITGAV&ITGB6) Heterodimer Protein

Cat. No. ITG-HM1A6

Description

Source	Recombinant Human Integrin alpha V beta 6 (ITGAV&ITGB6) Heterodimer Protein is expressed as a heterodimer of ITGAV and ITGB6 by co-expression in HEK293. Subunit ITGAV is fused with an acidic tail and a His tag at the C-terminus. It contains Phe31-Val992 (ITGAV) acidic tail and Gly22-Asn707 (ITGB6) basic tail.
Accession	P06756-1(ITGAV)&P18564-1(ITGB6)
Molecular Weight	The protein has a predicted MW of 112.21 kDa (ITGAV) and 79.1 kDa (ITGB6). Due to glycosylation, the protein migrates to 95-130 kDa and 140-160 kDa based on Bis-Tris PAGE result.
Endotoxin	Less than 0.1 EU per µg by the LAL method.
Purity	> 95% as determined by Bis-Tris PAGE > 95% as determined by HPLC

Formulation and Storage

Formulation	Lyophilized from 0.22 µm filtered solution in PBS (pH 7.4). Normally 8% trehalose is added as protectant before lyophilization.
Reconstitution	Dissolve the lyophilized protein in distilled water. Please refer to the Certificate of Analysis for detailed instructions.
Storage	-20 to -80°C for 12 months as supplied from date of receipt. -80°C for 3 months after reconstitution. Recommend to aliquot the protein into smaller quantities for optimal storage. Please minimize freeze-thaw cycles.

Background

ITGAV&ITGB6 is a receptor for fibronectin and cytotactin. It recognizes the sequence R-G-D in its ligands. Internalisation of integrin alpha-V/beta-6 via clathrin-mediated endocytosis promotes carcinoma cell invasion. ITGAV&ITGB6 acts as a receptor for fibrillin-1 (FBN1) and mediates R-G-D-dependent cell adhesion to FBN1.

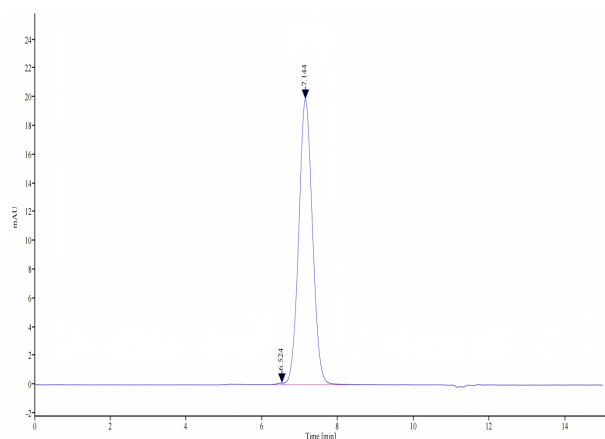
Assay Data

Bis-Tris PAGE



HumanITGAV&ITGB6 on Bis-Tris PAGE under reduced condition. The purity is greater than 95%.

SEC-HPLC



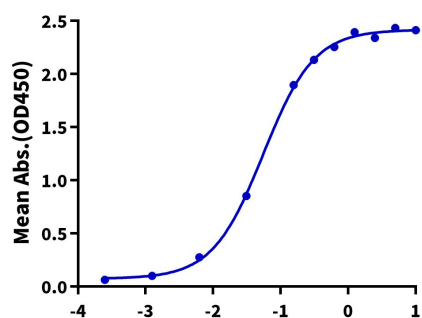
The purity of HumanITGAV&ITGB6 is greater than 95% as determined by SEC-HPLC.

Assay Data

ELISA Data

Human ITGAV&ITGB6, His Tag ELISA

0.2µg Human ITGAV&ITGB6, His Tag Per Well



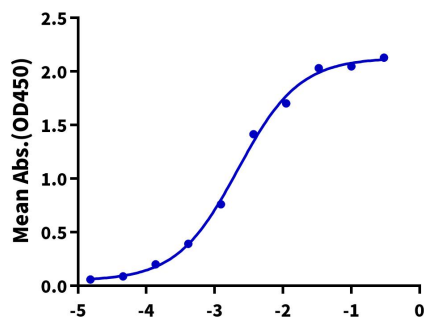
Log Biotinylated Human Latent TGF beta 1, His Avi Tag Conc.(µg/ml)

Immobilized Human ITGAV&ITGB6, His Tag at 2µg/ml (100µl/well) on the plate. Dose response curve for Biotinylated Human Latent TGF beta 1, His Avi Tag (Cat. TG1-HM401B) with the EC50 of 55.3ng/ml determined by ELISA.

ELISA Data

Human ITGAV&ITGB6, His Tag ELISA

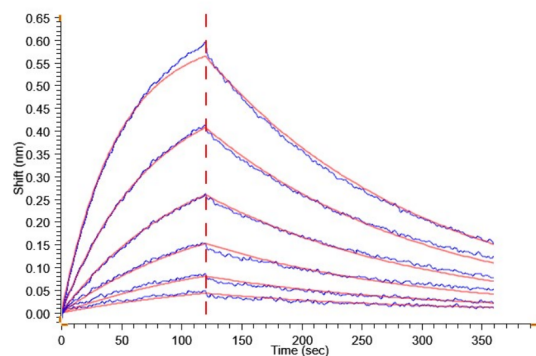
0.05µg Human ITGAV&ITGB6, His Tag Per Well



Log Anti-ITGAV&ITGB6 Antibody, hFc Tag Conc.(µg/ml)

Immobilized Human ITGAV&ITGB6, His Tag at 0.5µg/ml (100µl/well) on the plate. Dose response curve for Anti-ITGAV&ITGB6 Antibody, hFc Tag with the EC50 of 2.2ng/ml determined by ELISA.

BLI Data



Loaded Anti-ITGAV&ITGB6 Antibody on ProA-Biosensor can bind Human ITGAV&ITGB6, His Tag with an affinity constant of 17.20 nM as determined in BLI assay.