

Mouse&Human Chimeric Integrin alpha V beta 6 (ITGAV&ITGB6) Heterodimer Protein , Ultra Low Endotoxin



Cat. No. ITG-HM1V6-UL

Description

Source	Recombinant Mouse&Human Chimeric Integrin alpha V beta 6 (ITGAV&ITGB6) Heterodimer Protein is expressed from HEK293 with His tag at the C-terminus of ITGAV. It contains Phe31-Val988 (ITGAV) acidic tail and Gly22-Asn707 (ITGB6) basic tail.
Accession	P43406(ITGAV)&&P18564-1(ITGB6)
Molecular Weight	The protein has a predicted MW of 131.48 kDa (ITGAV) and 79.1 kDa (ITGB6). Due to glycosylation, the protein migrates to 120-160 kDa (ITGAV) and 90-120 kDa (ITGB6) based on Bis-Tris PAGE result.
Endotoxin	Less than 0.01 EU per µg by the LAL method.
Purity	> 95% as determined by Bis-Tris PAGE > 95% as determined by HPLC

Formulation and Storage

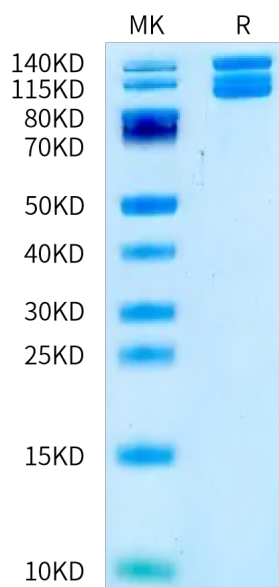
Formulation	Lyophilized from 0.22 µm filtered solution in PBS (pH 7.4). Normally 8% trehalose is added as protectant before lyophilization.
Reconstitution	Dissolve the lyophilized protein in distilled water. Please refer to the Certificate of Analysis for detailed instructions.
Storage	-20 to -80°C for 12 months as supplied from date of receipt. -80°C for 3 months after reconstitution. Recommend to aliquot the protein into smaller quantities for optimal storage. Please minimize freeze-thaw cycles.

Background

ITGAV&ITGB6 is a receptor for fibronectin and cytotactin. It recognizes the sequence R-G-D in its ligands. Internalisation of integrin alpha-V/beta-6 via clathrin-mediated endocytosis promotes carcinoma cell invasion. ITGAV&ITGB6 acts as a receptor for fibrillin-1 (FBN1) and mediates R-G-D-dependent cell adhesion to FBN1.

Assay Data

Bis-Tris PAGE



Mouse&Human Chimeric ITGAV&ITGB6 on Bis-Tris PAGE under reduced condition. The purity is greater than 95%.

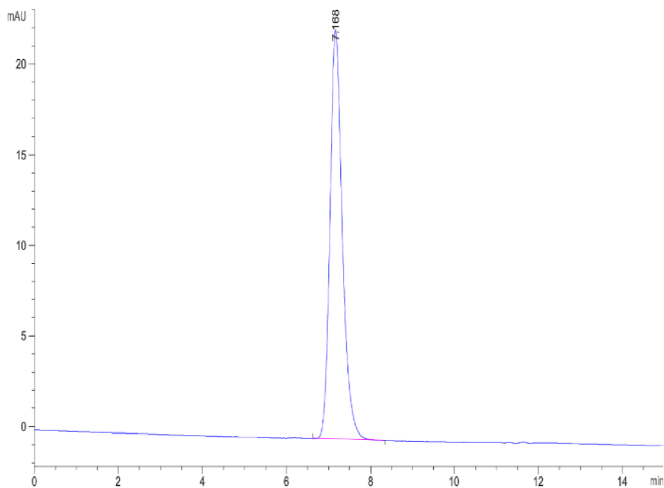
SEC-HPLC

Mouse&Human Chimeric Integrin alpha V beta 6 (ITGAV&ITGB6) Heterodimer Protein
, Ultra Low Endotoxin



Cat. No. ITG-HM1V6-UL

Assay Data

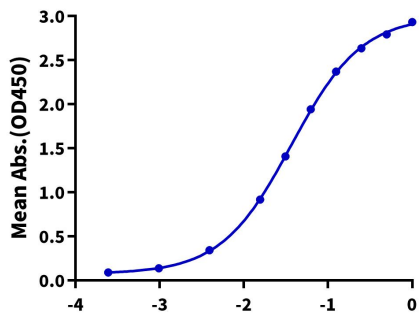


The purity of Mouse&Human Chimeric ITGAV&ITGB6 is greater than 95% as determined by SEC-HPLC.

ELISA Data

Human&Mouse Chimeric ITGAV&ITGB6, His Tag ELISA

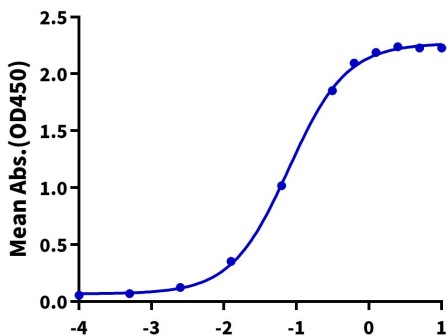
0.2µg Human&Mouse Chimeric ITGAV&ITGB6, His Tag Per Well



Immobilized Mouse&Human Chimeric ITGAV&ITGB6, His Tag at 2µg/ml (100µl/well) on the plate. Dose response curve for Biotinylated Human Latent TGF beta 1, His-Avi Tag with the EC50 of 36.8ng/ml determined by ELISA.

Human&Mouse Chimeric ITGAV&ITGB6, His Tag ELISA

0.1µg Human&Mouse Chimeric ITGAV&ITGB6, His Tag Per Well



Immobilized Human&Mouse Chimeric ITGAV&ITGB6, His Tag at 1µg/ml (100µl/well) on the plate. Dose response curve for Biotinylated Human LAP (TGF beta 1), His Tag with the EC50 of 78.4ng/ml determined by ELISA.

ELISA Data

Mouse&Human Chimeric Integrin alpha V beta 6 (ITGAV&ITGB6) Heterodimer Protein
, Ultra Low Endotoxin

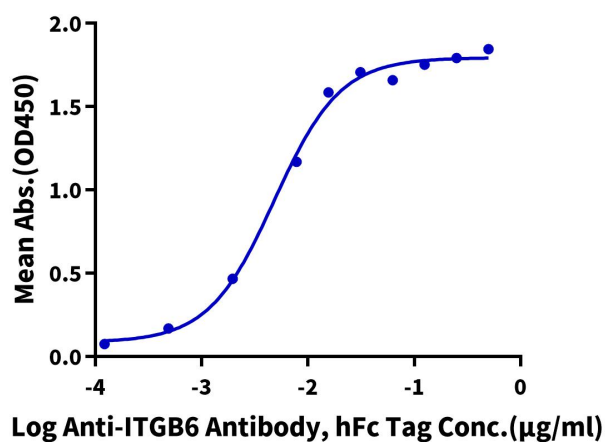
KACATUS

Cat. No. ITG-HM1V6-UL

Assay Data

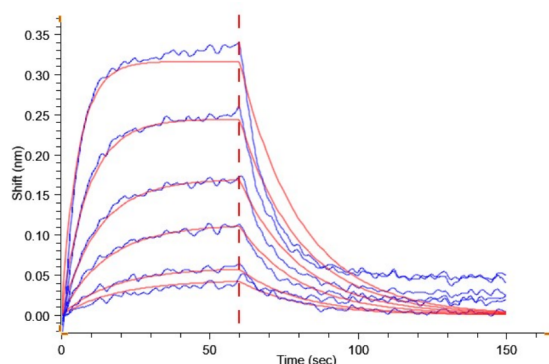
Mouse&Human Chimeric ITGAV&ITGB6, His Tag ELISA

0.1µg Mouse&Human Chimeric ITGAV&ITGB6, His Tag Per Well



Immobilized Mouse&Human Chimeric ITGAV&ITGB6, His Tag at 1µg/ml (100µl/well) on the plate. Dose response curve for Anti-ITGB6 Antibody, hFc Tag with the EC₅₀ of 4.8ng/ml determined by ELISA.

BLI Data



Loaded Anti-ITGB6 Ab., hFc-Avi Tag on ProA-Biosensor can bind Human&Mouse Chimeric ITGAV&ITGB6, His Tag with an affinity constant of 76.20 nM as determined in BLI assay (Gator® Prime).