

Rhesus macaque Integrin alpha V beta 8 (ITGAV&ITGB8) Heterodimer Protein



Cat. No. ITG-RM1V8

Description

Source	Recombinant Rhesus macaque Integrin alpha V beta 8 (ITGAV&ITGB8) Heterodimer Protein is expressed from HEK293 with His tag at the C-Terminus. It contains Phe31-Pro993 (ITGAV) acidic tail and Glu43-Ser681 (ITGB8) basic tail.
Accession	F6QSK2(ITGAV)&F7F3K9(ITGB8)
Molecular Weight	The protein has a predicted MW of 112.1 kDa (ITGAV) and 75.3 kDa (ITGB8). Due to glycosylation, the protein migrates to 90-140 kDa based on Bis-Tris PAGE result.
Endotoxin	Less than 1EU per µg by the LAL method.
Purity	> 95% as determined by Bis-Tris PAGE > 95% as determined by HPLC

Formulation and Storage

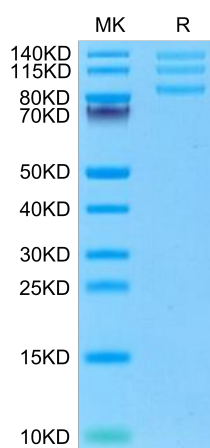
Formulation	Lyophilized from 0.22µm filtered solution in PBS (pH 7.4). Normally 8% trehalose is added as protectant before lyophilization.
Reconstitution	Centrifuge the tube before opening. Reconstituting to a concentration more than 100 µg/ml is recommended. Dissolve the lyophilized protein in distilled water.
Storage	-20 to -80°C for 24 months as supplied from date of receipt. -80°C for 3 months after reconstitution. Recommend to aliquot the protein into smaller quantities for optimal storage. Please minimize freeze-thaw cycles.

Background

Deletions of the genes encoding the integrin $\alpha V\beta 8$ (Itgav, Itgb8) have been shown to result in abnormal vascular development in the CNS, including prenatal and perinatal hemorrhage. Other work has indicated that a major function of this integrin in vivo is to promote TGF β activation.

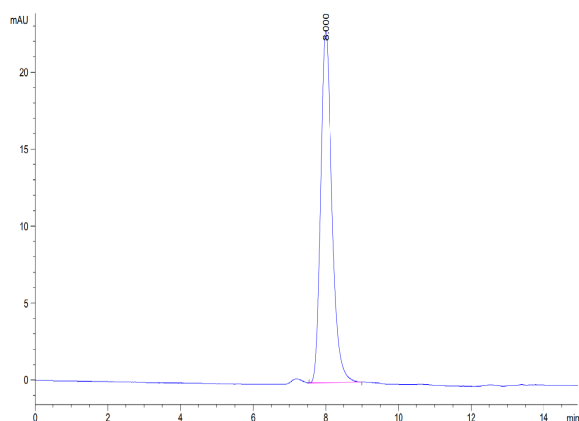
Assay Data

Bis-Tris PAGE



Rhesus macaque ITGAV&ITGB8 on Bis-Tris PAGE under reduced condition. The purity is greater than 95%.

SEC-HPLC



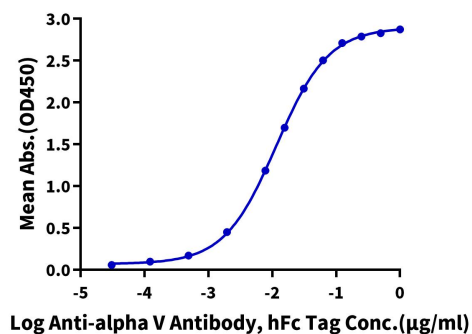
The purity of Rhesus macaque ITGAV&ITGB8 is greater than 95% as determined by SEC-HPLC.

Assay Data

ELISA Data

Rhesus macaque ITGAV&ITGB8, His Tag ELISA

0.5µg Rhesus macaque ITGAV&ITGB8, His Tag Per Well



Immobilized Rhesus macaque ITGAV&ITGB8, His Tag at 5µg/ml (100µl/well) on the plate. Dose response curve for Anti-alpha-v Antibody , hFc Tag with the EC50 of 11.6ng/ml determined by ELISA.