

# Human JAML Protein

Cat. No. JAM-HM101

## Description

<b>Source</b>	Recombinant Human JAML Protein is expressed from Expi293 with His tag at the C-terminal. It contains Leu20-Leu275.
<b>Accession</b>	NP_001091996.1
<b>Molecular Weight</b>	The protein has a predicted MW of 30.1 kDa. Due to glycosylation, the protein migrates to 38-42 kDa based on Tris-Bis PAGE result.
<b>Endotoxin</b>	Less than 1EU per µg by the LAL method.
<b>Purity</b>	> 95% as determined by Tris-Bis PAGE > 95% as determined by HPLC

## Formulation and Storage

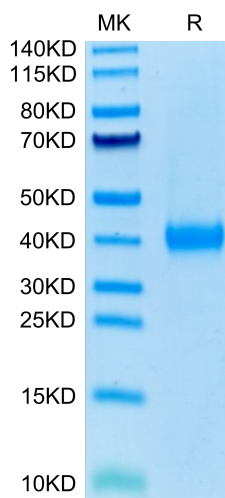
<b>Formulation</b>	Supplied as 0.22µm filtered solution in PBS (pH 7.4). Please dilute to the desired concentration according to the concentration of the solution shown on the product label.
<b>Storage</b>	Valid for 12 months from date of receipt when stored at -80°C. Recommend to aliquot the protein into smaller quantities for optimal storage. Please do not repeated freeze-thaw cycles.

## Background

JAML (junctional adhesion molecule-like), contains 2 extracellular immunoglobulin-like domains, a transmembrane segment, and a cytoplasmic tail. JAML mRNA is expressed in hematopoietic tissues and is prominently expressed in granulocytes. The fact that JAML protein is localized at the cell plasma membrane in the areas of cell-cell contacts, whereas it is not detected at free cell borders, suggests that JAML is engaged in homophilic interactions.

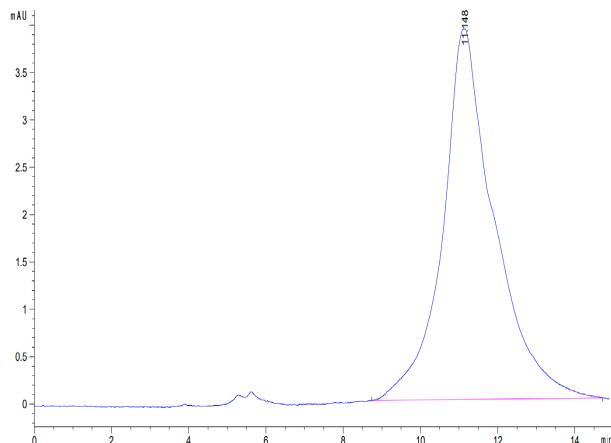
## Assay Data

### Tris-Bis PAGE



Human JAML on Tris-Bis PAGE under reduced condition. The purity is greater than 95%.

### SEC-HPLC



The purity of Human JAML is greater than 95% as determined by SEC-HPLC.