

Human JAML Protein

Cat. No. JAM-HM101



Description

Source	Recombinant Human JAML Protein is expressed from HEK293 with His tag at the C-Terminus. It contains Leu20-Leu275.
Accession	NP_001091996.1
Molecular Weight	The protein has a predicted MW of 30.1 kDa. Due to glycosylation, the protein migrates to 38-42 kDa based on Tris-Bis PAGE result.
Endotoxin	Less than 1EU per µg by the LAL method.
Purity	> 95% as determined by Tris-Bis PAGE > 95% as determined by HPLC

Formulation and Storage

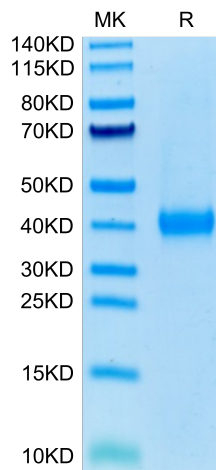
Formulation	Lyophilized from 0.22µm filtered solution in PBS (pH 7.4). Normally 8% trehalose is added as protectant before lyophilization.
Reconstitution	Centrifuge the tube before opening. Reconstituting to a concentration more than 100 µg/ml is recommended. Dissolve the lyophilized protein in distilled water.
Storage	-20 to -80°C for 12 months as supplied from date of receipt. -20 to -80°C for 3-6 months in unopened state after reconstitution. 2-8°C for 2-7 days after reconstitution. Recommend to aliquot the protein into smaller quantities for optimal storage. Please minimize freeze-thaw cycles.

Background

JAML (junctional adhesion molecule-like), contains 2 extracellular immunoglobulin-like domains, a transmembrane segment, and a cytoplasmic tail. JAML mRNA is expressed in hematopoietic tissues and is prominently expressed in granulocytes. The fact that JAML protein is localized at the cell plasma membrane in the areas of cell-cell contacts, whereas it is not detected at free cell borders, suggests that JAML is engaged in homophilic interactions.

Assay Data

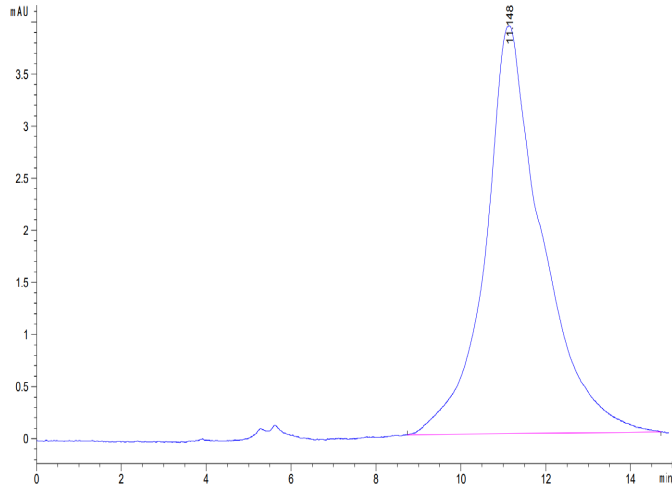
Tris-Bis PAGE



Human JAML on Tris-Bis PAGE under reduced condition. The purity is greater than 95%.

SEC-HPLC

Assay Data



The purity of Human JAML is greater than 95% as determined by SEC-HPLC.