

Human JAM-A Protein, Ultra Low Endotoxin

Cat. No. JAM-HM10A-UL

Description

Source	Recombinant Human JAM-A Protein is expressed from HEK293 with His tag at the C-Terminus. It contains Ser28-Val238.
Accession	Q9Y624-1
Molecular Weight	The protein has a predicted MW of 24 kDa. Due to glycosylation, the protein migrates to 28-35 kDa based on Bis-Tris PAGE result.
Endotoxin	Less than 0.01 EU per µg by the LAL method.
Purity	> 95% as determined by Bis-Tris PAGE

Formulation and Storage

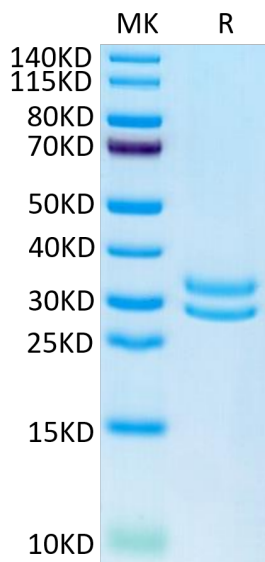
Formulation	Lyophilized from 0.22µm filtered solution in PBS (pH 7.4). Normally 8% trehalose is added as protectant before lyophilization.
Reconstitution	Dissolve the lyophilized protein in distilled water. Please refer to the Certificate of Analysis for detailed instructions.
Storage	-20 to -80°C for 24 months as supplied from date of receipt. -80°C for 3 months after reconstitution. Recommend to aliquot the protein into smaller quantities for optimal storage. Please minimize freeze-thaw cycles.

Background

junctional adhesion molecule A (JAM-A), a cell adhesion molecule, is highly elevated in human GBM cancer stem cells and predicts poor patient prognosis. While JAM-A is also highly expressed in other cells in the tumor microenvironment, specifically microglia and macrophages, JAM-A functions to suppress pathogenic microglial activation in the female tumor microenvironment, highlighting an emerging role for sex differences in the GBM microenvironment and suggesting that sex differences extend beyond previously reported tumor cell-intrinsic differences.

Assay Data

Bis-Tris PAGE



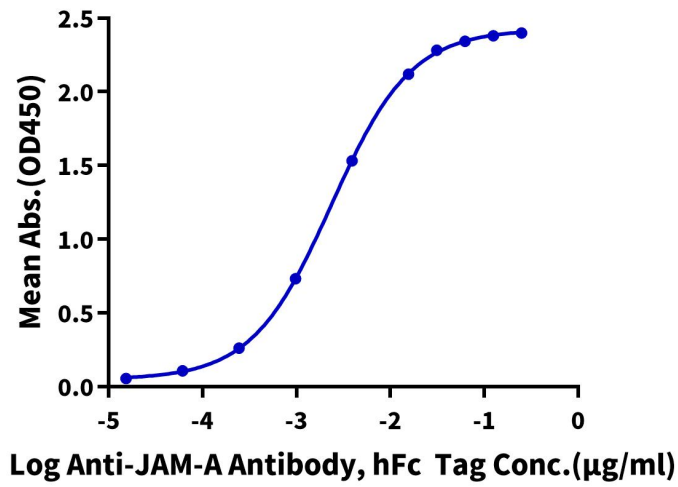
Human JAM-A on Bis-Tris PAGE under reduced condition. The purity is greater than 95%.

ELISA Data

Assay Data

Human JAM-A, His Tag ELISA

0.1µg Human JAM-A, His Tag Per Well



Immobilized Human JAM-A, His Tag at 1µg/ml (100µl/Well) on the plate. Dose response curve for Anti-JAM-A Antibody, hFc Tag with the EC50 of 2.4ng/ml determined by ELISA.