

# Biotinylated Human KIR2DL1 Protein

Cat. No. KIR-HM4L1B

## Description

<b>Source</b>	Recombinant Biotinylated Human KIR2DL1 Protein is expressed from HEK293 with His tag and Avi tag at the C-Terminus. It contains His22-Arg242.
<b>Accession</b>	P43626
<b>Molecular Weight</b>	The protein has a predicted MW of 27.1 kDa. Due to glycosylation, the protein migrates to 48-60 kDa based on Tris-Bis PAGE result.
<b>Endotoxin</b>	Less than 1EU per µg by the LAL method.
<b>Purity</b>	> 95% as determined by Tris-Bis PAGE > 95% as determined by HPLC

## Formulation and Storage

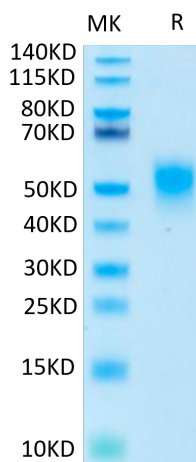
<b>Formulation</b>	Lyophilized from 0.22µm filtered solution in PBS (pH 7.4). Normally 8% trehalose is added as protectant before lyophilization.
<b>Reconstitution</b>	Centrifuge the tube before opening. Reconstituting to a concentration more than 100 µg/ml is recommended. Dissolve the lyophilized protein in distilled water.
<b>Storage</b>	-20 to -80°C for 12 months as supplied from date of receipt. -20 to -80°C for 3-6 months in unopened state after reconstitution. 2-8°C for 2-7 days after reconstitution. Recommend to aliquot the protein into smaller quantities for optimal storage. Please minimize freeze-thaw cycles.

## Background

KIR2DL1 (2DL1, formerly NKAT1, designated CD158a) is a 348 amino acid (aa) type I transmembrane glycoprotein that belongs to the human killer cell Ig-like receptor (KIR) family. KIR2DL1 is a receptor on natural killer (NK) cells for some HLA-C alleles such as w4 and w6. Inhibits the activity of NK cells thus preventing cell lysis.

## Assay Data

### Tris-Bis PAGE



Biotinylated Human KIR2DL1 on Tris-Bis PAGE under reduced conditions. The purity is greater than 95%.

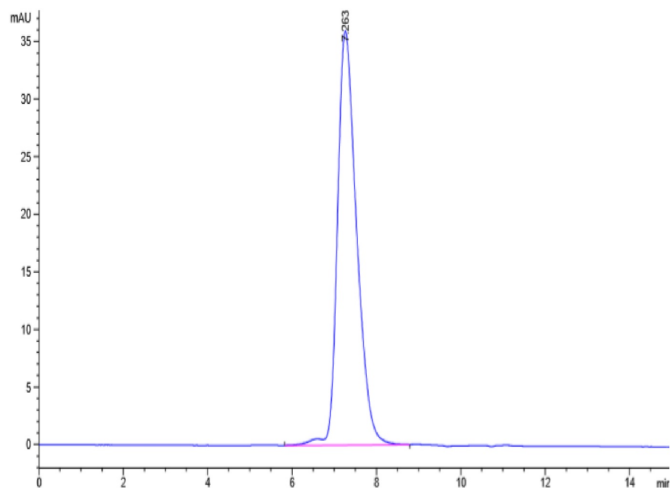
### SEC-HPLC

# Biotinylated Human KIR2DL1 Protein

Cat. No. KIR-HM4L1B



## Assay Data



The purity of Biotinylated Human KIR2DL1 is greater than 95% as determined by SEC-HPLC.