

# Human Kallikrein 11/KLK11 Protein (active form), Ultra Low Endotoxin



Cat. No. KLK-HM111-UL

## Description

<b>Source</b>	Recombinant Human Kallikrein 11/KLK11 Protein (active form) is expressed from HEK293 with His tag at the C-terminus. It contains Ile54-Asn282.
<b>Accession</b>	Q9UBX7-2
<b>Molecular Weight</b>	The protein has a predicted MW of 26.85 kDa. Due to glycosylation, the protein migrates to 35-45 kDa based on Bis-Tris PAGE result.
<b>Endotoxin</b>	Less than 0.01 EU per µg by the LAL method.
<b>Purity</b>	> 95% as determined by Bis-Tris PAGE > 95% as determined by HPLC

## Formulation and Storage

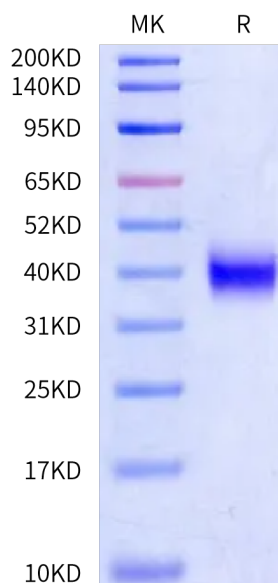
<b>Formulation</b>	Lyophilized from 0.22 µm filtered solution in 20mM HEPES, 150mM NaCl, 8% trehalose, 0.05% Brij-35 (pH 7.5).
<b>Reconstitution</b>	Dissolve the lyophilized protein in distilled water. Please refer to the Certificate of Analysis for detailed instructions.
<b>Storage</b>	-20 to -80°C for 12 months as supplied from date of receipt. -80°C for 3 months after reconstitution. Recommend to aliquot the protein into smaller quantities for optimal storage. Please minimize freeze-thaw cycles.

## Background

Human kallikrein 11 (hK11/trypsin-like serine protease/TLSP, encoded by the KLK11 gene) is a member of the kallikrein family of secreted serine proteases. Elevated serum hK11 levels were found in 60% of men with prostate cancer and 70% of women with ovarian cancer. Also, hK11 expression was found to be under the regulation of steroid hormones, particularly estrogens, at the level of KLK11 transcription.

## Assay Data

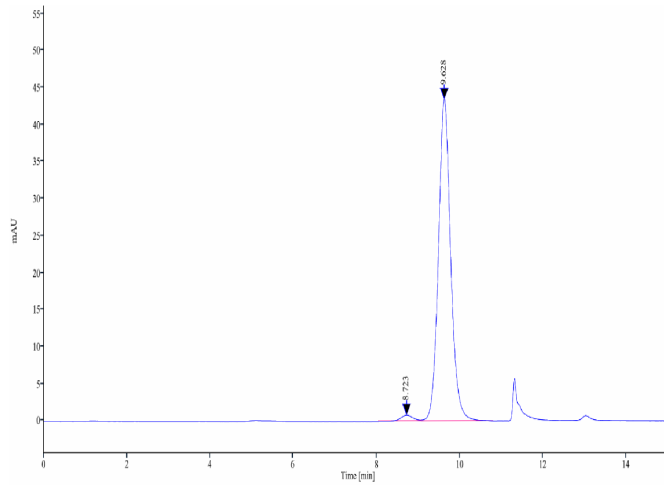
### Bis-Tris PAGE



Human Kallikrein 11 on Bis-Tris PAGE under reduced condition. The purity is greater than 95%.

### SEC-HPLC

### Assay Data



The purity of Human Kallikrein 11 is greater than 95% as determined by SEC-HPLC.

### Bioactivity Data

Measured by its ability to cleave the fluorogenic peptide substrate: N-carbobenzyloxy-Lys-ThioBenzyl ester (Z-Lys-SBzl), in the presence of 5,5'Dithio-bis (2-nitrobenzoic acid) (DTNB). The specific activity is > 1200pmol/min/ $\mu$ g.