

# Human Kallikrein 2/KLK2 Protein (pro form)

Cat. No. KLK-HM12P

## Description

<b>Source</b>	Recombinant Human Kallikrein 2/KLK2 Protein (pro form) is expressed from HEK293 with His tag at the C-terminus. The protein needs to be activated by Trypsin for an activated form. It contains Pro19-Pro261 with modified propeptide.
<b>Accession</b>	P20151-1
<b>Molecular Weight</b>	The protein has a predicted MW of 28.43 kDa. Due to glycosylation, the protein migrates to 28-38 kDa based on Bis-Tris PAGE result.
<b>Endotoxin</b>	Less than 0.1 EU per $\mu\text{g}$ by the LAL method.
<b>Purity</b>	> 95% as determined by Bis-Tris PAGE > 95% as determined by HPLC

## Formulation and Storage

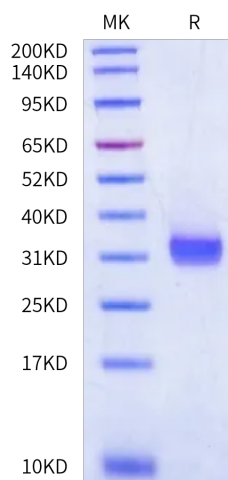
<b>Formulation</b>	Lyophilized from 0.22 $\mu\text{m}$ filtered solution in 20mM Tris, 150mM NaCl, 8% trehalose (pH 8.0).
<b>Reconstitution</b>	Dissolve the lyophilized protein in distilled water. Please refer to the Certificate of Analysis for detailed instructions.
<b>Storage</b>	-20 to -80°C for 12 months as supplied from date of receipt. -80°C for 3 months after reconstitution. Recommend to aliquot the protein into smaller quantities for optimal storage. Please minimize freeze-thaw cycles.

## Background

Kallikrein-related peptidase 2 (KLK2) is a serine protease exhibiting antiangiogenic properties through proteolytic activity. KLK2 is overexpressed in prostate cancer and plays a pivotal role in cancer progression, establishing it as a potential therapeutic target.

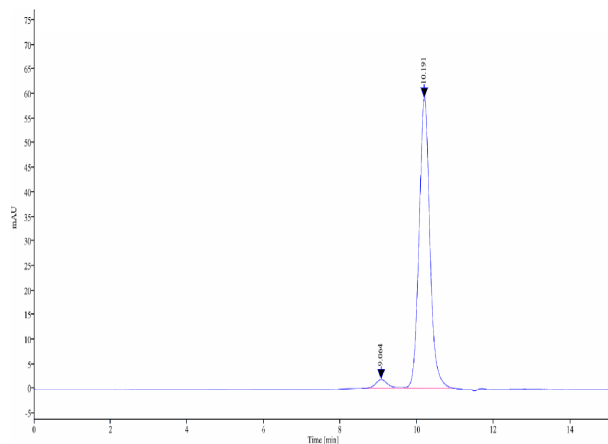
## Assay Data

### Bis-Tris PAGE



Human Kallikrein 2 on Bis-Tris PAGE under reduced condition. The purity is greater than 95%.

### SEC-HPLC



The purity of Human Kallikrein 2 is greater than 95% as determined by SEC-HPLC.

# Human Kallikrein 2/KLK2 Protein (pro form)

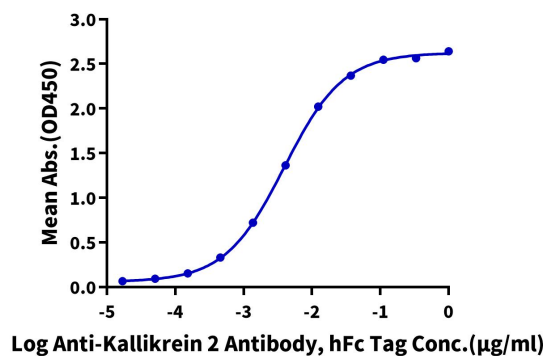
Cat. No. KLK-HM12P

## Assay Data

### ELISA Data

#### Human Kallikrein 2 (pro form), His Tag ELISA

0.05µg Human Kallikrein 2 (pro form), His Tag Per Well



Immobilized Human Kallikrein 2 (pro form), His Tag at 0.5µg/ml (100µl/well) on the plate. Dose response curve for Anti-Kallikrein 2 Antibody, hFc Tag with the EC50 of 3.9ng/ml determined by ELISA.

### Bioactivity Data

Measured by its ability to cleave the fluorogenic peptide substrate: PFR-AMC. The specific activity is >150 pmol/min/µg.