

# Biotinylated Human Kallikrein 3/PSA Protein (active form) (Primary Amine Labeling)



Cat. No. KLK-HM13AB

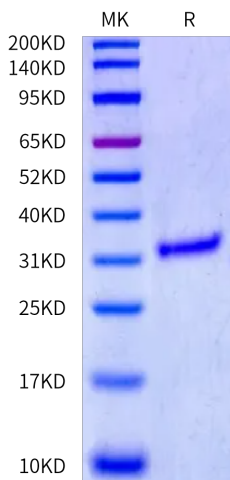
| Description      |  |
|------------------|--|
| Source           | Recombinant Biotinylated Human Kallikrein 3/PSA Protein (active form) (Primary Amine Labeling) is expressed from HEK293 with His tag at the C-terminus.<br>It contains Ile25-Pro261. |
| Accession        | P07288-1   |
| Molecular Weight | The protein has a predicted MW of 27.7 kDa. Due to glycosylation, the protein migrates to 31-38 kDa based on Bis-Tris PAGE result.   |
| Endotoxin        | Less than 0.1 EU per µg by the LAL method.   |
| Purity           | > 95% as determined by Bis-Tris PAGE<br>> 95% as determined by HPLC  |

| Formulation and Storage |   |
|-------------------------|---|
| Formulation             | Lyophilized from 0.22 µm filtered solution in 50mM Tris, 150mM NaCl, 8% trehalose, 0.05% Brij-35 (pH 7.5).  |
| Reconstitution          | Dissolve the lyophilized protein in distilled water. Please refer to the Certificate of Analysis for detailed instructions.   |
| Storage                 | -20 to -80°C for 12 months as supplied from date of receipt. -80°C for 3 months after reconstitution. Recommend to aliquot the protein into smaller quantities for optimal storage. Please minimize freeze-thaw cycles. |

**Background**  
Kallikrein-related peptidase 3 (KLK3), also known as prostate-specific antigen (PSA), is the most useful biomarker for prostate cancer (PCa). KLK3 is suggested to play a role in regulating cancer growth through anti-angiogenic activity in vivo and in vitro.

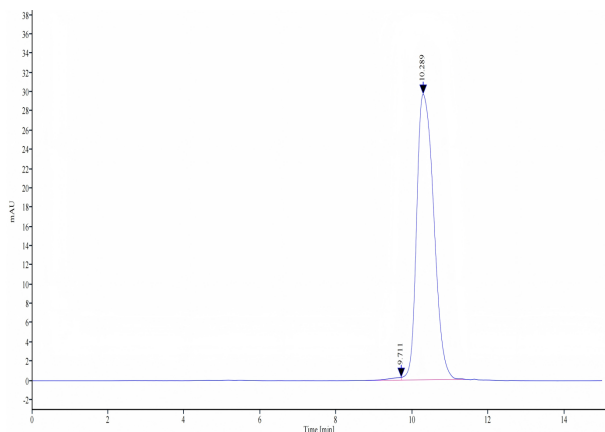
## Assay Data

### Bis-Tris PAGE



Biotinylated Human Kallikrein 3 on Bis-Tris PAGE under reduced condition. The purity is greater than 95%.

### SEC-HPLC



The purity of Biotinylated Human Kallikrein 3 is greater than 95% as determined by SEC-HPLC.

# Biotinylated Human Kallikrein 3/PSA Protein (active form) (Primary Amine Labeling)

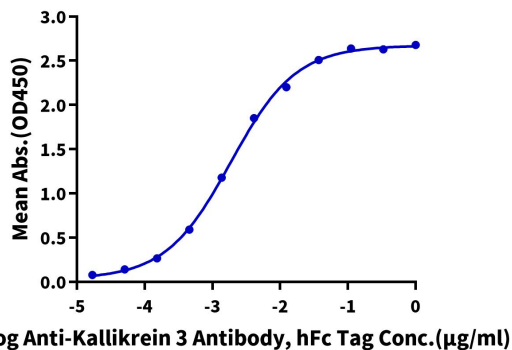
Cat. No. KLK-HM13AB

## Assay Data

### ELISA Data

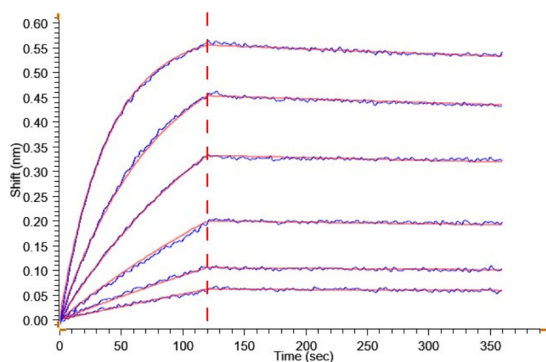
#### Biotinylated Human Kallikrein 3, His Tag ELISA

0.05µg Biotinylated Human Kallikrein 3, His Tag Per Well



Immobilized Biotinylated Human Kallikrein 3, His Tag at 0.5µg/ml (100µl/well) on the streptavidin precoated plate (5µg/ml). Dose response curve for Anti-Kallikrein 3 Antibody, hFc Tag with the EC50 of 1.9ng/ml determined by ELISA.

### BLI Data



Loaded Biotinylated Human Kallikrein 3 (active form), His Tag on Steptavidin-Biosensor can bind Anti-Kallikrein 3 Antibody, hFc Tag with an affinity constant of 0.14 nM as determined in BLI assay.

### Bioactivity Data

Measured by its ability to cleave the colorimetric peptide substrate, Succinyl-Arg-Pro-Tyr-p-Nitroanilide (Suc-RPY-pNA). The specific activity is >200 pmol/min/µg.