

Mouse KLKB1 Protein



Cat. No.    KLK-MM1B1

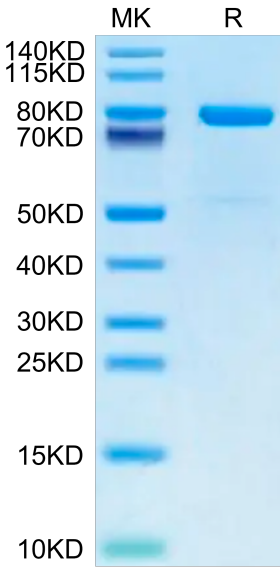
Description	
Source	Recombinant Mouse KLKB1 Protein is expressed from HEK293 with His tag at the C-Terminus. It contains Gly20-Ala638.
Accession	P26262
Molecular Weight	The protein has a predicted MW of 70.3 kDa. Due to glycosylation, the protein migrates to 75-85 kDa based on Bis-Tris PAGE result.
Endotoxin	Less than 1 EU per µg by the LAL method.
Purity	> 95% as determined by Bis-Tris PAGE > 95% as determined by HPLC

Formulation and Storage	
Formulation	Supplied as 0.22µm filtered solution in 20mM NaAc, 150mM NaCl (pH 5.0).
Storage	Valid for 12 months from date of receipt when stored at -80°C. Recommend to aliquot the protein into smaller quantities for optimal storage. Please minimize freeze-thaw cycles.

Background	
Plasma kallikrein, also known as Fletcher factor or kallikrein B1 (KLKB1), is a serine endopeptidase, like its homologs tissue kallikrein and kallikrein-related peptidases (KLKs). Its physiological role is to catalyze the release of kinins and other vasoactive peptides.	

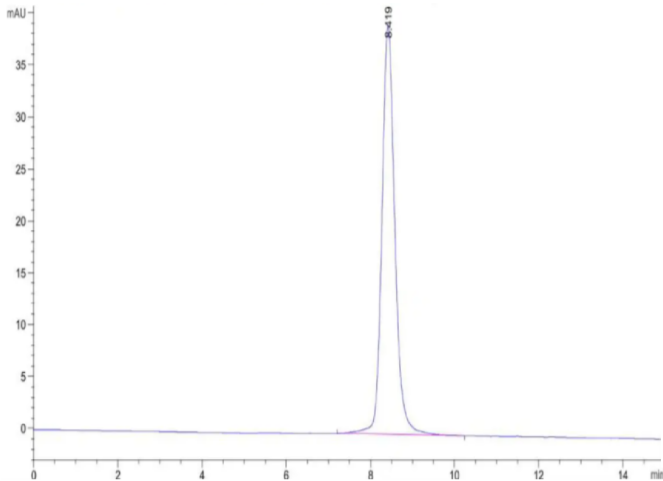
Assay Data

Bis-Tris PAGE



Mouse KLKB1 on Bis-Tris PAGE under reduced condition. The purity is greater than 95%.

SEC-HPLC



The purity of Mouse KLKB1 is greater than 95% as determined by SEC-HPLC.