

Rat Kallikrein 2/KLK2 Protein

Cat. No. KLK-RM102

Description

Source	Recombinant Rat Kallikrein 2/KLK2 Protein is expressed from HEK293 with His tag at the C-terminus. It contains Ile25-Pro259.
Accession	P00759
Molecular Weight	The protein has a predicted MW of 27.27 kDa. Due to glycosylation, the protein migrates to 35-45 kDa based on Bis-Tris PAGE result.
Endotoxin	Less than 0.1 EU per µg by the LAL method.
Purity	> 95% as determined by Bis-Tris PAGE > 95% as determined by HPLC

Formulation and Storage

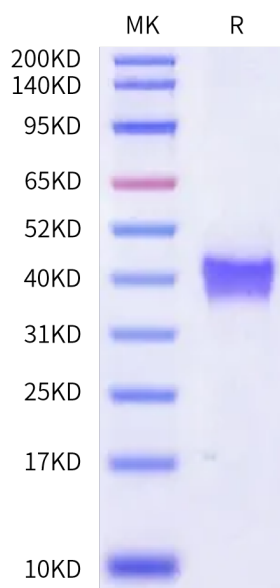
Formulation	Lyophilized from 0.22 µm filtered solution in 20mM Tris, 150mM NaCl, 8% trehalose (pH 8.0).
Reconstitution	Dissolve the lyophilized protein in distilled water. Please refer to the Certificate of Analysis for detailed instructions.
Storage	-20 to -80°C for 12 months as supplied from date of receipt. -80°C for 3 months after reconstitution. Recommend to aliquot the protein into smaller quantities for optimal storage. Please minimize freeze-thaw cycles.

Background

Kallikrein-related peptidase 2 (KLK2) is a serine protease exhibiting antiangiogenic properties through proteolytic activity. KLK2 is overexpressed in prostate cancer and plays a pivotal role in cancer progression, establishing it as a potential therapeutic target.

Assay Data

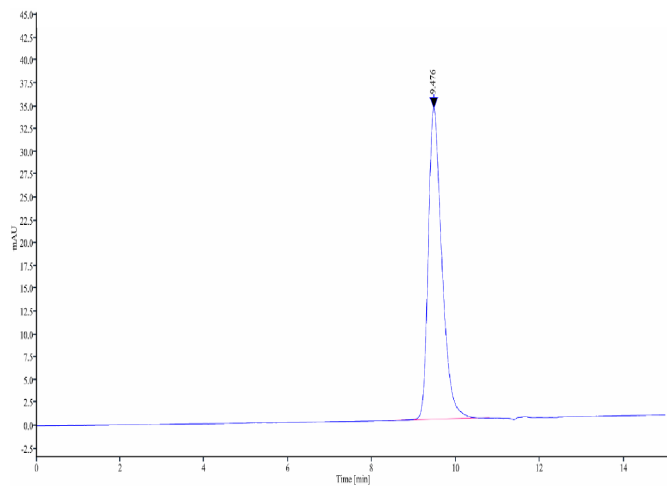
Bis-Tris PAGE



Rat Kallikrein 2 on Bis-Tris PAGE under reduced condition. The purity is greater than 95%.

SEC-HPLC

Assay Data



The purity of Rat Kallikrein 2 is greater than 95% as determined by SEC-HPLC.