

Canine keratin, type I cytoskeletal 19 Protein

Cat. No. KRN-DE119

| Description | |
|------------------|---|
| Source | Recombinant Canine keratin, type I cytoskeletal 19 Protein is expressed from E.coli with His tag at the N-Terminus. It contains Thr2-Leu399. |
| Accession | NP_001240671.1 |
| Molecular Weight | The protein has a predicted MW of 44.98 kDa. The protein migrates to 48-52 kDa based on Bis-Tris PAGE result. |
| Endotoxin | Less than 1EU per µg by the LAL method. |
| Purity | > 95% as determined by Bis-Tris PAGE |

Formulation and Storage

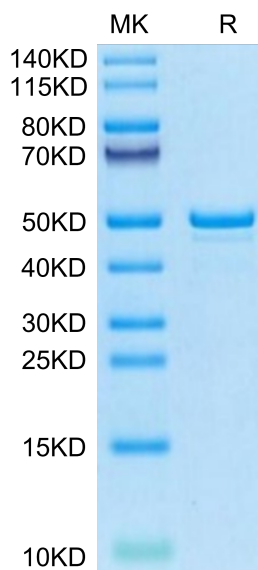
| | |
|-------------|--|
| Formulation | Supplied as 0.22µm filtered solution in PBS, 0.2%SKL (pH 7.4). |
| Storage | Valid for 12 months from date of receipt when stored at -80°C. Recommend to aliquot the protein into smaller quantities for optimal storage. Please minimize freeze-thaw cycles. |

Background

Keratin 19 (K19) belongs to the keratin family of proteins, which maintains structural integrity of epithelia. In cancer, K19 is highly expressed in several types where it serves as a diagnostic marker.

Assay Data

Bis-Tris PAGE



Canine keratin, type I cytoskeletal 19 on Bis-Tris PAGE under reduced condition. The purity is greater than 95%.