

Canine keratin, type I cytoskeletal 19 (310-399) Protein

Cat. No. KRN-DE19D

Description

Source	Recombinant Canine keratin, type I cytoskeletal 19(310-399) Protein is expressed from E.coli with His tag at the N-Terminus. It contains Gln310-Leu399.
Accession	NP_001240671.1
Molecular Weight	The protein has a predicted MW of 21.84 kDa same as Tris-Bis PAGE result.
Endotoxin	Less than 1EU per µg by the LAL method.
Purity	> 95% as determined by Tris-Bis PAGE > 95% as determined by HPLC

Formulation and Storage

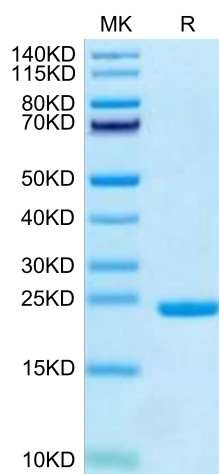
Formulation	Lyophilized from 0.22µm filtered solution in PBS (pH 7.4). Normally 8% trehalose is added as protectant before lyophilization.
Reconstitution	Centrifuge the tube before opening. Reconstituting to a concentration more than 100 µg/ml is recommended. Dissolve the lyophilized protein in distilled water.
Storage	-20 to -80°C for 12 months as supplied from date of receipt. -20 to -80°C for 3-6 months in unopened state after reconstitution. 2-8°C for 2-7 days after reconstitution. Recommend to aliquot the protein into smaller quantities for optimal storage. Please minimize freeze-thaw cycles.

Background

Keratin 19 (K19) belongs to the keratin family of proteins, which maintains structural integrity of epithelia. In cancer, K19 is highly expressed in several types where it serves as a diagnostic marker.

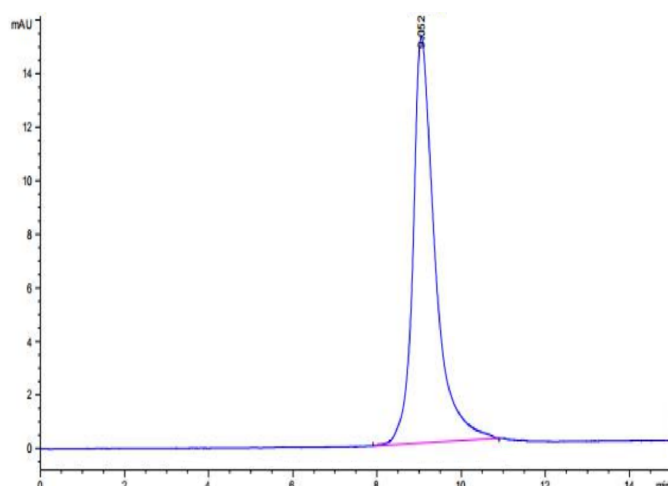
Assay Data

Tris-Bis PAGE



Canine keratin, type I cytoskeletal 19 (310-399) on Tris-Bis PAGE under reduced condition. The purity is greater than 95%.

SEC-HPLC



The purity of Canine keratin, type I cytoskeletal 19 (310-399) is greater than 95% as determined by SEC-HPLC.