

Huma LAIR2/CD306 Protein

Cat. No. LAI-HM4R2

Description

Source	Recombinant Huma LAIR2/CD306 Protein is expressed from Expi293 with His tag and Avi tag at the C-terminal. It contains Gln22-Pro152.
Accession	Q6ISS4-1
Molecular Weight	The protein has a predicted MW of 17 kDa. Due to glycosylation, the protein migrates to 20-25 kDa based on Tris-Bis PAGE result.
Endotoxin	Less than 1EU per µg by the LAL method.
Purity	> 95% as determined by Tris-Bis PAGE > 95% as determined by HPLC

Formulation and Storage

Formulation	Lyophilized from 0.22µm filtered solution in PBS (pH 7.4). Normally 5% trehalose is added as protectant before lyophilization.
Reconstitution	Centrifuge tubes before opening. Reconstituting to a concentration more than 100 µg/ml is recommended (usually we use 1mg/ml solution for lyophilization). Dissolve the lyophilized protein in distilled water.
Storage	-20 to -80°C for 12 months as supplied from date of receipt. -20 to -80°C for 3-6 months in unopened state after reconstitution. 2-8°C for 2-7 days after reconstitution. Recommend to aliquot the protein into smaller quantities for optimal storage. Please avoid freeze-thaw cycles.

Background

The leukocyte-associated immunoglobulin-like receptor 2 (LAIR2) shows increased expression during pregnancy and its reduced expression is associated with pregnancy complications. Although LAIR2 was expressed in the human placenta villus and decidua in the first trimester of pregnancy, it was not expressed in mouse tissues. Knockdown of LAIR2 markedly improved cell viability and inhibited the invasive ability of HTR8/SVneo cells.

Assay Data

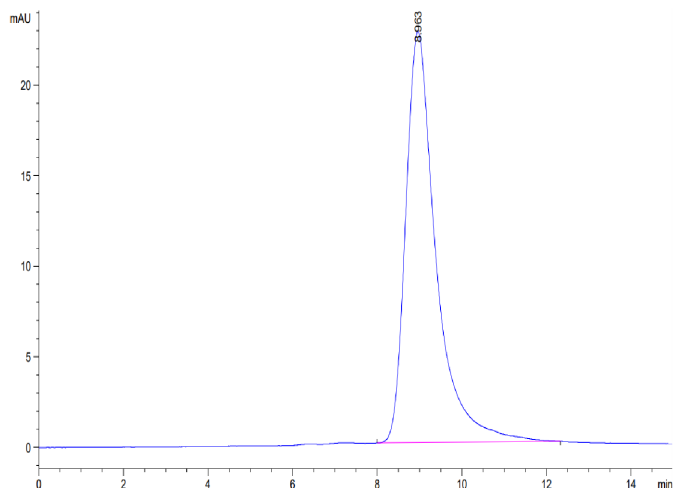
Tris-Bis PAGE



Huma LAIR2 on Tris-Bis PAGE under reduced condition. The purity is greater than 95%.

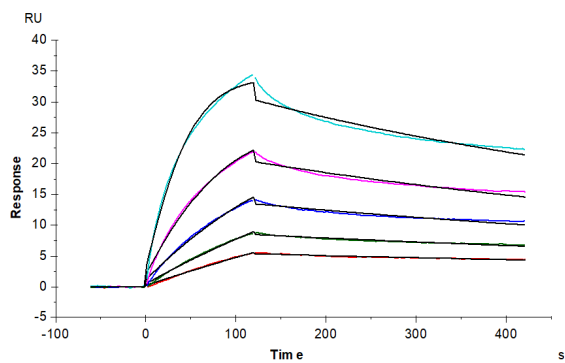
SEC-HPLC

Assay Data



The purity of Huma LAIR2 is greater than 95% as determined by SEC-HPLC.

SPR Data



Human LAIR2, His Tag captured on CM5 Chip via Anti-His Antibody can bind Native Human Collagen I protein with an affinity constant of 0.95 nM as determined in SPR assay (Biacore T200).