

# Human L1CAM Protein

Cat. No. LAM-HM101



## Description

|                         |   |
|-------------------------|---|
| <b>Source</b>           | Recombinant Human L1CAM Protein is expressed from HEK293 with His tag at the C-Terminus.<br>It contains Ile20-Glu1120.                |
| <b>Accession</b>        | P32004-1  |
| <b>Molecular Weight</b> | The protein has a predicted MW of 124.6 kDa. Due to glycosylation, the protein migrates to 150-180 kDa based on Bis-Tris PAGE result. |
| <b>Endotoxin</b>        | Less than 1EU per µg by the LAL method.   |
| <b>Purity</b>           | > 95% as determined by Bis-Tris PAGE<br>> 95% as determined by HPLC   |

## Formulation and Storage

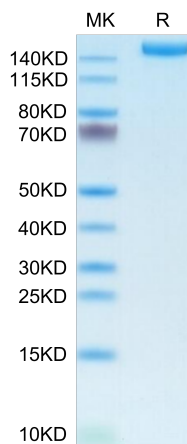
|                       |   |
|-----------------------|---|
| <b>Formulation</b>    | Lyophilized from 0.22µm filtered solution in PBS (pH 7.4). Normally 8% trehalose is added as protectant before lyophilization.  |
| <b>Reconstitution</b> | Centrifuge the tube before opening. Reconstituting to a concentration more than 100 µg/ml is recommended. Dissolve the lyophilized protein in distilled water.  |
| <b>Storage</b>        | -20 to -80°C for 12 months as supplied from date of receipt. -80°C for 3 months after reconstitution. Recommend to aliquot the protein into smaller quantities for optimal storage. Please minimize freeze-thaw cycles. |

## Background

L1 cell adhesion molecule (L1CAM) is one of the first neural adhesion molecules described with important functions in the development of the nervous system. Subsequent work discovered that L1CAM is expressed in many human cancers and is often associated with bad prognosis. This is most likely due to the motility and invasion promoting function of L1CAM. L1CAM is a valuable diagnostic/prognostic marker and an attractive target for the therapy of several human cancers.

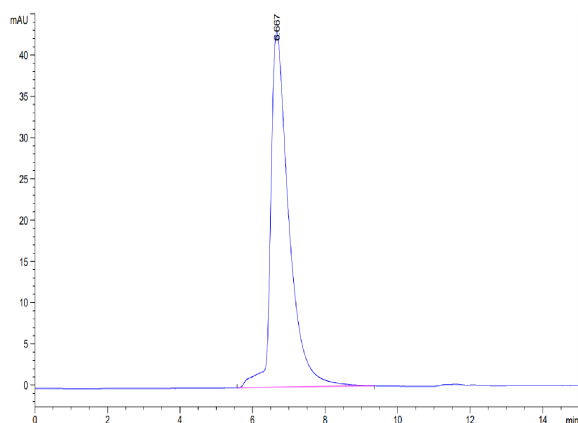
## Assay Data

### Bis-Tris PAGE



Human L1CAM on Bis-Tris PAGE under reduced condition. The purity is greater than 95%.

### SEC-HPLC



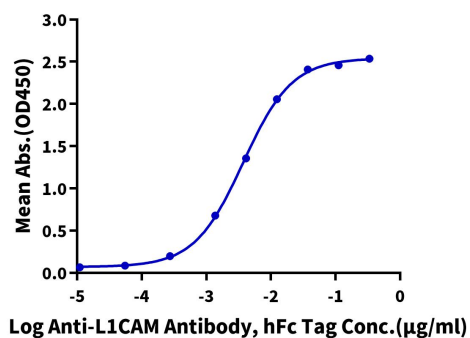
The purity of Human L1CAM is greater than 95% as determined by SEC-HPLC.

Assay Data

ELISA Data

**Human L1CAM, His Tag ELISA**

0.02µg Human L1CAM, His Tag Per Well



Immobilized Human L1CAM, His Tag at 0.2µg/ml (100µl/well) on the plate. Dose response curve for Anti-L1CAM Antibody, hFc Tag with the EC50 of 3.7ng/ml determined by ELISA.