

Cynomolgus LDLR Protein

Cat. No. LDL-CM101



Description

| | |
|-------------------------|--|
| Source | Recombinant Cynomolgus LDLR Protein is expressed from HEK293 with His tag at the C-Terminus. It contains Ala22-Gly788. |
| Accession | XP_005588053.1 |
| Molecular Weight | The protein has a predicted MW of 86 kDa, Due to glycosylation, the protein migrates to 115-130 kDa based on Bis-Tris PAGE result. |
| Endotoxin | Less than 1EU per µg by the LAL method. |
| Purity | > 95% as determined by Bis-Tris PAGE > 95% as determined by HPLC |

Formulation and Storage

| | |
|-----------------------|---|
| Formulation | Lyophilized from 0.22µm filtered solution in PBS (pH 7.4). Normally 8% trehalose is added as protectant before lyophilization. |
| Reconstitution | Centrifuge the tube before opening. Reconstituting to a concentration more than 100 µg/ml is recommended. Dissolve the lyophilized protein in distilled water. |
| Storage | -20 to -80°C for 12 months as supplied from date of receipt. -80°C for 3 months after reconstitution. Recommend to aliquot the protein into smaller quantities for optimal storage. Please minimize freeze-thaw cycles. |

Background

The low density lipoprotein receptor (LDLR) is the founding member of the LDL R family of widely expressed cell surface scavenger receptors. It is a cell-surface receptor that recognizes the apoprotein B100 which is embedded in the phospholipid outer layer of LDL particles.

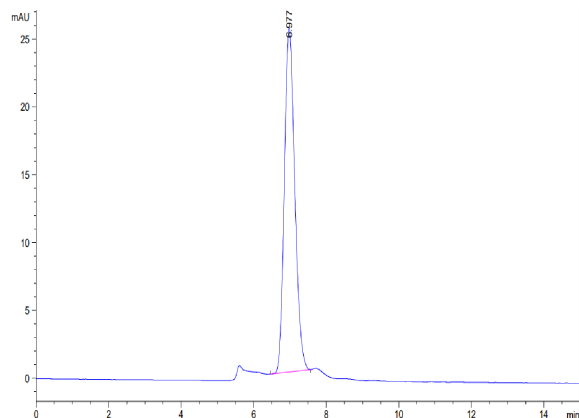
Assay Data

Bis-Tris PAGE



Cynomolgus LDLR on Bis-Tris PAGE under reduced condition. The purity is greater than 95%.

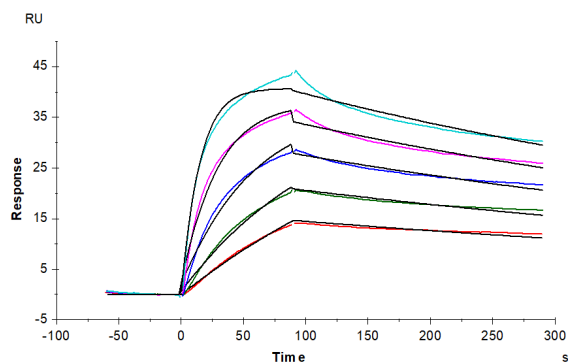
SEC-HPLC



The purity of Cynomolgus LDLR is greater than 95% as determined by SEC-HPLC.

Assay Data

SPR Data



Cynomolgus LDLR, His Tag immobilized on CM5 Chip can bind Cynomolgus PCSK9, His Tag with an affinity constant of 0.27 nM as determined in SPR assay (Biacore T200).