

Human LDLR Protein

Cat. No. LDL-HM401



Description

Source	Recombinant Human LDLR Protein is expressed from HEK293 with His tag and Avi tag at the C-Terminus. It contains Ala22-Arg788.
Accession	P01130-1
Molecular Weight	The protein has a predicted MW of 87.6 kDa, Due to glycosylation, the protein migrates to 110-130 kDa based on Bis-Tris PAGE result.
Endotoxin	Less than 1EU per µg by the LAL method.
Purity	> 95% as determined by Bis-Tris PAGE > 95% as determined by HPLC

Formulation and Storage

Formulation	Supplied as 0.22µm filtered solution in PBS (pH 7.4).
Storage	Valid for 12 months from date of receipt when stored at -80°C. Recommend to aliquot the protein into smaller quantities for optimal storage. Please minimize freeze-thaw cycles.

Background

The low density lipoprotein receptor (LDLR) is the founding member of the LDL R family of widely expressed cell surface scavenger receptors. It is a cell-surface receptor that recognizes the apoprotein B100 which is embedded in the phospholipid outer layer of LDL particles.

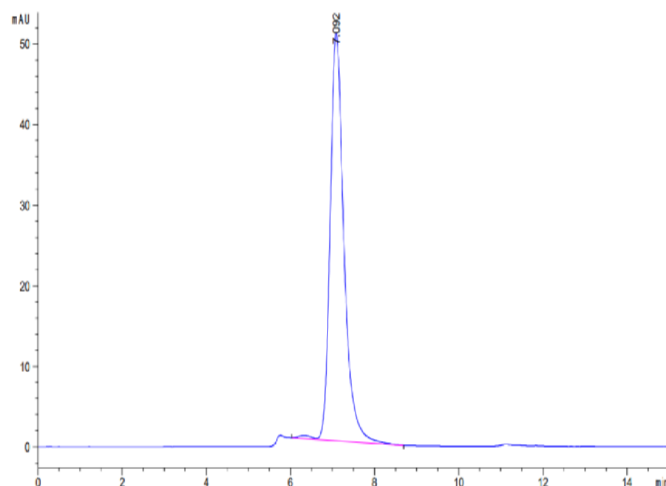
Assay Data

Bis-Tris PAGE



Human LDLR on Bis-Tris PAGE under reduced condition. The purity is greater than 95%.

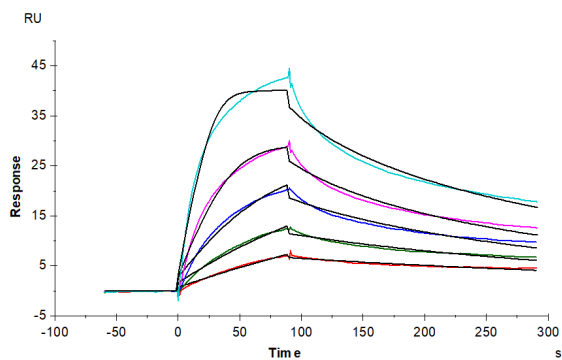
SEC-HPLC



The purity of Human LDLR is greater than 95% as determined by SEC-HPLC.

Assay Data

SPR Data



Human LDLR, His Tag immobilized on CM5 Chip can bind Human PCSK9, His Tag with an affinity constant of 0.35 nM as determined in SPR assay (Biacore T200).