

Cynomolgus LILRB1/CD85j/ILT2 Protein

Cat. No. LIL-CM1B5

Description	
Source	Recombinant Cynomolgus LILRB1/CD85j/ILT2 Protein is expressed from Expi293 with His tag at the C-terminal. It contains Gly41-His474.
Accession	XP_045236898.1
Molecular Weight	The protein has a predicted MW of 48.19 kDa. Due to glycosylation, the protein migrates to 60-80 kDa based on Tris-Bis PAGE result.
Endotoxin	Less than 1EU per µg by the LAL method.
Purity	> 95% as determined by Tris-Bis PAGE > 95% as determined by HPLC

Formulation and Storage

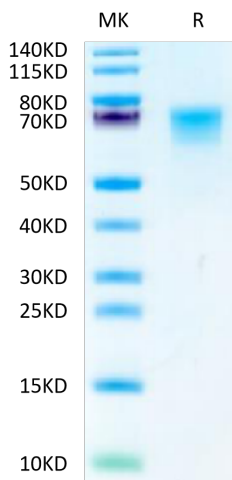
Formulation	Supplied as 0.22µm filtered solution in PBS (pH 7.4).
Storage	Valid for 12 months from date of receipt when stored at -80°C. Recommend to aliquot the protein into smaller quantities for optimal storage. Please do not repeated freeze-thaw cycles.

Background

LILRB1, also known as CD85j and ILT2, is a 110 kDa transmembrane glycoprotein in the LILR immunoregulatory protein family. Mature human LILRB1 consists of a 438 amino acid (aa) extracellular domain (ECD) with 4 tandem Ig-like domains, a 21 aa transmembrane segment, and a 168 aa cytoplasmic domain with 4 inhibitory ITIM motifs. LILRB1 is a receptor for class I MHC antigens. Recognizes a broad spectrum of HLA-A, HLA-B, HLA-C, HLA-G and HLA-F alleles. Receptor for H301/UL18, a human cytomegalovirus class I MHC homolog. Ligand binding results in inhibitory signals and down-regulation of the immune response.

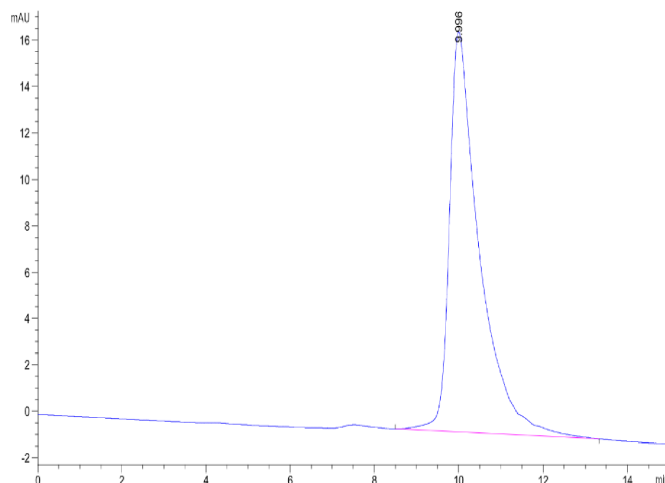
Assay Data

Tris-Bis PAGE



Cynomolgus LILRB1 on Tris-Bis PAGE under reduced condition. The purity is greater than 95%.

SEC-HPLC



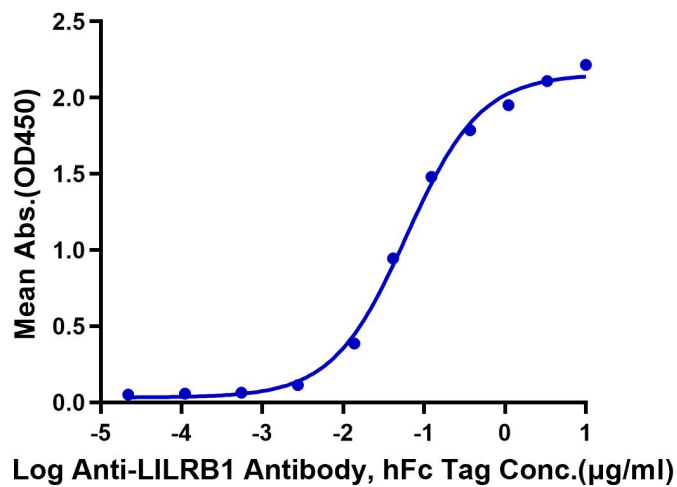
The purity of Cynomolgus LILRB1 is greater than 95% as determined by SEC-HPLC.

Assay Data

ELISA Data

Cynomolgus LILRB1, His Tag ELISA

0.05µg Cynomolgus LILRB1, His Tag Per Well



Immobilized Cynomolgus LILRB1, His Tag at 0.5µg/ml (100µl/well) on the plate. Dose response curve for Anti-LILRB1 Antibody, hFc Tag with the EC50 of 60.8ng/ml determined by ELISA.