

Cynomolgus LILRB1/CD85j/ILT2 Protein

Cat. No. LIL-CM1RB

Description

Source	Recombinant Cynomolgus LILRB1/CD85j/ILT2 Protein is expressed from HEK293 with His tag at the C-Terminus. It contains Gly41-His474.
Accession	XP_045236898.1
Molecular Weight	The protein has a predicted MW of 48.19 kDa. Due to glycosylation, the protein migrates to 60-80 kDa based on Tris-Bis PAGE result.
Endotoxin	Less than 1EU per µg by the LAL method.
Purity	> 95% as determined by Tris-Bis PAGE > 95% as determined by HPLC

Formulation and Storage

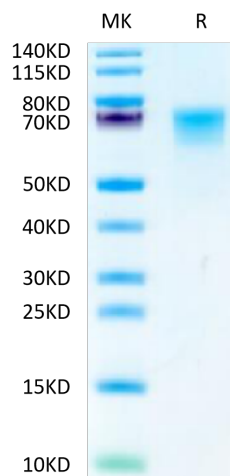
Formulation	Lyophilized from 0.22µm filtered solution in PBS (pH 7.4). Normally 8% trehalose is added as protectant before lyophilization.
Reconstitution	Centrifuge the tube before opening. Reconstituting to a concentration more than 100 µg/ml is recommended. Dissolve the lyophilized protein in distilled water.
Storage	-20 to -80°C for 12 months as supplied from date of receipt. -20 to -80°C for 3-6 months in unopened state after reconstitution. 2-8°C for 2-7 days after reconstitution. Recommend to aliquot the protein into smaller quantities for optimal storage. Please minimize freeze-thaw cycles.

Background

LILRB1, also known as CD85j and ILT2, is a 110 kDa transmembrane glycoprotein in the LILR immunoregulatory protein family. Mature human LILRB1 consists of a 438 amino acid (aa) extracellular domain (ECD) with 4 tandem Ig-like domains, a 21 aa transmembrane segment, and a 168 aa cytoplasmic domain with 4 inhibitory ITIM motifs. LILRB1 is a receptor for class I MHC antigens. Recognizes a broad spectrum of HLA-A, HLA-B, HLA-C, HLA-G and HLA-F alleles. Receptor for H301/UL18, a human cytomegalovirus class I MHC homolog. Ligand binding results in inhibitory signals and down-regulation of the immune response.

Assay Data

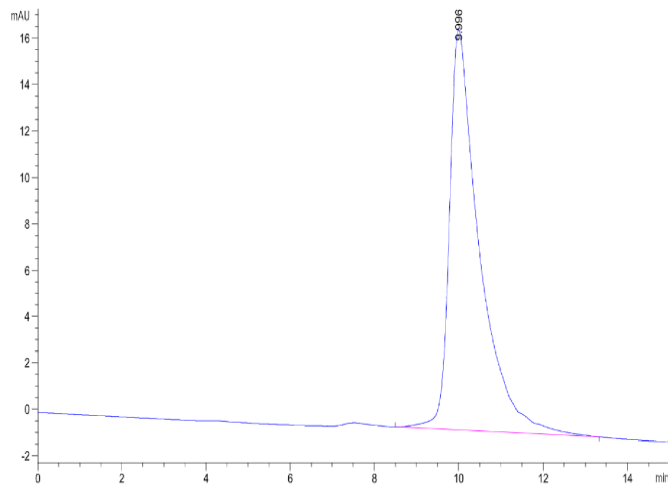
Tris-Bis PAGE



Cynomolgus LILRB1 on Tris-Bis PAGE under reduced condition. The purity is greater than 95%.

SEC-HPLC

Assay Data

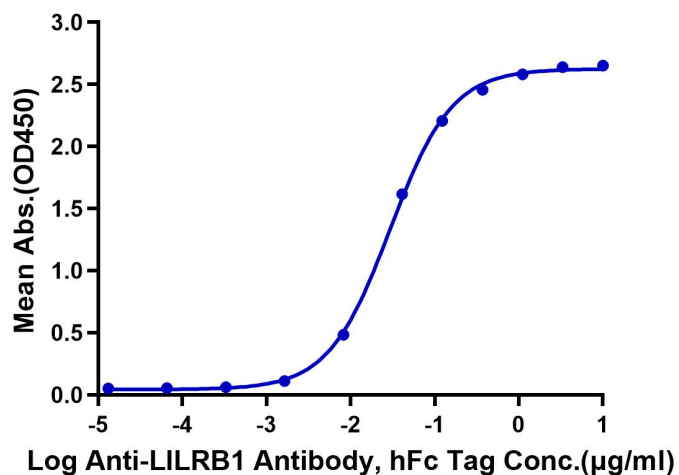


The purity of Cynomolgus LILRB1 is greater than 95% as determined by SEC-HPLC.

ELISA Data

Cynomolgus LILRB1, His Tag ELISA

0.2µg Cynomolgus LILRB1, His Tag Per Well



Immobilized Cynomolgus LILRB1, His Tag at 2µg/ml (100µl/well) on the plate. Dose response curve for Anti-LILRB1 Antibody, hFc Tag with the EC50 of 29.6ng/ml determined by ELISA.