

Rhesus macaque LILRB1/CD85j/ILT2 Protein

Cat. No. LIL-CM2B3

Description

Source	Recombinant Rhesus macaque LILRB1/CD85j/ILT2 Protein is expressed from HEK293 with hFc tag at the C-Terminus. It contains Met1-His474.
Accession	NP_001035762.2
Molecular Weight	The protein has a predicted MW of 75.2 kDa. Due to glycosylation, the protein migrates to 80-90 kDa based on Tris-Bis PAGE result.
Endotoxin	Less than 1EU per µg by the LAL method.
Purity	> 95% as determined by Tris-Bis PAGE > 95% as determined by HPLC

Formulation and Storage

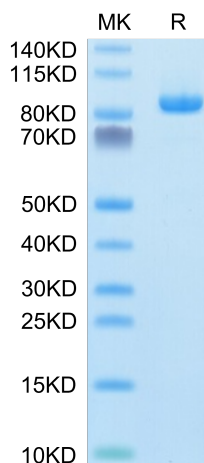
Formulation	Lyophilized from 0.22µm filtered solution in PBS (pH 7.4). Normally 8% trehalose is added as protectant before lyophilization.
Reconstitution	Centrifuge the tube before opening. Reconstituting to a concentration more than 100 µg/ml is recommended. Dissolve the lyophilized protein in distilled water.
Storage	-20 to -80°C for 12 months as supplied from date of receipt. -20 to -80°C for 3-6 months in unopened state after reconstitution. 2-8°C for 2-7 days after reconstitution. Recommend to aliquot the protein into smaller quantities for optimal storage. Please minimize freeze-thaw cycles.

Background

LILRB1, also known as CD85j and ILT2, is a 110 kDa transmembrane glycoprotein in the LILR immunoregulatory protein family. Mature human LILRB1 consists of a 438 amino acid (aa) extracellular domain (ECD) with 4 tandem Ig-like domains, a 21 aa transmembrane segment, and a 168 aa cytoplasmic domain with 4 inhibitory ITIM motifs. LILRB1 is a receptor for class I MHC antigens. Recognizes a broad spectrum of HLA-A, HLA-B, HLA-C, HLA-G and HLA-F alleles. Receptor for H301/UL18, a human cytomegalovirus class I MHC homolog. Ligand binding results in inhibitory signals and down-regulation of the immune response.

Assay Data

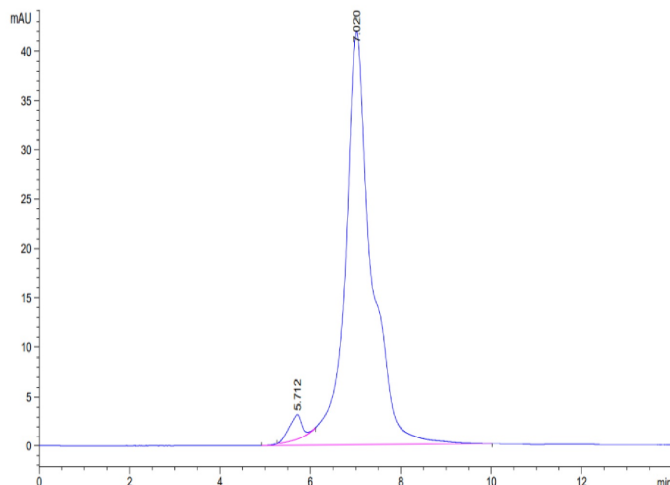
Tris-Bis PAGE



Rhesus macaque LILRB1 on Tris-Bis PAGE under reduced condition. The purity is greater than 95%.

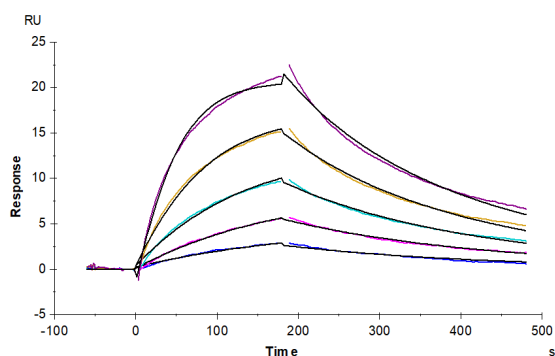
SEC-HPLC

Assay Data



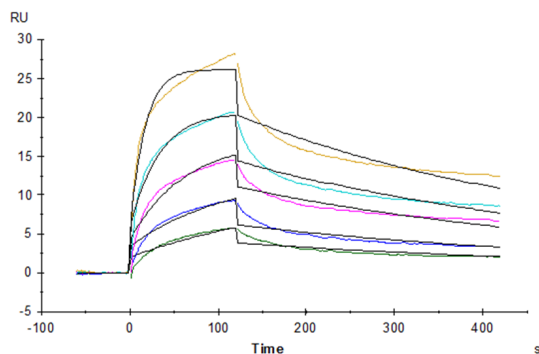
The purity of Rhesus macaque LILRB1 is greater than 95% as determined by SEC-HPLC.

SPR Data



Anti-LILRB1 Antibody immobilized on CM5 Chip can bind Rhesus macaque LILRB1, hFc Tag with an affinity constant of 47.69 nM as determined in SPR assay (Biacore T200) (QC Test).

SPR Data



Rhesus macaque LILRB1, hFc Tag captured on CM5 Chip via Protein A can bind Rhesus macaque HLA-G Complex Tetramer, His Tag with an affinity constant of 1.74 nM as determined in SPR assay (Biacore T200).