

Human LPAR1/LPA receptor 1 Protein-VLP

Cat. No. LPA-HM0P111

Description

Source	Recombinant Human LPAR1/LPA receptor 1 Protein-VLP is expressed from HEK293. It contains Met1-Val364.
Accession	Q92633-1
Molecular Weight	The target protein has a predicted MW of 43.1 kDa.
Endotoxin	Less than 1EU per µg by the LAL method.
Purity	>90% as determined by HPLC

Formulation and Storage

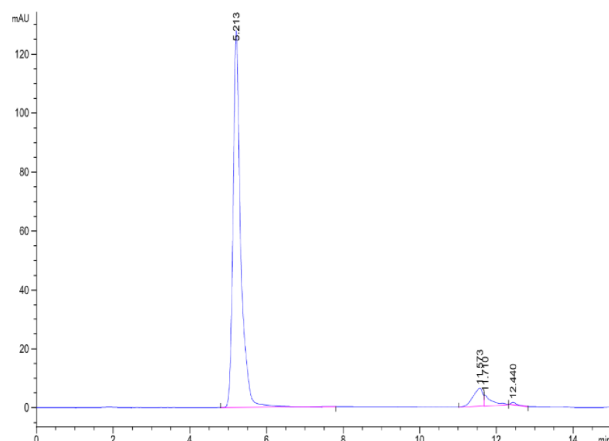
Formulation	Supplied as 0.22µm filtered solution in PBS, 150mM L-Arginine (pH 7.4). Notice: If you need it for immunization, water-soluble adjuvant is recommended.
Storage	Valid for 12 months from date of receipt when stored at -80°C. Recommend to aliquot the protein into smaller quantities for optimal storage. Please minimize freeze-thaw cycles.

Background

Lysophosphatidic acid receptor 1 (LPAR1) is one of the G protein-coupled receptors and binds with lysophosphatidic acid (LPA). It is involved in diverse biological functions, including chemotaxis, proliferation, cell differentiation, platelet aggregation, and tumor progression. A set of papers indicated that LPAR1 is a prognostic biomarker in various cancers and takes an important part in the development of prostate cancer.

Assay Data

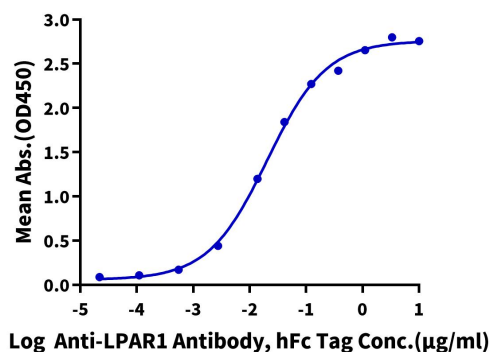
SEC-HPLC



The purity of Human LPAR1 VLP is greater than 90% as determined by SEC-HPLC.

ELISA Data

Human LPAR1 VLP ELISA
0.5µg Human LPAR1 VLP Per Well



Immobilized Human LPAR1 VLP at 5µg/ml (100µl/well) on the plate. Dose response curve for Anti-LPAR1 Antibody, hFc Tag with the EC50 of 20.4ng/ml determined by ELISA (QC Test).