

Human LYPD3 Protein

Cat. No. LPD-HM103

Description

Source	Recombinant Human LYPD3 Protein is expressed from HEK293 with His tag at the C-Terminus. It contains Leu31-His286.
Accession	O95274
Molecular Weight	The protein has a predicted MW of 27.8 kDa. Due to glycosylation, the protein migrates to 60-70 kDa based on Bis-Tris PAGE result.
Endotoxin	Less than 1EU per µg by the LAL method.
Purity	> 95% as determined by Bis-Tris PAGE > 95% as determined by HPLC

Formulation and Storage

Formulation	Lyophilized from 0.22µm filtered solution in PBS (pH 7.4). Normally 8% trehalose is added as protectant before lyophilization.
Reconstitution	Centrifuge the tube before opening. Reconstituting to a concentration more than 100 µg/ml is recommended. Dissolve the lyophilized protein in distilled water.
Storage	-20 to -80°C for 24 months as supplied from date of receipt. -80°C for 3-6 months after reconstitution. 2-8°C for 2-7 days after reconstitution. Recommend to aliquot the protein into smaller quantities for optimal storage. Please minimize freeze-thaw cycles.

Background

Aberrant expression of LYPD3 plays an oncogenic role in several types of cancer. LYPD3 was highly expressed in LUAD tumor compared with paracancerous tissues. Furthermore, the expression of LYPD3 was able to be regulated by the methylation in LYPD3 promoter region, which was positively associated with the overall survival. LYPD3 might affect the clinical manifestations of LUAD by regulating the P53 signaling pathway.

Assay Data

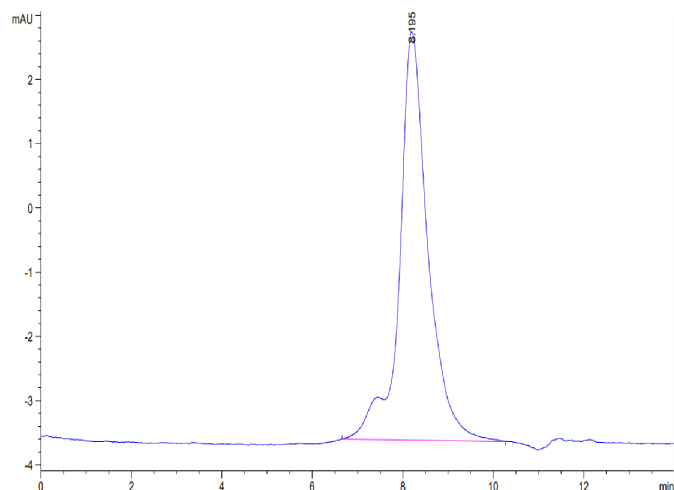
Bis-Tris PAGE



Human LYPD3 on Bis-Tris PAGE under reduced condition. The purity is greater than 95%.

SEC-HPLC

Assay Data

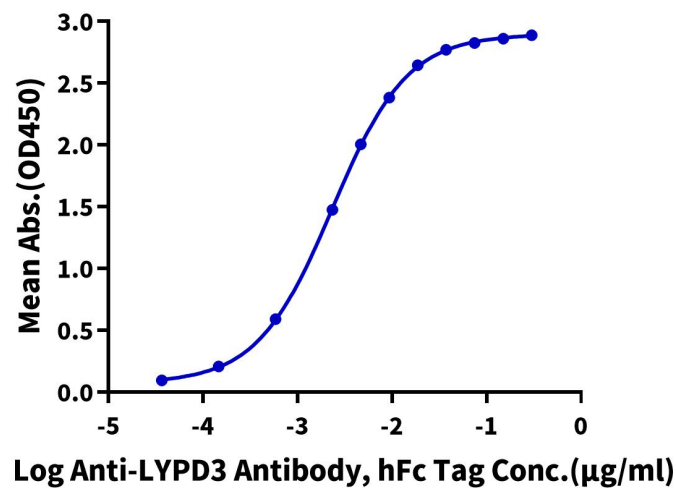


The purity of Human LYPD3 is greater than 95% as determined by SEC-HPLC.

ELISA Data

Human LYPD3, His Tag ELISA

0.1µg Human LYPD3, His Tag Per Well



Immobilized Human LYPD3, His Tag at 1µg/ml (100µl/Well) on the plate. Dose response curve for Anti-LYPD3 Ab., hFc Tag with the EC50 of 2.3ng/ml determined by ELISA (QC Test).