

Mouse LYPD3 Protein

Cat. No. LPD-MM103

Description

Source	Recombinant Mouse LYPD3 Protein is expressed from HEK293 with His tag at the C-Terminus. It contains Leu33-His287.
Accession	Q91YK8
Molecular Weight	The protein has a predicted MW of 27.6 kDa. Due to glycosylation, the protein migrates to 70-80 kDa based on Tris-Bis PAGE result.
Endotoxin	Less than 1EU per μg by the LAL method.
Purity	> 95% as determined by Tris-Bis PAGE > 95% as determined by HPLC

Formulation and Storage

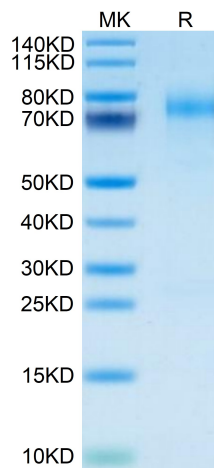
Formulation	Lyophilized from 0.22 μm filtered solution in PBS (pH 7.4). Normally 8% trehalose is added as protectant before lyophilization.
Reconstitution	Centrifuge the tube before opening. Reconstituting to a concentration more than 100 $\mu\text{g}/\text{ml}$ is recommended. Dissolve the lyophilized protein in distilled water.
Storage	-20 to -80°C for 12 months as supplied from date of receipt. -20 to -80°C for 3-6 months in unopened state after reconstitution. 2-8°C for 2-7 days after reconstitution. Recommend to aliquot the protein into smaller quantities for optimal storage. Please minimize freeze-thaw cycles.

Background

Aberrant expression of LYPD3 plays an oncogenic role in several types of cancer. LYPD3 was able to be regulated by the methylation in LYPD3 promoter region, which was positively associated with the overall survival. Furthermore, we explored the related pathways through which LYPD3 affects the pathogenesis and prognosis of LUAD by gene set enrichment analysis, and found that LYPD3 might affect the clinical manifestations of LUAD by regulating the P53 signaling pathway.

Assay Data

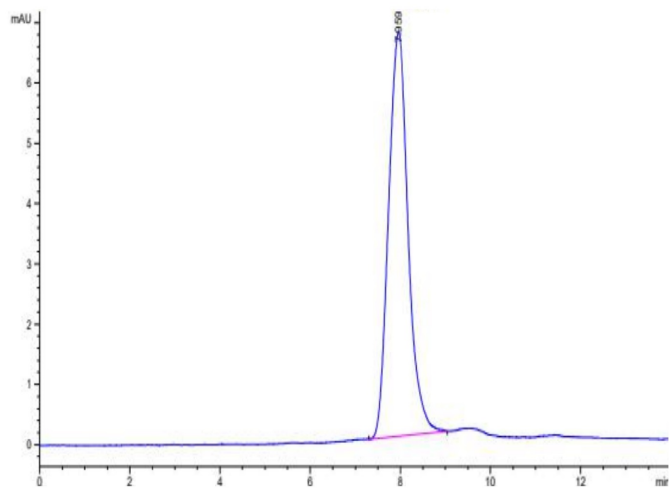
Tris-Bis PAGE



Mouse LYPD3 on Tris-Bis PAGE under reduced condition. The purity is greater than 95%.

SEC-HPLC

Assay Data



The purity of Mouse LYPD3 is greater than 95% as determined by SEC-HPLC.