

Cynomolgus LRG1 Protein

Cat. No. LRG-CM101



Description

Source	Recombinant Cynomolgus LRG1 Protein is expressed from HEK293 with His tag at the C-Terminus. It contains Val72-Gln383.
Accession	A0A2K5VVA4
Molecular Weight	The protein has a predicted MW of 35.69 kDa. Due to glycosylation, the protein migrates to 50-60 kDa based on Bis-Tris PAGE result.
Endotoxin	Less than 1EU per µg by the LAL method.
Purity	> 95% as determined by Bis-Tris PAGE > 95% as determined by HPLC

Formulation and Storage

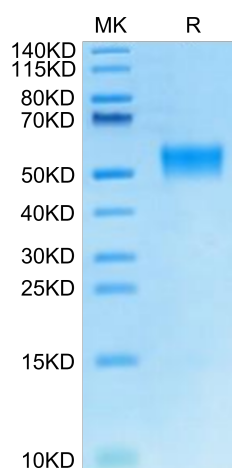
Formulation	Supplied as 0.22µm filtered solution in PBS (pH 7.4).
Storage	Valid for 12 months from date of receipt when stored at -80°C. Recommend to aliquot the protein into smaller quantities for optimal storage. Please minimize freeze-thaw cycles.

Background

Diabetic nephropathy (DN) is an important public health concern of increasing proportions and the leading cause of end-stage renal disease (ESRD) in diabetic patients. It is one of the most common long-term microvascular complications of diabetes mellitus that is characterized by proteinuria and glomerular structural changes. LRG1 is a novel pro-angiogenic factors involved in the abnormal angiogenesis and renal fibrosis in DN.

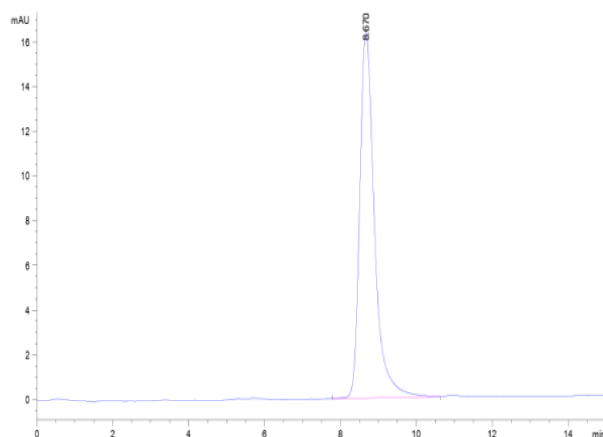
Assay Data

Bis-Tris PAGE



Cynomolgus LRG1 on Bis-Tris PAGE under reduced condition. The purity is greater than 95%.

SEC-HPLC



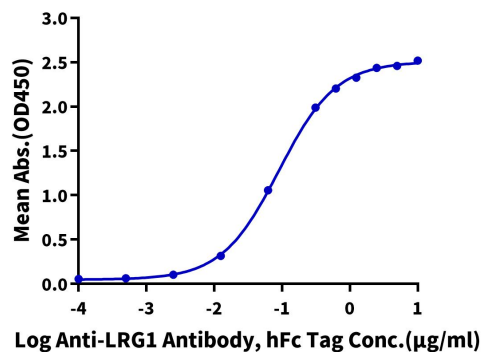
The purity of Cynomolgus LRG1 is greater than 95% as determined by SEC-HPLC.

Assay Data

ELISA Data

Cynomolgus LRG1, His Tag ELISA

0.5µg Cynomolgus LRG1, His Tag Per Well



Immobilized Cynomolgus LRG1, His Tag at 5µg/ml (100µl/well) on the plate. Dose response curve for Anti-LRG1 Antibody, hFc Tag with the EC50 of 90.1ng/ml determined by ELISA (QC Test).